

**SOCIAL STUDIES**

**(English Medium)**

**PART – A & B**

**Time: 3 Hours 15 Min**

**Class: 10<sup>th</sup> Maximum Marks:80**

**Instructions:-**

- 1) Read and understand the question paper.
- 2) Answer the questions under PART-A on separate answer booklet.
- 3) Attach the given outline maps of India, World with the answer booklet of Part-A.
- 4) Write the answer to the questions under Part-B on the question paper it self and attach it to the answer booklet of Part-A.
- 5) Answer the questions from the given Three sections I, II, III of Part-A.
- 6) Follow the instructions of every section.

**PART-A**

**Time: 2 hours 45 Minutes**

**Marks:60**

**Section-I**

6X2=12 Marks

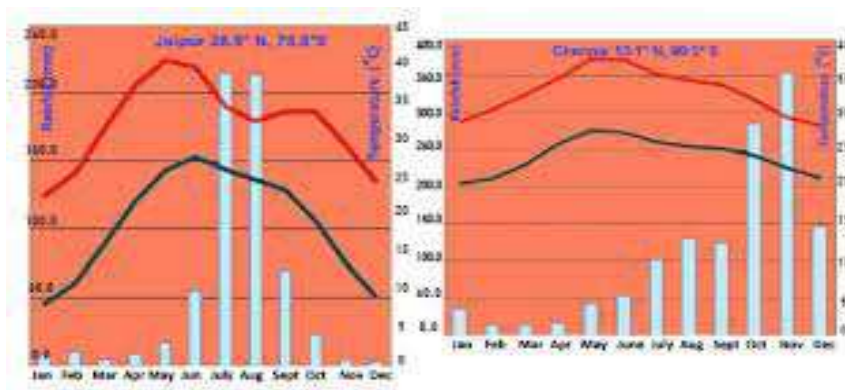
**Instructions:**

- i) This section contains Group-A and Group-B.
- ii) From each group choose any three answers from 6 questions.
- iii) Write the answers in one are two sentences.
- iv) Each question carries 2 Marks.

**GROUP-A**

- 1) Mention the major relief divisions of Indian land mass.
- 2) Give examples of the criterion for the measurement of human development.
- 3) Suggest to improve labour conditions in un organized sector.

Observe the following climograph and answer 4 and 5 questions.



- 4) Why is there a difference between the rainy season of Chennai and Jaipur?
- 5) In which month is the highest temperature recorded in jaipur?
- 6) Write two slogans on enlightening people regarding "environment protection?"

### **GROUP-B**

- 7) What was the immediate provocation for world war-1?
- 8) Write any features liked by you in Mahatma Gandhi?
- 9) Write the role of Dr. B.R. Ambedkar in preparing the draft Constitution of India?
- 10) If you have a right to vote, what are the qualities you like in the candidate you elect?
- 11) What are the result of the Green Revolution?
- 12) What are the situations that paved to strengthen the regional parties in present days?

### **SECTION-II**

4x4=16 (Marks)

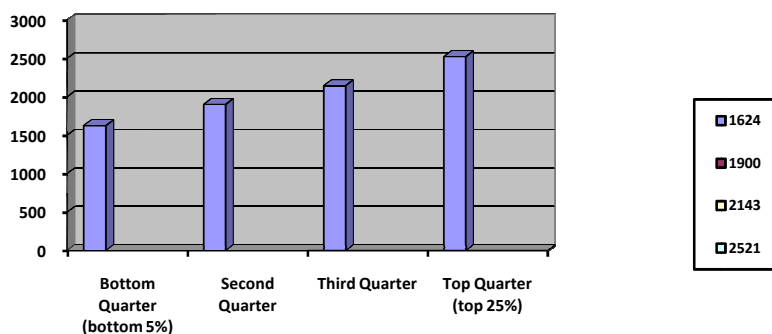
### **Instructions:**

- i) This section contains total 8 questions write any 4 questions.
- ii) Write the answers in 4-5 sentences.
- iii) Each question carries 4 Marks.

-----

- 13) Why do you think do parents accord less priority to girls education as compared to boys? Discuss in the class.
- 14) Explain the Himalayan river system?

15) Observe the bar diagram and answer the questions?



a) What percentage of people in rural India are consuming more calories than are required?

b) What is the reason for consuming less calories than are required in rural India?

16) Prepare a pamphlet on the importance of organic farming?

17) How did India National Army fight for Indian freedom? Explain

18) How can you say that right to vote plays a key role in democracy?

19) Draw the India map and locate the followings?

1) Kolkatha      2) Madras

20) Explain the effects along with the reasons for the emerging era of coalition politics.

### SECTION-III

4x8=32 (Marks)

#### Instructions:-

i) This section contains Group-A and Group-B.

ii) From each group choose any two answers from 4 questions.

iii) Write the answers in 8-10 sentences.

iv) Each question carries 8 marks.

21) Why are the Himalayas important to India?

22) Read the given paragraph and comment.

In many parts of the country girls education is still given less priority by the parents as compared to boys education while girls may study for a few years may not complete their schooling.

**23)** Read the following information and answer the given questions.

<b>Traditional Indian Seasons</b>		
Seasons	Months According to the Indian calendar	Months According to the western Gregorian Calendar
Vasantha	Chaithra-Vaishaka	March-April
Grishma	Jyestha-Ashadha	May-June
Varsha	Sraavana- Bhadra	July- August
Sharad	Aswayuja - Karthika	September - October
Hemantha	Margashira - Pushya	November - December
Shishira	Maga - Phyalguna	January - February

Season Vasantha starts from which month?

- How is the climate in the season of Grishma?
- Which is the starting month according to the Indian calendar?
- In which season leaves of trees falling?

**24)** Locate the following in the given map of India?

- Darjeeling
- The capital of Rajasthan
- Aravalis
- Punjab

### GROUP-B

**25)** Russian revolution brought in many changes in their society, what were they? And what challenges did they face?

**26)** Observe the following table and write a paragraph analyzing it

Rank in Total Emissions in 2011	Country	2011 Total carbondioxide emissions from the consumption of energy (million	Perceptacarbondioxide emissions from the consumption of energy (metrictions)

		metric tons)	
1	China	8715.31	652
2	USA	5490.63	17.62
3	Russia	1788.14	12.55
4	India	1725.76	1.45
11	UK	496.80	7.92
15	Indonesia	726.79	1.73

27) Read the following table and answer the following questions.

Table showing the parliamentary seat sharing of various political parties.

Sl. No.	Name of the party	Year 1952	Year 1962
1	Indian National congress	364	361
2	Communist party of India	16	29
3	Socialist party	12	12
4	Kisanmazdur part	09	.....
5	People Democratic Front	07	.....
6	Ganatantraparishad	06	.....
7	Others	38	27
8	Independents	37	20
9	Jana sangh	.....	18
10	Praja Socialist party	.....	12
11	DMK	.....	07

a) Which political parties got their majority in 1962 than in 1952?

b) Which political parties had disappeared till 1962?

c) Which political parties lost their seats in 1952 and in 1962?

d) Which political parties lost their majority in 1962 than in 1952?

28) Locate the following in the given map of world.

A) Vietnam

B) Hungary

C) Estonia

D) The USA

**PART-B**

**Time:- 30 Minutes**

**Marks:20**

**Note:-**

- 1) Answer all the questions.**
- 2) Each question carries 1 Mark**
- 3) Answer are to be written in the question paper only.**
- 4) Marks will not be awarded in case of over-written, rewritten or erased answers.**
- 5) Write the CAPITAL LETTERS (A, B, C, D) showing the correct answer for the following questions in the brackets provided against each question.**

1)mahabharat ranges are here. ( . )

- A) great Himalayas                      B) lesser Himalayas  
C) outer Himalayas                      D) aravallirange.

2) which one of the following does not match. ( . )

- A) rural labourers demand for better wages  
B) farmers depend on rains want sufficient rains.  
C) prosperous farmers want to settle in villages  
D) rich family girls want freedom

3) which one of the following is not in intermediate good? ( . )

- A) idli    B) paddy    C)Husk                      D) rice

4) the pre monsoons in Andhra Pradesh now known as..... ( . )

- A) coconut showers                      B) orange showers  
C) mango showers                      D) custard apple showers

5) hiware bazar was selected under theAdarsh gram yojana by the government of..... ( . )

- A) Maharashtra                      B) Karnataka  
C) Kerala                      D) Tamil Nadu

6) the stock of food grains mainly wheat and rice is procured by the the government through..... ( . )

- A) BCCI                      B) DCI                      C) FCI                      D) FCCI

- 7) Rachel Carson's 'Silent Spring' is a book. ( . )
- A) Narmada valley development project.  
B) Reducing environmental pollution.  
C) The effect of DDT on humans.  
D) Against the construction of Polavaram project.
- 8) The line which passes through India is given below. ( . )
- A) Tropic of Capricorn                      B) Tropic of Cancer  
C) Subtropical line                      D) Equator
- 9) The following is not a Himalayan River. ( . )
- A) Ganga.      B) Sindhu. C) Brahmaputra. D) Mahanadi.
- 10) The economy sector is mainly divided into..... ( . )
- A) 2      B) 3      C) 4      D) 5.
- 11) The following one was not the cause of World War I. ( . )
- A) Militarism                      B) Complete domination of Germany.  
C) Secret alliance.      D) Declaration of independence to all countries.
- 12) It is established that the purpose of the League of Nations. ( . )
- A) United Nations Organization      B) World Bank  
C) Capitalist group.                      D) Socialist group.
- 13) Royal Indian Navy rebellion was started in..... ( . )
- A) 1943      B) 1945                      C) 1942                      D) 1946
- 14) In March 1947 the Viceroy of India was. ( . )
- A) Wavell                      B) Chelmsford  
C) Marley                      D) Mountbatten
- 15) The words 'secular' and 'socialist' are included in. ( . )
- A) Schedules                      B) Parts  
C) Preamble                      D) Fundamental rights

16) the constitution of India was prepared and adapted by the.....

(. )

A) legislative.

B) judiciary.

C) constituent assembly.

D) executive.

17) who conduct the elections in India?

(. )

A) judiciary

B) parliament

C) CID

D) election commission

18) the article of the constitution which says that the elections in India shall be held on the basis of adult suffrage is.

(. )

A) 326

B) 395

C) 443

D) 17

19) the first CM of Andhra Pradesh.

(. )

A) B. Ramakrishna Rao

B) T. prakasam

C) M.chenna Reddy

D) none of the above

20) the moment that developed the idea of sustainable development is.

(. )

A) green peace movement

B) chipko movement

C) Meirapaibi moment

D) Narmada bachao movement