

X CLASS BIOLOGY MODEL PAPER IN

ENGLISH MEDIUM.

SECTION -1

A) Answer The Following Questions

EACH QUESTION CARRIES ½ MARK.

- 1) Expand HIV.
- 2) What is meant by ESRD?
- 3) Write the parts of chloroplast.
- 4) When compare with other animals which part is very important in our body?
- 5) Name the blood purifying part
- 6) Which part is taken as example for homologous evidence in the following animals.
a) Man b) Cheetah c) whale d) bat
- 7) Define the term cardiac cycle.
- 8) What is meant by allele?
- 9) In which place does cow stand in the following food chain?
a) producer b) primary consumer c) secondary consumer
- 10) Give an example for alkaloid.
- 11) Which air is warm while we are breath?
- 12) Dams: -----: Rivers: renewable resources.

Section-2

- 13) what is the pigment in photosynthesis and where is it located?
- 14) define the term breathing.
- 15) Which tissue helps in transporting nutrients in plants?
- 16) Write the stages of cell cycle.
- 17) synapses is connecting junction of two neurons. Is it correct, if it is correct explain it?
- 18) What is meant by fertilization? Write the types in it.
- 19) Write the causes for Global warming.

20) Write any two uses of L.P.G

Section-3

21) Draw a neat labelled diagram of Mitochondria

22) Write the differences between veins and arteries.

23) What is the reason for Mendel chosen pea plant for his experiments?

24) What is root pressure? Write its role in plants.

25) Name the different types of teeth in our mouth and write the dental formula.

26) write about testis in man.

27) write any four examples for renewable resources.

28) Write any four operators in the following diagram.

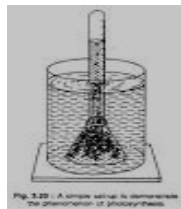


Fig. 3.23 A simple water pump to demonstrate the phenomenon of siphoning/pressure

Section -4

29) Explain the Light reaction.

Or

Write the differences between photosynthesis and respiration.

30) By observing the following experiment write the answers for the questions below the diagram

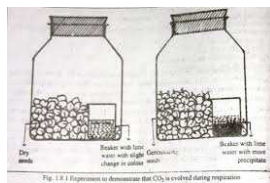


Fig. 1.1.1 Experiment to demonstrate that CO₂ is evolved during respiration

a) What is the aim of this experiment?

b) Write the operators using in this experiment

c) Write the observation.

d) Which substance changes its colour?

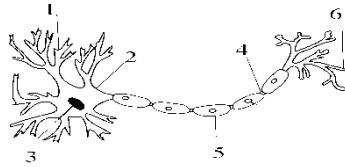
Or

Write the aim and procedure in the experiment that Action of saliva on flour.

31) Draw a neat labelled diagram of LS of kidney and write important parts in it.

Or

Labelle the following diagram and write about cell body.

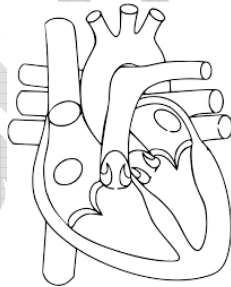


32)fill the following the table with proper words.

producers	primary consumers	secondary consumers
grass		tiger
Carrot	rabbit	
	goat	wolf
grians		Cat

Or

Write any four sentences about the following diagram



33)What type of questions do you ask nephrologist to know more about kidneys.

Or

Write about the blood clotting in human beings.