

www.sakshieducation.com
SUMMATIVE ASSESSMENT
BIOLOGICAL SCIENCE-PAPER-3

(English Medium)
(Max.Marks:50)

Class: X

Time: 2.45 Hrs.

Introductions:

1. This questions paper contains only ONE part.
2. 15 minutes are allotted for reading the question paper in additions to 2.30 hours for writing the answers.
3. All answers should be written in the separate answer Booklet.
4. There are four sections in the questions.
5. There is internal choice in section-IV
6. Write answers neat and legible.

SECTION-I

12 X ½ =6 m

- NOTE:
- 1) Answer all questions
 - 2) Each question carries ½ Marks.

1. Expand A.T.P
2. Observe the following chart and complete the box.
3. Name of the scientist with the help of this paragraph.
In 1661, four years after Harvey's death. He studies the wings of bats. He could see that blood vessels in their thin membrane and under the microscope. He could see that the smallest arteries and veins connected by very fine Blood vessels.
4. Identify the mismatched pair
 1. Fossils - Embryology
 2. HMS Beagle - Lamarck
 3. Population theory - A.R. Mathus
5. Can you name the response shown by tendrils in the below figure?
6. Name the Scientist with the help of this paragraph. He tested the theory of inheritance of acquired characters on rats. He proved that the bodily changes are not inherited.
7. Answer 10, 11 questions with the help of the paragraph. In our body blood carries oxygen to tissues different parts of the body in colour due to the presence of (10), it contain(11) element in it. Give an examples for connecting link between reptiles and aves.

8. Answer 10,11 questions with the help of the paragraph. In our body blood carries Oxygen to tissues different parts of the body. It is red in colour due to the presence of (1 It containing (11). Element in it.
9. Name the plant that is used in waste land plantation to make the soil nitrogen rich.
10. Name the gland that secrete testosterone hormone
11. Name the vitamin that causes night blindness.
12. Expand U.N.D.P.

SECTION-II

8x1=8 m

- NOTE:
- 1) Answer all questions
 - 2) Each question carries 1 Marks.

13. Which blood vessels carries blood for oxidation?
14. The drunken man does not walk properly, which part of the brain might have not functioning properly?
15. What is the apparatus used in your class, while performing the demonstration of peristaltic movements in Oesophagus?
16. What happens if decomposers are removed from the food web?
17. Sunny said, human being is an internal combustion machine?
18. Write two slogans to popularize the awareness on "Organ Donation".
19. Suggest any two practices, suitable to farmers with less water resources.
20. "We can't imagine the world without insects and birds". Suggest two methods to conserve them.

SECTION-III

8x2=16 m

- NOTE:
- 1) Answer all questions
 - 2) Each question carries 2 Marks.

21. Why do we use fossil fuels judiciously?
22. How does the embryological evidences support that evolution has takes places?
23. Write two precautions you take while observing Rhyzopus in the Laboratory?

24. Abhijith participated in a 100 mtr. Running race get more muscle pains. But the sports man who participates in 5 KMs race get less muscle pains, What is the reasons?
25. What are the benefits of water harvesting?
26. Give a reason to explain why adrenaline helps in dealing emergency situation.
- 27.

Sl.No.	Type of food	End products
O1	Carbohydrates	Glucose
O2	ProteinS	Amino-acids
O3	Fats	Fatty acids and

28. What is fluorosis? How does it affect the body?

SECTION-IV

5x4=20 m

- NOTE:
- 1) Answer all questions
 - 2) Answer any following one from internal choice of each questions.
 - 3) Each questions carries 4 Marks

29. What is malnutrition ? Explain some nutrition deficiency diseases

(or)

One student (researcher) wants to cross pure tall plant (TT) with pure dwart (it) plant, what would be the F₁ and F₂ generation? Explain?

30. How is using of toric materials affecting the ecosystem? Write a short note on bioaccumulation and bio Maynifications.

(or)

Double fertilization is wonderful phenomenon in flowering plants. Explain double fertilization in flowering plant with the help of a diagram.

31. John prepared stethoscope with paper cup and plastic tube. Write down the procedure of preparations.

(or)

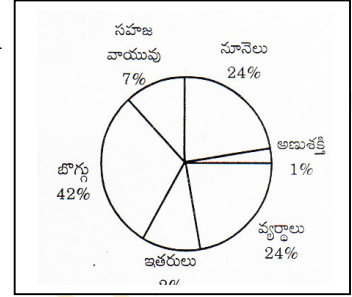
Study the graph and answer the following questions. Graph showing effects of vigorous exercise on the concentration of lactic acid in blood.

- i) What was the concentration of lactic acid in blood to start with
- ii) What was the greatest concentration of lactic acid reached during the experiments?
- iii) What is the concentration of lactic acid after 25 minutes of exercise?

32. Observe the pie diagram and answer the following questions.

(165-166)

- i) Identify the fossil fuels from the above diagram
- ii) Why wastes should be considered as primary energy sources in future?
- iii) Why can't we depend on fossil fuels forever?
- iv) What are the alternatives for Fossil fuels?



(or)

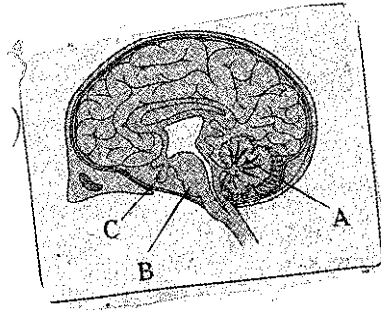
Study the given paragraph and fill the table with the given information.

In the heart, superior vena cava and inferior vena cava opened into right atrium. The pulmonary veins bring blood from the lungs and open into left atrium. The valve present between the right atrium and right ventricle is referred as 'Tricuspid valve'. The valve present between the left atrium and left Ventricle is Pulmonary. Aorta are called systemic values.

Name of the value	Location	Way of blood blow	Nature of the blood Oxygenated deoxgenated
a. Tricuspid value			
b. Bicuspid value			
c. Pulmonry value			
d. Systemic values			

33. Draw the labeled diagram of human digestive system. List our the parts where perisfasis take places.

(Or)



Observe the below diagram and answer the

- i) This diagram belongs to which system of the body?
- ii) Name the parts A and B
- iii) The part 'C' is an endocrine gland. This is called the master gland. What is the name of this gland?
- iv) Which parts in this diagram are useful to solve problems and puzzles?

The end