

# SBI Associate Banks Clerical Exam

Held on 14.10.2012

Based on Memory

## Test I

### GENERAL AWARENESS

1. Which of the following games is NOT included in Olympic games?
  - 1) Football
  - 2) Golf
  - 3) Badminton
  - 4) Hockey
  - 5) Table Tennis
2. 'PVR' is the name of a leading
  - 1) Retail Store Chain
  - 2) Trousers Brand
  - 3) Fast Food Restaurant
  - 4) Casual Footwear Chain
  - 5) Multiplex Chain Operator
3. Who amongst the following is the Solicitor General of India at present?
  - 1) Rohinton Nariman
  - 2) Harish Salve
  - 3) Abhisekh Manu Singhvi
  - 4) Ram Jethmalani
  - 5) None of these
4. The Finance Bill 2012-13 gave the Income Tax Department powers to revive its ₹ 11,128 crore tax demand on
  - 1) Bharti Airtel
  - 2) Tata Indicom
  - 3) Idea Cellular
  - 4) Vodafone
  - 5) Dolphin
5. Which of the following awards is given only to individuals and organisations of Asian countries for excellence in their respective fields?
  - 1) Booker Prize
  - 2) Nobel Prize
  - 3) Templeton Prize
  - 4) Ramon Magsaysay Award
  - 5) Oscar Awards
6. Who amongst the following is the founder of Facebook?
  - 1) Steve Jobs
  - 2) Steve James
  - 3) Sabeer Bhatia
  - 4) Mark Zuckerberg
  - 5) Bill Gates
7. Which is the top gold-producing country in the world?
  - 1) Saudi Arabia
  - 2) China
  - 3) Singapore
  - 4) Kuwait
  - 5) India
8. Which Indian city is known as the 'Garden City'?
  - 1) Udaipur
  - 2) Chandigarh
  - 3) Srinagar
  - 4) Bangalore
  - 5) Mysore
9. Who among the following Indian contestants in the 2012 London Olympics 10-metre air rifle event won a bronze medal?
  - 1) Gagan Narang
  - 2) Vijay Kumar
  - 3) Sushil Kumar
  - 4) Parupali Kashyap
  - 5) Amit Kumar
10. Which of the following is a professional group for Twenty 20 Cricket Championship, initiated by the Board of Control for Cricket in India?
  - 1) Indian Cricket League (ICL)
  - 2) International Cricket League (ICL)
  - 3) Indian Premier League (IPL)
  - 4) Cricket Club of India (CCI)
  - 5) Indian Premium League (IPL)
11. Who amongst the following is the author of the English novel *The White Tiger*?
  - 1) Kiran Desai
  - 2) VS Naipaul
  - 3) Shashi Tharoor
  - 4) Shobhaa De
  - 5) Aravind Adiga
12. Manesar, which has been recently in news, is a town in
  - 1) Himachal Pradesh
  - 2) Punjab
  - 3) Haryana
  - 4) Gujarat
  - 5) Uttarakhand
13. Who is the author of the book *Fifty Shades of Grey*?
  - 1) Jeffrey Archer
  - 2) Norman Lewis
  - 3) EL James
  - 4) Edward Klein
  - 5) Shashi Deshpande
14. Rockefeller Foundation has recently conferred a lifetime achievement award for innovation into business models upon
  - 1) Anil Dhirubhai Ambani
  - 2) Barack Obama

- 3) General VK Singh  
4) Narendra Modi  
5) Ratan N Tata
15. Under the RTI Act, the time for disposal of request for information in cases concerning life and liberty is  
1) 30 days                      2) 15 days  
3) 10 days                      4) 7 days  
5) 48 hours
16. Which of the following awards has recently been conferred upon Shri DR Mehta for outstanding contribution towards the promotion of communal harmony, peace and goodwill?  
1) Rajiv Gandhi Global Excellence Award 2012  
2) Rajiv Gandhi Memorial National Award 2012  
3) Rajiv Gandhi Quality Award 2012  
4) Rajiv Gandhi National Sadbhavana Award 2012  
5) Rajiv Gandhi Khel Ratna Award 2012
17. United States Atomic Energy Act 1954 establishes an agreement of cooperation as a prerequisite for nuclear deals between US and any other nation. Such an agreement is popularly known as  
1) Agreement of Cooperation  
2) '123' Agreement  
3) PL480  
4) A to Z Agreement  
5) Nuclear Deal
18. Which of the following sportsmen has recently clinched the French Open singles title for the seventh time in his life time?  
1) Roger Federer              2) Rafeal Nadal  
3) Novak Djokovic            4) Robin Soderling  
5) Martin Verkerk
19. World 'No Tobacco Day' is observed every year on  
1) 31st January                2) 31st May  
3) 31st July                      4) 31st October  
5) 31st December
20. Which of the following is the name of a Chinese spacecraft?  
1) Apollo 18                      2) Soyuz 7K-L1  
3) Shenzhou-9                  4) Kliper  
5) Hermes
21. Commonwealth Games 2014 will be held in  
1) Glasgow                      2) Montreal  
3) Queensland                  4) Gold Coast  
5) Beijing
22. Which of the following is NOT a Consumer Right as per the Consumer Protection Act 1986?  
1) Right to consumer education  
2) Right to seek redressal  
3) Right to safety  
4) Right to be informed  
5) Right to negotiate
23. Which of the following is a book authored by Shri Pranab Mukherji?  
1) *The Inheritance of Loss*  
2) *The Argumentative Indian*  
3) *Beyond Survival: Emerging Dimensions of Indian Economy*  
4) *The Family and the Nation*  
5) None of these
24. For the management of natural resources, the Indian Space Research Organisation (ISRO) has successfully operationalised  
1) Indian Remote Sensing Satellite (IRS)  
2) Indian National Satellite (INSAT)  
3) Geostationary Satellite Launch Vehicle (GSLV)  
4) Polar Satellite Launch Vehicle (PSLV)  
5) None of these
25. Which of the following is a power-generating company?  
1) Reliance                      2) Hindalco  
3) Tisco                          4) HPCL  
5) Cipla
26. Which of the following Indian states has topped as the fastest growing state with a striking 13.1% growth in 2011-12?  
1) Gujarat                      2) Haryana  
3) Maharashtra                  4) Tamil Nadu  
5) Bihar
27. Which of the following is NOT a public sector bank?  
1) Corporation Bank  
2) United Bank of India  
3) Vijaya Bank  
4) Bank of Maharashtra  
5) Federal Bank
28. A form of intentional weather modification by trying to change the amount or type of precipitation that falls from clouds by dispersing substances into air that serve as cloud condensation, is called  
1) Cloud Computing  
2) Cloud Technology  
3) Cloud Seeding

- 4) Cloud Control  
5) Cloud Engineering
29. Who amongst the following cricketers has been chosen as the 'Event Ambassador' by the International Cricket Council (ICC) for the World Cup Twenty20 Championship to be held in September-October 2012?
- 1) Lasith Malinga  
2) Mahela Jayawardene  
3) TM Dilshan  
4) Sachin Tendulkar  
5) Dinesh Chandimal
30. Which of the following birds has been declared as the 'State Bird' by the Government of Delhi State?
- 1) Parrot                      2) Pigeon  
3) House Sparrow        4) Peacock  
5) Swan
31. 'CHALLENGER' is the name of a
- 1) planet                      2) nuclear weapon  
3) island                      4) space shuttle  
5) automobile brand
32. Which of the following is India's largest trading partner in the world?
- 1) UAE                      2) China  
3) USA                      4) France  
5) Italy
33. The North Atlantic Treaty Organisation (NATO) is headquartered at
- 1) Brussels  
2) Geneva  
3) New York  
4) Sweden  
5) Camp David, Maryland USA
34. Which of the following is the abbreviated name of a rural sports initiative introduced by the Government of India to promote youth and social development through sports?
- 1) NLMP                      2) PYKKA  
3) CGHS                      4) AABY  
5) SGSRY
35. Who amongst the following persons is the former Governor of RBI?
- 1) Shri P Chidambaram  
2) Shri Yashwant Sinha  
3) Shri Pranab Mukherjee  
4) Shri Manmohan Singh  
5) None of these
36. A new scheme has been announced in the Budget 2012-13 giving tax exemptions to first-

time equity market investors. The scheme is titled as

- 1) Rajiv Gandhi Equity Savings Scheme  
2) Rashtriya Equity Savings Scheme  
3) National Equity Savings Scheme  
4) Indira Gandhi Equity Savings Scheme  
5) Prime Minister's Equity Savings Scheme
37. Which of the following countries is expected to become the world's second largest producer of crude steel by 2015?
- 1) China                      2) Brazil  
3) Russia                      4) India  
5) Italy
38. Which of the following Asian countries announced a scheme for dual citizenship on May 16, 2012?
- 1) Bhutan                      2) Bangladesh  
3) Sri Lanka                      4) Nepal  
5) Myanmar
39. Who amongst the following has recently been appointed as the Chairman of Telecom Regulatory Authority of India?
- 1) VS Sampath                      2) Rahul Khullar  
3) Sanjay Arya                      4) DK Mittal  
5) Navin Chawla
40. The Central Board of Direct Taxes has made e-filing of income tax returns mandatory for all assesses whose annual earnings exceed
- 1) ₹ 5 lakh during the fiscal  
2) ₹ 10 lakh during the fiscal  
3) ₹ 15 lakh during the fiscal  
4) ₹ 20 lakh during the fiscal  
5) ₹ 25 lakh during the fiscal

## Test-II

### ENGLISH LANGUAGE

**Directions (Q. 41-45):** Read each sentence to find out whether there is any grammatical or idiomatic error in it. The error, if any, will be in one part of the sentence. The number of that part is the answer. If there is no error, the answer is (5), ie 'No error'. (Ignore errors of punctuations, if any.)

41. 1) Reshma was /2) a daily wage worker /3) who gone to work /4) despite having high fever. /5) No Error

42. 1) Radhika was very upset /2) because she had to go /3) to a boarding school; /4) so she cried the entire night. /5) No Error

43. 1) Although Shanku was born /2) in a rich merchant's families, /3) he was very humble and /4) was a philanthropist by nature. /5) No Error

44. 1) Professor Shastri were /2) a loved man and /3) had students visiting /4) him every day. /5) No Error

45. 1) Reetu was a model /2) and so she would /3) starve herself to maintain /4) his body weight. /5) No Error

**Directions (Q. 46-50): Each sentence below has a blank; each blank indicates that something has been omitted. Choose the word that best fits the meaning of the sentence as a whole.**

46. Rajeev was upset because he \_\_\_\_\_ forgotten his best friend's birthday.

- 1) have                      2) shall  
3) will                      4) might  
5) had

47. Raj was \_\_\_\_\_ introvert and would prefer to sit in the library rather than go out with friends.

- 1) the                      2) a  
3) like                      4) for  
5) an

48. Shanku was born \_\_\_\_\_ a silver spoon in his mouth and was proud of his wealth.

- 1) with                      2) along  
3) on                      4) within  
5) wishing

49. Laxmi lost an important file and rather than confessing her \_\_\_\_\_ she blamed Sandra for losing it.

- 1) respect                      2) image  
3) attitude                      4) default  
5) mistake

50. Jacob was a rich man who lived \_\_\_\_\_ alone in a huge house because his children did not care about him.

- 1) only                      2) all  
3) more                      4) too  
5) little

**Directions (Q. 51-55): In each question below, four words printed in bold type are given. These are numbered (1), (2), (3) and (4). One of these words printed in bold might either be wrongly spelt or inappropriate in the context of the sentence. Find out the word that is**

**inappropriate or wrongly spelt, if any. The number of the word is your answer. If the words printed in bold are correctly spelt and appropriate in the context of the sentence then mark (5), ie 'All Correct', as your answer.**

51. Ronald was very **proud** of his new car and would  
1)

**always** be on the lookout for an **excuse** to **flaunt** it.

- 2)                                      3)                      4)

All correct

5)

52. Ramesh had an **aversion** to alcohol and **would**

- 1)                                      2)

avoid going to **partyes** with his **friends**. All correct

- 3)                                      4)                      5)

53. Lucy was **working** overtime **because** she had to

- 1)                                      2)

**prepare** for an important **meeting**. All correct

- 3)                                      4)                      5)

54. Roshni was **found** of pets and she was a **proud**

- 1)                                      2)

owner of many **unique animals**. All correct

- 3)                      4)                      5)

55. Ahmad was not only very **intelligent** but also very

1)

**sincere** and would always **strand** first in his **class**.

- 2)                                      3)                      4)

All correct

5)

**Directions (Q. 56-60): Rearrange the following eight sentences/groups of sentences A), B), C), D), E), F), G) and H) in the proper sequence to form a meaningful paragraph; then answer the questions given below them.**

A) Both Ram and Sham realised their mistakes and were ashamed about what they had said.

B) Vivek happened to overhear their conversation and was very angry with both of them for criticising the tree.

C) Two friends, Ram and Sham, were seeking respite from the searing heat of the midday sun when they saw a huge leafy tree.

D) "It's a plain tree," said his friend. "Don't waste your time looking for fruits. It produces neither edible fruits nor good wood. It's one of the most useless trees around."

One day, a flea drifted into the king's bedroom and flew straight into the king's bed. The bed bug immediately scolded the intruder and told

The flea was very impatient, however, and could not (67) himself. Just as the king was beginning to doze off, he bit the king hard on his arm. The king (68) from his bed when he felt the bite, and was very cross indeed. He immediately ordered his servants to strip his bed and find the insect that had caused him such (69). The king's men pulled the linen off the bed and examined it closely. The flea, seeing the commotion, flew away to a corner of the room and hid behind a curtain, but the servants found the poor bed bug and killed him at (70).

- 
- 5



67. 1) stopped 2) restraint  
3) helped 4) control  
5) instruct
68. 1) leapt 2) lifted  
3) slept 4) removed  
5) jump
69. 1) depression 2) wait  
3) discomfort 4) joy  
5) paining
70. 1) best 2) immediate  
3) all 4) end  
5) once

**Directions (Q. 71-80): Read the following passage carefully and answer the questions given below it. Certain words/phrases have been printed in bold to help you locate them while answering some of the questions.**

Long ago, a Brahmin called Haridatta lived in a little village. He was a farmer but the piece of land he cultivated provided him with so little to survive on that he was very poor.

One day, unable to stand the heat of the summer sun, he went to rest for a while under a big tree on his land. Before he could **stretch out** on the ground, he saw a huge black cobra slithering out of an ant hill nearby. The snake then spread his head and swayed gracefully from side to side. Haridatta was **astonished** to see this and he thought, "This cobra must really be the god of this land. I have never seen or worshipped him before, which is probably why I am not able to get anything from the land. From this day onwards, I will worship him." He hurried back to his home at once and returned with a glass full of milk. He poured it into a bowl and turning to the ant hill said, "O ruler of the land, I did not know you were living in this ant hill. That is why I have not paid my tribute to you. Please accept my apologies for this omission and accept this **humble** offering." He then placed the bowl of milk at the entrance of the ant hill and left the place.

The next day when the Brahmin arrived to work on his land before the sun rose, he found a gold coin in the bowl he had left at the ant hill. He was very happy indeed and from that day on, he made it a practice to offer the cobra milk in a bowl each day. The next morning he would collect a gold coin and leave.

One day Haridatta had to go to a neighbouring village on business. He asked his son to go to the ant hill as usual and leave a bowl of milk for the cobra. The son did as he

was told, but when he went to the same spot the next day and collected the gold coin he thought, "This ant hill must be full of gold. If I kill the cobra, I can collect all the gold **in an instant**, instead of having to waste my time coming here every day." He then struck the cobra with a big stick. The cobra **deftly** dodged the bow but bit Haridatta's son with his poisonous fangs. The boy soon died. When Haridatta returned to his village the next day, he heard how his son had met his death. He realised at once that his son's greed would probably have caused him to attack the cobra.

The Brahmin went to the ant hill the day after his son's cremation and offered milk to the cobra as usual. This time, the cobra did not even come out of his hole. Instead, he called out to Haridatta, "You have come here for gold, forgetting that you have just lost a precious son and that you are in mourning. The reason for this is pure greed. From today, there is no meaning to our relationship. I am going to give you a diamond as a final gift. But please don't ever come back again." He slithered away as the Brahmin watched.

71. Which of the following is TRUE according to the story?
- 1) Haridatta had asked his son to give milk to the cobra because he himself was tired of doing it.
  - 2) The cobra gave Haridatta a diamond every day.
  - 3) Haridatta's son was greedy.
  - 4) Haridatta had no idea as to why the cobra had killed his son.
  - 5) All are true
72. What was the cobra's final gift to the Brahmin?
- 1) Venom 2) A diamond
  - 3) A bite 4) A gold coin
  - 5) None of these
73. What did Haridatta think on seeing the cobra for the first time?
- 1) The cobra was divine and he would get gold coins from it if worshipped.
  - 2) The cobra was the god of his land and had to be worshipped
  - 3) He was fearful of the cobra and ran away from the spot.
  - 4) The cobra was responsible for his poverty.
  - 5) None of these
74. Which of the following is possibly the most appropriate title for the story?

- 1) The Cobra And the Brahmin
  - 2) The Foolish Brahmin
  - 3) The Brave Cobra
  - 4) Haridatta And His Son
  - 5) The Mourning Father
75. Why did Haridatta's son try to kill the cobra?
- 1) The cobra had angered him through his behaviour.
  - 2) The cobra was known to be poisonous and had killed several men in the village by biting them.
  - 3) He believed that the ant hill in which the cobra lived contained all the gold coins.
  - 4) He thought the cobra would bite him if he went near it.
  - 5) He did not like the fact that his father was wasting his time by feeding the cobra milk every day.
- Directions (Q. 76-78): Choose the word/group of words which is most similar in meaning to the word/group of words printed in bold as used in the passage.**
76. **HUMBLE**
- 1) rich
  - 2) waste
  - 3) meek
  - 4) modest
  - 5) low
77. **ASTONISHED**
- 1) petrified
  - 2) upset
  - 3) dazed
  - 4) fearful
  - 5) surprised
78. **STRETCH OUT**
- 1) lie down
  - 2) exercise
  - 3) fall
  - 4) elongate
  - 5) extend out
- Directions (Q. 79-80): Choose the word/group of words which is most opposite in meaning to the word/group of words printed in bold as used in the passage.**
79. **DEFILY**
- 1) nimbly
  - 2) artistically
  - 3) skilfully
  - 4) shallowly
  - 5) sluggishly
80. **IN AN INSTANT**
- 1) in lieu of
  - 2) quickly
  - 3) at once
  - 4) one each day
  - 5) speedily

### Test-III

## QUANTITATIVE APTITUDE

**Directions (Q. 81-85): What approximate value should come in place of question mark (?) in the following questions? (NOTE : You are not expected to calculate the exact value.)**

81.  $1504 \times 5.865 - 24.091 = ?$
- 1) 7200
  - 2) 9500
  - 3) 6950
  - 4) 5480
  - 5) 8800
82.  $16.928 + 24.7582 \div 5.015 = ?$
- 1) 35
  - 2) 40
  - 3) 22
  - 4) 12
  - 5) 45
83.  $\sqrt[3]{7.938} \times (6.120)^2 - 4.9256 = ?$
- 1) 70
  - 2) 55
  - 3) 30
  - 4) 25
  - 5) 90
84.  $16.046 \div 2.8 \times 0.599 = ?$
- 1) 3.5
  - 2) 7.9
  - 3) 1.9
  - 4) 5.6
  - 5) 6.2
85.  $\sqrt{963} + (4.895)^2 - 9.24 = ?$
- 1) 60
  - 2) 35
  - 3) 85
  - 4) 45
  - 5) 25
- Directions (Q. 86-100): What should come in place of question mark (?) in the following questions?**
86.  $(12 \times 19) + (13 \times 8) = (15 \times 14) + ?$
- 1) 124
  - 2) 122
  - 3) 126
  - 4) 128
  - 5) None of these
87.  $\sqrt{65 \times 12 - 50 + 54} = ?$
- 1)  $\sqrt{28}$
  - 2)  $28^2$
  - 3) 28
  - 4) 784
  - 5) None of these
88.  $15\% \text{ of } 524 - 2\% \text{ of } 985 + ? = 20\% \text{ of } 423$
- 1) 25.9
  - 2) 27.7
  - 3) 25.7
  - 4) 24.9
  - 5) None of these

89.  $152 \times 8 + (228 \div 19)^2 = ?$

- 1) 1360                      2) 1354  
3) 1368                      4) 1381  
5) None of these

90.  $\sqrt{1521} + \sqrt{225} = ?$

- 1) 56                          2) 58  
3) 54                          4) 62  
5) None of these

91.  $38.734 + 8.638 - 5.19 = ?$

- 1) 41.971                      2) 42.179  
3) 43.072                      4) 42.182  
5) None of these

92.  $7^{8.9} \div (343)^{1.7} \times (49)^{4.8} = 7^?$

- 1) 13.4                          2) 12.8  
3) 11.4                          4) 9.6  
5) None of these

93.  $\sqrt[3]{512} \div \sqrt[4]{16} + \sqrt{576} = ?$

- 1) 24                              2) 31  
3) 22                              4) 18  
5) None of these

94.  $(42 \times 3.2) \div (16 \times 1.5) = ?$

- 1) 5.9                              2) 5.6  
3) 6.1                              4) 4.8  
5) None of these

95.  $199 + 5^3 \div 4 \times 4^2 = ?$

- 1) 969                              2) 655  
3) 966                              4) 799  
5) None of these

96.  $342 \div 6 \times 28 = 1099 + ?$

- 1) 478                              2) 502  
3) 486                              4) 504  
5) None of these

97.  $\frac{9.8 \times 2.5 \times 7.6}{0.5} = ?$

- 1) 384.2                          2) 379.5  
3) 364.3                          4) 372.4  
5) None of these

98.  $\frac{3}{5}$  of  $\frac{2}{7}$  of  $? = 426$

- 1) 2490                          2) 2565  
3) 2475                          4) 2485  
5) None of these

99.  $3\frac{2}{5} + 1\frac{2}{9} = 4\frac{4}{5} - ?$

1)  $\frac{8}{45}$                               2)  $\frac{7}{47}$

3)  $\frac{7}{45}$                               4)  $\frac{8}{51}$

- 5) None of these

100.  $\frac{13}{63} \div \frac{104}{14} \times \frac{52}{19} = ?$

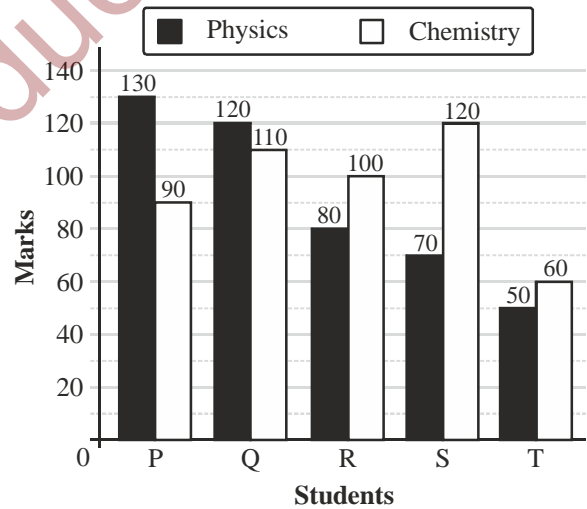
1)  $\frac{12}{173}$                               2)  $\frac{13}{171}$

3)  $\frac{17}{171}$                               4)  $\frac{18}{171}$

- 5) None of these

**Directions (Q. 101-105): Study the following bar graph carefully to answer the questions.**

**Marks obtained by five students in Physics and Chemistry**



101. The marks obtained by S in Chemistry is what per cent of the total marks obtained by all the students in Chemistry?

- 1) 25                                  2) 28.5  
3) 35                                  4) 31.5  
5) 22

102. If the marks obtained by T in Physics were increased by 14% of the original marks, what would be his new approximate percentage in Physics if the maximum marks in Physics were 140?

- 1) 57                                  2) 32  
3) 38                                  4) 48  
5) 41



103. Fill in the blank space in order to make the sentence correct as per the given information. The total marks obtained by T in both the subjects together is more than the marks obtained by \_\_\_\_\_.  
 1) Q in Chemistry  
 2) R in Physics  
 3) S in Chemistry  
 4) P in Physics  
 5) R in both the subjects together
104. What is the ratio of the total marks obtained by P in Physics and Chemistry together to the total marks obtained by T in Physics and Chemistry together?  
 1) 3 : 2  
 2) 4 : 3  
 3) 5 : 3  
 4) 2 : 1  
 5) None of these
105. What is the ratio of the total marks obtained by Q and S together in Chemistry to the total marks obtained by P and R together in Physics?  
 1) 23 : 25  
 2) 23 : 21  
 3) 17 : 19  
 4) 17 : 23  
 5) None of these
106. Meera purchased 23 bracelets at the rate of ₹160 per bracelet. At what rate per bracelet should she sell the bracelets so that the profit earned is 15%?  
 1) ₹184  
 2) ₹186  
 3) ₹192  
 4) ₹198  
 5) None of these
107. Kajal spends 55% of her monthly income on grocery, clothes and education in the ratio 4 : 2 : 5. If the amount spent on clothes is ₹5540, what is Kajal's monthly income (in ₹)?  
 1) ₹55400  
 2) ₹54500  
 3) ₹55450  
 4) ₹55650  
 5) None of these
108. 35 per cent of a number is two times 75 per cent of another number. What is the ratio of the first number to the second?  
 1) 35 : 6  
 2) 31 : 7  
 3) 23 : 7  
 4) 32 : 9  
 5) None of these
109. The area of a rectangular field is 3584 m<sup>2</sup> and its length and breadth are in the ratio 7 : 2. What is the perimeter of the field?  
 1) 246m  
 2) 292m  
 3) 286m  
 4) 288m  
 5) None of these
110. Last year there were 610 boys in a school. The number decreased by 20 per cent this year. How many girls are there in the school if the number of girls is 175 per cent of the total number of boys in the school this year?  
 1) 854  
 2) 848  
 3) 798  
 4) 782  
 5) None of these
111. Aryan got 350 marks and Vidya scored 76 per cent marks in the same test. If Vidya scored 296 marks more than Aryan, what was the maximum marks in the test?  
 1) 650  
 2) 900  
 3) 850  
 4) 950  
 5) None of these
112. A student was awarded certain marks in an examination. However, after re-evaluation, his marks were reduced by 40% of the marks that were originally awarded to him so that the new score now became 96. How many marks did the student lose after re-evaluation?  
 1) 58  
 2) 68  
 3) 63  
 4) 56  
 5) 64
113. 855 candidates applied for a job, out of which 80% were rejected. How many candidates were selected for the job?  
 1) 684  
 2) 151  
 3) 676  
 4) 179  
 5) None of these
114. The average of five numbers is 61. If the average of the first and the third number is 69 and the average of the second and fourth number is 69, what is the fifth number?  
 1) 31  
 2) 29  
 3) 25  
 4) 35  
 5) None of these
115. The ratio of the present ages of father, mother and daughter is 7 : 6 : 2. The difference between mother's and daughter's age is 24 years. What is father's age at present?  
 1) 43 years  
 2) 42 years  
 3) 39 years  
 4) 38 years  
 5) None of these
116. The average weight of 19 men is 74 kg and the average weight of 38 women is 63 kg. What is the average weight (rounded off to the nearest integer) of all the men and women together?  
 1) 59 kg  
 2) 65 kg  
 3) 69 kg  
 4) 67 kg  
 5) 71 kg
117. What should come in place of question mark so that it satisfies inequality of the following equation?

32% of 750 < ?

- 1) 23% of 600                      2) 46% of 207  
3) 98% of 250                      4) 75% of 320  
5) None of these

118. Mathew scored 42 marks in Biology, 51 marks in Chemistry, 58 marks in Mathematics, 35 marks in Physics and 48 marks in English. The maximum marks a student can score in each subject is 60. How much overall percentage did Mathew get in the exam?

- 1) 76                                      2) 82  
3) 68                                      4) 78  
5) None of these

119. The bus fare between Raipur and Mirpur for one adult is six times the fare for one child. If an adult's bus fare is ₹114, how much amount (in ₹) will be paid by 4 adults and 5 children together for travelling the same distance?

- 1) ₹505                                  2) ₹551  
3) ₹572                                  4) ₹560  
5) None of these

120. A truck covers a distance of 368 km at a certain speed in 8 hours. How much time would a car take at an average speed which is 18 km/hr more than the speed of the truck to cover a distance which is 16 km more than that travelled by the truck?

- 1) 7 hours                                  2) 5 hours  
3) 6 hours                                  4) 8 hours  
5) None of these

## Test-IV

### REASONING ABILITY

**Directions (Q. 121-125):** In these questions, relationships between different elements are shown in the statements. These statements are followed by two conclusions. Give answer

- 1) if only conclusion I follows.  
2) if only conclusion II follows.  
3) if either conclusion I or conclusion II follows.  
4) if neither conclusion I nor conclusion II follows.  
5) if both conclusions I and II follow.

121. **Statement:**

$$R \geq S \geq T > U > X; \quad T < V < W$$

**Conclusions:**

$$\text{I. } R > X \qquad \text{II. } X < W$$

122. **Statement:**

$$E = F < G < H; \quad G \geq I$$

**Conclusions:**

$$\text{I. } H > I \qquad \text{II. } E > I$$

123. **Statement:**

$$A > B > F > C; \quad D > E > C$$

**Conclusions:**

$$\text{I. } C < A \qquad \text{II. } B > D$$

124. **Statement:**

$$K \leq L \leq M = N; \quad P \geq O \geq N$$

**Conclusions:**

$$\text{I. } K < P \qquad \text{II. } K = P$$

125. **Statement:**

$$D < E < F < G; \quad K > F$$

**Conclusions:**

$$\text{I. } K \leq G \qquad \text{II. } K > D$$

126. Which of the following will come next in the following series?

0 9 0 1 9 0 1 2 9 0 1 2 3 9 0 1 2 3 4 9 0 1 2 3 4 5 9 0  
1 2 3 4 5

- 1) 0    2) 6  
3) 9    4) 7  
5) 4

**Directions (Q. 127-129):** Study the given information carefully and answer the given questions:

Among six people A, B, C, D, E and F, each of a different age, A is younger than only D. Only three people are younger than C. F is younger than E. F is not the youngest.

127. Who amongst the following is the youngest?

- 1) B    2) A  
3) E    4) C  
5) None of these

128. If E's age is 16 years, then which of the following may be B's age?

- 1) 19 years                                  2) 22 years  
3) 18 years                                  4) 17 years  
5) 12 years

129. How many people are younger than E?

- 1) One    2) Two  
3) Three                                      4) Four  
5) More than four

130. 'Talk' is related to 'Speak' in a certain way. Similarly, 'Honest' is related to 'Truthful'. Following the same logic, 'Listen' is related to which of the following?

1) 'Music'                      2) 'Ears'  
3) 'Hear'                      4) 'Ignore'  
5) 'Sound'

131. How many such pairs of letters are there in the word WONDERS, each of which has as many letters between them in the word (in both forward and backward directions) as they have between them in the English alphabetical series?

1) One                              2) Two  
3) Three                          4) More than three  
5) None

132. In a certain code language, 'DRINK' is coded as 'JMHQC' and 'BLOTS' is coded as 'RSNKA'. In the same code language, 'HONEY' will be coded as '\_\_\_\_\_'.  
1) XDMOG                      2) GNMDX  
3) XDMNG                      4) DXMGN  
5) Cannot be determined

**Directions (Q. 133-134): Study the given information carefully and answer the given questions:**

Twenty students are standing in a straight line, facing north. Rina is standing sixth from the left end. There are only three students between Rina and Shweta. Radha is standing exactly between Shweta and Rina. Tina is standing sixth to the right of Radha. Anita is standing fourth from the right end of the line. There are more than four students between Rina and Tina.

133. How many people are standing between Anita and Tina?

1) One                              2) Two  
3) Three                          4) None  
5) More than three

134. What is Shweta's position with respect to Anita?

1) Sixth to the left      2) Eighth to the left  
3) Seventh to the left      4) Ninth to the left  
5) None of these

135. Which of the following will come in place of the question mark (?) in the following series based on the English alphabetical order?

ZYW      VUS      RQO      ?      JIG

1) KMN                          2) MNK  
3) NLK                          4) NMK  
5) NML

**Directions (Q. 136-140): Study the given information carefully and answer the given questions**

Eight people J, K, L, M, N, O, P and Q are sitting around a circular table, facing the centre, not necessarily in the same order. O is sitting third to the right of M. There is only one person sitting between M and J. There are only three people between J and K. P is an immediate neighbour of J. There are only three people between P and L. N is second to the right of P.

136. Which of the following is true regarding the given arrangement?

1) M is an immediate neighbour of K.  
2) N is an immediate neighbour of J.  
3) P is second to the left of O.  
4) There are four people between N and O.  
5) None is true.

137. Who is sitting second to the left of the one who is sitting second to the left of Q?

1) M                                  2) K  
3) N                                  4) L  
5) J

138. Four of the following five are alike in a certain way based on their seating positions in the above arrangement and so form a group. Which does not belong to the group?

1) PQ                                  2) KL  
3) MN                                  4) QO  
5) KO

139. What is N's position with respect to K?

1) Second to the left      2) Second to the right  
3) Third to the left      4) Third to the right  
5) Fourth to the left

140. How many people are sitting between K and P when counted from the right side of K?

1) One                                  2) Two  
3) Three                                  4) None  
5) More than three

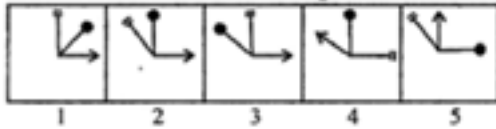
**Directions (Q. 141-145): In each of the questions below, two statements are given followed by two conclusions numbered I and II. You have to take the two statements to be true even if they seem to be at variance with commonly known facts and then decide which of the given conclusions logically follows from the given statements, disregarding commonly known facts.**

**Give answer**

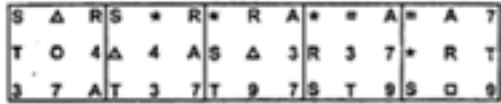
1) if only conclusion I follows.  
2) if only conclusion II follows.



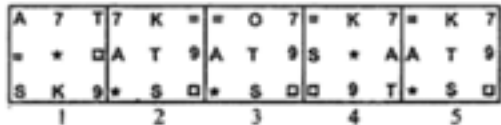
Answer Figures



152. Problem Figures



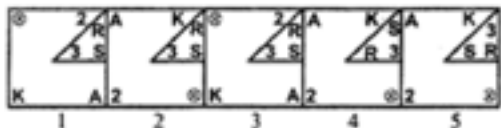
Answer Figures



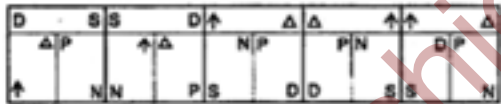
153. Problem Figures



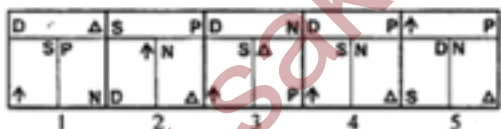
Answer Figures



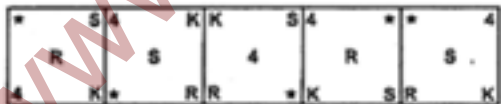
154. Problem Figures



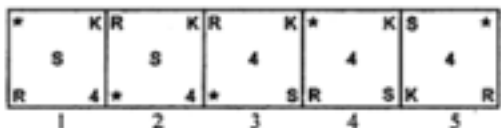
Answer Figures



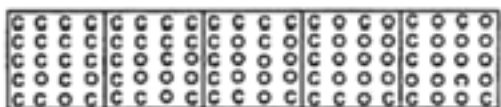
155. Problem Figures



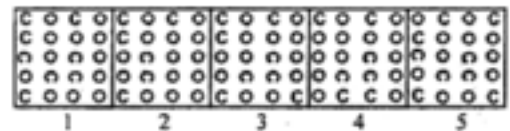
Answer Figures



156. Problem Figures



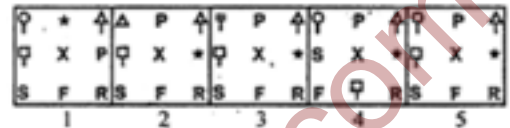
Answer Figures



157. Problem Figures



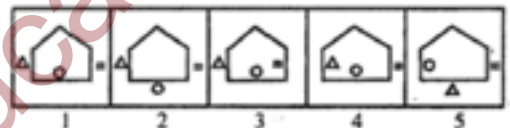
Answer Figures



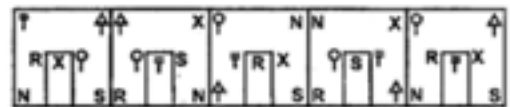
158. Problem Figures



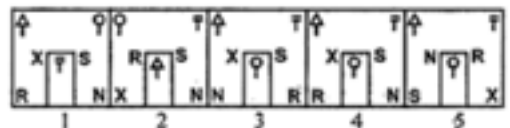
Answer Figures



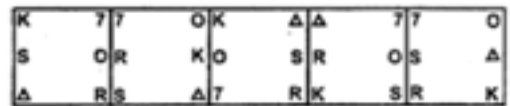
159. Problem Figures



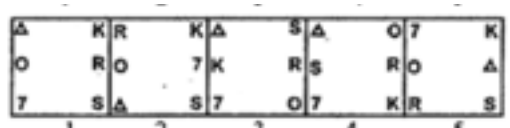
Answer Figures



160. Problem Figures



Answer Figures





## Test-V

### MARKETING APTITUDE/ COMPUTER KNOWLEDGE

161. The target group for a car loan is
- 1) all persons owning a car
  - 2) a family with more than two members
  - 3) car designers
  - 4) car garages
  - 5) car showrooms
162. Standard marketing practices include
- 1) poaching
  - 2) unhealthy competition
  - 3) lowering the selling price
  - 4) unhealthy discount schemes
  - 5) phishing
163. Market Segmentation means dividing
- 1) the marketing teams into small groups
  - 2) the employees as per their grades
  - 3) the products as per their usages
  - 4) the products as per their life cycles
  - 5) the market as per the tastes and needs of different groups
164. The process of discovering patterns and relationships using the available customer data to reveal what customers want and how they act is known as
- 1) data warehousing
  - 2) data base
  - 3) data mining
  - 4) data building
  - 5) data matching
165. Telemarketing means
- 1) Internet marketing
  - 2) Selling telephones
  - 3) Door-to-door contacts
  - 4) Sending and receiving SMS messages
  - 5) Marketing through telephone calls
166. Motivating customers to buy upgraded products when they had intended to buy something of lower value is known as
- 1) Cross-selling
  - 2) Forward-selling
  - 3) Marketing
  - 4) Channel marketing
  - 5) Up-selling
167. The modern marketing concept asserts that marketing starts with the product idea and ends with
- 1) production of quality product
  - 2) advertisement campaign
  - 3) customer satisfaction
  - 4) sale of the product
  - 5) exchange of money
168. A situation in which consumer purchases are unplanned is called
- 1) latent demand
  - 2) impulse buying
  - 3) irregular demand
  - 4) unwholesome buying
  - 5) None of these
169. Which of the following is NOT required in a good salesperson?
- 1) Sympathetic approach
  - 2) Good communication skills
  - 3) Courteous nature
  - 4) Persuasion skills
  - 5) Perseverance
170. The list of people who do not wish to receive telemarketing calls is
- 1) dare not call list
  - 2) do not call list
  - 3) do not dial list
  - 4) do never call list
  - 5) None of these
171. Marketing of goods experimentally in several carefully selected areas before releasing them on a wide scale is known as
- 1) sampling
  - 2) segmentation
  - 3) segregation
  - 4) test marketing
  - 5) grading
172. Motivation in marketing means
- 1) inspiring salespersons to talk more
  - 2) inspiring salespersons to sell more
  - 3) inspiring counter staff to talk more
  - 4) market size
  - 5) market place
173. Setting price of a product based on the buyer's perceptions of value rather than on the seller's cost is known as
- 1) break-even pricing
  - 2) target profit pricing
  - 3) cost-plus pricing
  - 4) value-based pricing
  - 5) None of these
174. Which of the following best describes the term 'Negative Demand'?
- 1) Consumers begin to buy a product less frequently.
  - 2) Consumers do not buy a product at all.
  - 3) Consumers are unaware or uninterested in a product.

- 4) Consumer purchases vary on a seasonal basis.  
5) Consumers dislike a product and may even pay to avoid it.
175. Leads for canvassing Home Loan accounts can be obtained from  
1) builders  
2) individuals building one's own house  
3) audit departments  
4) brick manufacturers  
5) cement suppliers
176. Internet Banking can be populated by way of  
1) reduced prices      2) higher prices  
3) wide-area network      4) better technology  
5) more ATMs
177. Uncertain outcomes involving the market for goods and services, such as the possibility of price declines or increases, changes in consumer preferences, and/or changes in the nature of competition, is called  
1) market scope      2) market risk  
3) market outlook      4) market outcome  
5) market design
178. Good competition helps in  
1) improved customer service  
2) reduced sales  
3) improved brand image  
4) more market share  
5) better customer profile
179. The systematic gathering, recording and analysing of data with respect to a particular market is known as  
1) market share      2) market segmentation  
3) market profile      4) market research  
5) marketing research
180. The most common source for leads generation for any company is  
1) house magazines      2) audit guidelines  
3) yellow pages      4) dictionary  
5) vision document
181. A kilobyte equals to how many bytes?  
1) 1000      2) 1035  
3) 100      4) 1008  
5) 1024
182. The Central Processing Unit is an example of  
1) peripheral device      2) an output unit  
3) software      4) a program  
5) hardware
183. CD-ROM stands for  
1) Compactable Read Only Memory  
2) Compact Data Read Only Memory  
3) Compactable Disk Read Only Memory  
4) Compact Disk Read Only Memory  
5) Connected Disk Read Only Memory
184. Which of the following terms refers to the ability of a computer to automatically configure a new hardware component that is added to it?  
1) Formatting      2) Multiprocessing  
3) Multiprogramming      4) Multitasking  
5) Plug and play
185. Free hard-disk space used to extend the capacity of RAM is termed  
1) Cache      2) Flash memory  
3) ROM      4) Virtual memory  
5) Volatile
186. Making illegal copies of copyrighted software is called  
1) collaboration  
2) software piracy  
3) electronic distribution  
4) browsing  
5) software legacy
187. What is loading the operating system into a personal computer called?  
1) Booting      2) Prompting  
3) Paging      4) Interrupting  
5) Readyng
188. Which of the following is not an example of application software?  
1) Database software  
2) Graphics software  
3) Operating system software  
4) Spreadsheet software  
5) Word processing software
189. Pie-charts are typically created by using which of the following?  
1) Browser software  
2) Database software  
3) Desktop-publishing software  
4) Word-processing software  
5) Spreadsheet software
190. The computer to which a user's computer connects in order to access the internet is called a  
1) notebook      2) PDA  
3) supercomputer      4) server  
5) laptop
191. Which of the following domains is used by for-profit businesses?

- |   |  |
|---|--|
| <p>1) .com                      2) .edu<br/>         3) .mil                     4) .net<br/>         5) .org</p> <p>192. WAN stands for</p> <ol style="list-style-type: none"> <li>1) Wired Area Network</li> <li>2) Wide Area Network</li> <li>3) Wide Array Net</li> <li>4) Wireless Area Network</li> <li>5) Wanted Area Network</li> </ol> <p>193. What are lists of programs waiting to be run called?</p> <ol style="list-style-type: none"> <li>1) Shells                      2) The background</li> <li>3) Queues                    4) Page frames</li> <li>5) Lists</li> </ol> <p>194. An example of peripheral equipment is the</p> <ol style="list-style-type: none"> <li>1) printer                      2) CPU</li> <li>3) spreadsheet              4) microcomputer</li> <li>5) ALU</li> </ol> <p>195. Which of the following commercial software products are examples of operating system software and application software, respectively?</p> <ol style="list-style-type: none"> <li>1) Microsoft Windows XP and Microsoft Word</li> <li>2) Microsoft Office XP and Microsoft Windows XP</li> <li>3) MS DOS and Microsoft Windows XP</li> <li>4) UNIX and LINUX</li> <li>5) UNIX and Java</li> </ol> <p>196. MS Excel is used for</p> <ol style="list-style-type: none"> <li>1) letter writing</li> <li>2) spreadsheet calculation</li> </ol> | <ol style="list-style-type: none"> <li>3) presentation</li> <li>4) painting</li> <li>5) None of these</li> </ol> <p>197. Computer users who are not computer professionals are sometimes called</p> <ol style="list-style-type: none"> <li>1) peripheral users</li> <li>2) programmers</li> <li>3) librarians</li> <li>4) information officers</li> <li>5) end-users</li> </ol> <p>198. Desktop and personal computers are also known as</p> <ol style="list-style-type: none"> <li>1) supercomputers</li> <li>2) servers</li> <li>3) mainframes</li> <li>4) peripheral equipment</li> <li>5) microcomputers</li> </ol> <p>199. The ability to exchange information through the use of computer equipment and software is</p> <ol style="list-style-type: none"> <li>1) data entry</li> <li>2) the internet</li> <li>3) data retrieval</li> <li>4) electronic communication</li> <li>5) None of these</li> </ol> <p>200. A computer professional who writes and tests software is called a</p> <ol style="list-style-type: none"> <li>1) hardware consultant</li> <li>2) librarian</li> <li>3) programmer</li> <li>4) computer operator</li> <li>5) data entry operator</li> </ol> |
|---|--|

**SOLUTIONS****SBI Associate Banks Clerical Exam**

1. 2 2. 5 3. 1 4. 4 5. 4  
6. 4 7. 2 8. 4 9. 1 10. 3  
11. 5 12. 3 13. 3 14. 5 15. 1  
16. 4 17. 2 18. 2 19. 2 20. 3  
21. 1 22. 5 23. 3 24. 1 25. 1  
26. 5 27. 5 28. 3 29. 1 30. 3  
31. 4 32. 2 33. 1 34. 2 35. 4  
36. 1 37. 4 38. 3 39. 2 40. 2

41. 3 Replace 'gone' with 'had gone'  
42. 2 Replace 'goes' with 'go'  
43. 2 Replace 'families' with 'family'  
44. 1 Replace 'were' with 'was'  
45. 4 Replace 'his' with 'her'  
46. 5 47. 5 48. 1 49. 5 50. 2  
51. 5  
52. 3 The correct spelling is 'parties'  
53. 4 The correct spelling is 'meeting'  
54. 1 Replace 'found' with 'fond'  
55. 3 Replace 'strand' with 'stand'

**(56-60): CFHDGBEA**

56. 4 57. 1 58. 4 59. 3 60. 1  
61. 3 62. 1 63. 4 64. 2 65. 2  
66. 5 67. 4 68. 1 69. 3 70. 5  
71. 3 72. 2 73. 2 74. 1 75. 3  
76. 4 77. 1 78. 1 79. 5 80. 4  
81. 5  $? = 1504 \times 5.865 - 24.091 = 8820.96 - 24.091$   
 $= 8796.869 \approx 8800$   
82. 3  $? = 16.928 + 24.7582 \div 5.015$   
 $= 17 + 25 \div 5 = 17 + 5 = 22$   
83. 1  
 $\sqrt[3]{7.938} \times (6.120)^2 - 4.9256 = 2 \times 37.45 - 4.9$   
 $= 74.9 - 4.9 = 70$

84. 1  $? = \frac{16}{2.80} \times 0.60 = \frac{96}{28} = 3.428 \approx 3.5$   
85. 4  $? = \sqrt{963} + (4.895)2 - 9.24$   
 $= 31 + 23.04 - 9.24$   
 $= 44.04 - 9 = 35.04 \approx 35$   
86. 2  $? = 228 + 104 - 210 = 332 - 210 = 122$   
87. 3  $\sqrt{65 \times 12 - 50 + 54} = \sqrt{780 - 50 + 54}$   
 $= \sqrt{784} = 28$   
88. 3  $\frac{15 \times 524}{100} - \frac{2 \times 985}{100} + ? = \frac{20 \times 423}{100}$   
or,  $15 \times 5.24 - 2 \times 9.85 + ? = 20 \times 4.23$   
 $\therefore ? = 84.60 + 19.70 - 78.60 = 25.70$   
89. 1  $? = 152 \times (228 \div 19)^2$   
 $= 152 \times 8 + \left(\frac{228}{19}\right)^2 = 152 \times 8 + (12)^2$   
 $= 1216 + 144 = 1360$   
90. 3  $\sqrt{1521} + \sqrt{225} = 39 + 15 = 54$   
91. 4  $38.734 + 8.638 - 5.19 = 47.372 - 5.19 = 42.182$   
92. 1  $7^? = 7^{8.9} \div (343)^{1.7} \times 49^{4.8}$   
 $7^{8.9} \div (7)^{3 \times 1.7} \times (7^2)^{4.8} = 7^{8.9 - 5.1 + 9.6}$   
 $= 7^{13.4} \therefore ? = 13.4$   
93. 5  $\sqrt[3]{512} \div \sqrt[4]{16} + \sqrt{576}$   
 $= \sqrt[3]{8 \times 8 \times 8} \div \sqrt{2 \times 2 \times 2 \times 2} + \sqrt{24 \times 24}$   
 $= \frac{8}{2} + 24 = 4 + 24 = 28$   
94. 2  $(42 \times 3.2) \div (16 \times 1.5) = 134.4 \div 24 = 5.6$   
95. 5  $199 + 125 \div 4 \times 16 = 199 + 31.25 \times 16$   
 $= 199 + 500 = 699$   
96. 5  $342 \div 6 \times 28 = 1099 + ?$

- or,  $57 \times 28 - 1099 + ?$   
 $\therefore ? = 1596 - 1099 = 497$
97. 4  $\frac{9.8 \times 2.5 \times 7.6}{0.5} = 372.4$
98. 4  $? = \frac{426 \times 5 \times 7}{3 \times 2} = 71 \times 5 \times 7 = 2485$
99. 1  $? = 4\frac{4}{5} - 3\frac{2}{5} - 1\frac{2}{9} = \frac{4}{5} - \frac{2}{5} - \frac{2}{9}$   
 $= \frac{36 - 18 - 10}{45} = \frac{8}{45}$
100. 2  $? = \frac{13}{63} \times \frac{14}{104} \times \frac{52}{19} = \frac{13}{171}$
101. 1 Marks of S in Chemistry = 120  
 Total marks obtained by all the five students together =  $90 + 110 + 100 + 120 + 60 = 480$   
 $\therefore \text{Reqd \%} = \frac{120}{480} \times 100 = 25\%$
102. 5 Marks obtained by T in Physics = 50  
 New marks of T in Physics =  $50 + \frac{50 \times 14}{100} = 57$   
 $\therefore \text{Reqd \%} = \frac{57}{140} \times 100 = 40.71 \approx 41\%$
103. 2 Total marks of T in both the subjects =  $50 + 60 = 110$   
 Marks obtained by R in Physics = 80, which is less than the marks obtained by T in both the subjects together.
104. 4 Ratio  
 $= \frac{\text{Total marks obtained by P in both the subjects}}{\text{Total marks obtained by T in both the subjects}}$   
 $= \frac{130 + 90}{50 + 60} = \frac{220}{110} = 2 : 1$
105. 2 Ratio  
 $= \frac{\text{Marks obtained by Q and S in Chemistry}}{\text{Marks obtained by P and R in Physics}}$   
 $= \frac{110 + 120}{130 + 80} = \frac{230}{210} = 23 : 21$
106. 1 The cost price of 23 bracelets  
 $= 23 \times 160 = ₹3680$   
 The selling price of 23 bracelets  
 $= 3680 + \frac{3680 \times 15}{100}$   
 $= 3680 + 552 = ₹4232$   
 $\therefore$  The selling price of 1 bracelet  
 $= \frac{4232}{23} = ₹184$
107. 1 Let Kajal's monthly expenditure on grocery, clothes and education be  $4x$ ,  $2x$ , and  $5x$  respectively. Then,  $2x = 5540$   
 $\therefore x = \frac{5540}{2} = 2770$   
 Hence, total monthly expenditure on grocery, clothes and education =  $4x + 2x + 5x = 11x = 11 \times 2770 = 30470$   
 55 percentage =  $30470$   
 $\therefore 100 \text{ percentage} = \frac{30470 \times 100}{55} = ₹55400$
108. 5 Let the first number be  $x$  and the second  $y$ .  
 Then,  $= \frac{x \times 35}{100} = \frac{2 \times 75 \times y}{100}$   
 or,  $\frac{x}{y} = \frac{2 \times 75}{35} = \frac{150}{35} = \frac{30}{7} = 30 : 7$
109. 4 Let the length be  $7x$  and the breadth  $2x$ .  
 Then area of the rectangular field  
 $= 7x \times 2x = 14x^2$   
 Now,  $14x^2 = 3584$   
 $\therefore x = \sqrt{\frac{3584}{14}} = \sqrt{256} = 16$   
 Hence length =  $16 \times 7 = 112$  metres  
 Breadth =  $2 \times 16 = 32$  metres  
 Perimeter of the rectangle  
 $= 2(l + b) = 2(112 + 32) = 2 \times 144 = 288$  metres
110. 1 The number of boys in school at present  
 $= 610 \times \frac{80}{100} = 488$



	Number of girls in school at present $= \frac{488 \times 175}{100} = 854$		Mathew's marks = $42 + 51 + 58 + 35 + 48 = 234$ $\therefore \text{Reqd \%} = \frac{234}{300} \times 100 = 78\%$
111. 3	Marks scored by Vidya = $350 + 296 = 646$ Now, 76% of the marks is 646. $\therefore$ Maximum marks of the test $= \frac{646}{76} \times 100 = 850$	119. 2	Fare of one adult = ₹ 114 $\therefore$ Fare of one child = $\frac{114}{6} = ₹ 19$ Fare of 4 adults and 5 children $= 4 \times 114 + 5 \times 19 = 456 + 95 = ₹ 551$
112. 5	$(100 - 40) = 60\%$ Now, 60% of the marks is 96. $\therefore$ 100% of the marks = $\frac{96}{60} \times 100 = 160$ $\therefore$ Thus, 40% of 160 = $\frac{40 \times 160}{100} = 64$ Hence, 64 marks was lost after re-evaluation.	120. 3	Speed of the truck = $\frac{368}{8} = 46 \text{ kmph}$ $\therefore$ Speed of the car = $46 + 18 = 64 \text{ kmph}$ $\therefore$ Distance travelled by the car = $368 + 16 = 384$ $\therefore$ Time = $\frac{384}{64} = 6 \text{ hours}$
113. 5	Selected candidates = $(100 - 80)\% = 20\%$ So, the number of candidates who were selected for the job $= \frac{855 \times 20}{100} = 171$	121. 5	<b>Given statements:</b> $R \geq S \geq T > U > X \quad \dots (i)$ $T < V < W \quad \dots (ii)$ Combining both the statements, we have $W > V > T > U > X$ or, $W > X$ or $X < W$ . Hence, conclusion II is true. Again, from (i), $R > X$ is true. Hence, conclusion I follows.
114. 2	Average of the first and the third number = $2 \times 69 = 138$ Average of the second and the fourth number = $69 \times 2 = 138$ Average of the fifth number = $61 \times 5 = 305$ Now, the fifth number = $305 - (138 + 138) = 305 - 276 = 29$	122. 1	<b>Given statements:</b> $E = F < G < H \quad \dots (i)$ $G \geq I \quad \dots (ii)$ Combining both the statements, we have $I \leq G < H$ , Thus, $I < H$ , So, $H > I$ is true. Hence, conclusion I follows. Again, $E = F < G \geq I$ We can't compare E and I. Hence, conclusion II does not follow.
115. 2	Let father's age be $7x$ years, mother's age be $6x$ years and daughter's age be $2x$ years. Then, $6x - 2x = 24$ $\therefore x = \frac{24}{4} = 6$ $\therefore$ Hence, father's age = $7 \times 6 = 42$ years	123. 1	<b>Given statements:</b> $A > B > F > C \quad \dots (i)$ $D > E > C \quad \dots (ii)$ From (i), we have $A > C$ , so $C < A$ is true. Hence, conclusion I is true. Again, combining both the statements, we have $A > B > F > C < E < D$
116. 4	Average = $\frac{19 \times 74 + 38 \times 63}{19 + 38}$ $= \frac{1406 + 2394}{57} = \frac{3800}{57} = 66.66 \text{ kg} \approx 67 \text{ kg}$		
117. 3	$32\% \text{ of } 750 < 98\% \text{ of } 250$ or, $240 < 245$		
118. 4	Total marks = $60 \times 5 = 300$		

We can't compare B and D.

Thus, conclusion II does not follow.

124. 3 Given statements:

$$K \leq L \leq M = N \quad \dots (i)$$

$$P \geq O \geq N \quad \dots (ii)$$

Combining both the statements, we have

$$K \leq L \leq M = N \leq O \leq P$$

Thus,  $K \leq P$ , means  $K < P$  may be true. And  $K = P$  may also be true.

Hence, either conclusion I or II follows.

125. 2 Given statements:

$$D < E < F < G \quad \dots (i)$$

$$K > F \quad \dots (ii)$$

Combining both the statements we have,

$$K > F < G$$

We can't compare K and G.

Thus, conclusion I does not follow.

Again,  $D < E < F < K$ .

Thus,  $D < K$ . So,  $K > D$  is true.

Hence, conclusion II follows.

126. 2 090/ 190/ 1290/ 12390/ 123490/ 1234590/ 12345690

(127-129):

After rearranging them according to the descending order of their ages, the arrangement is as follows.

$$D > A > C > E > F > B$$

127. 1

128. 5 Since B is younger than E and E's age is 16 years. So, B's age will be less than E's age.

129. 2 130. 3

131. 4

132. 3 Reverse all the letters of DRINK and then,

K	N	I	R	D
↓ -1	↓ -1	↓ -1	↓ -1	↓ -1
J	M	H	Q	C

Similarly,

S	T	O	L	B
↓ -1	↓ -1	↓ -1	↓ -1	↓ -1
R	S	N	K	A

Similarly,

Y	E	N	O	H
↓ -1	↓ -1	↓ -1	↓ -1	↓ -1
X	D	M	N	G

(133-134):

Anita is 4th from the right end.

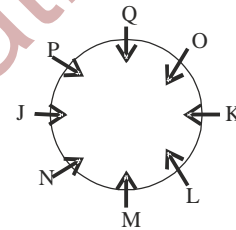
Thus, in the row, Anita's position from the left end  $(20 - 4 + 1) = 17^{\text{th}}$

133. 2

134. 3

135. 4 Move four letters backwards in the alphabet for the corresponding letter of the next turn.

(136-140):



136. 2 137. 1 138. 5 139. 3 140. 2

141. 4 Some rings are circles (I) + No circle is a square (E) =  $I + E = O$  = Some rings are not squares.

Hence, conclusion I and II do not follow.

142. 5 All rows are lines (A) + All lines are queues (A) =  $A + A = A$  = All rows are queues.

Hence, conclusion I follows.

Again, All lines are queues (A) → conversion → Some queues are lines. Hence, conclusion II follows.

143. 1 Some laptops are notebooks (I) → conversion → Some notebooks are laptops (I) + All laptops are computers (A) =  $I + A = I$  = Some notebooks are computers (I). Hence conclusion I follows. But conclusion II does not follow.

144. 4 Some participants are students (I) + Some students are boys (I) =  $I + I =$  No conclusion

Hence, neither conclusion I nor II follows.

145. 1 All sparrows are birds (A) + No bird is a reptile (E) = A + E = E = No sparrow is a reptile.  
Hence, conclusion I follows. But conclusion II does not follow.

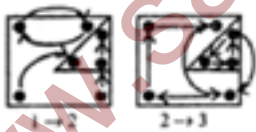
(146-150):

Month	City
January	Mumbai
February	Kolkata
March	Chennai
April	Bangalore
May	Delhi
June	Bhopal
July	Cochin

146. 1    147. 5    148. 4    149. 4    150. 5  
151. 2 In subsequent steps, ( $\uparrow$ ) rotates by  $90^\circ$ ,  $135^\circ$ ,  $225^\circ$  and  $270^\circ$  CW, and ( $\uparrow$ ) rotates by  $45^\circ$  and  $90^\circ$  CW each in alternate steps, while ( $\bar{\uparrow}$ ) rotates by  $45^\circ$  ACW in each step.  
152. 5 It follows if  $1 \rightarrow 2$ ,  $3 \rightarrow 4$  then  $5 \rightarrow 6$  rule while the elements follow the pattern as given below:

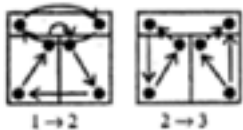


153. 2 It follows if  $1 \rightarrow 2$ ,  $3 \rightarrow 4$  then  $5 \rightarrow 6$  rule while the elements follow the pattern as given below:

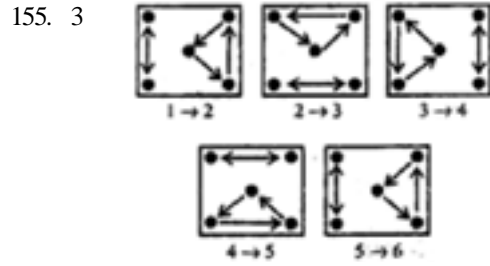


Then,  $5 \rightarrow 6$  figure follows the same pattern as  $2 \rightarrow 3$ .

154. 3 It follows if  $1 \rightarrow 2 \rightarrow 3$  then  $4 \rightarrow 5 \rightarrow 6$  rule while rotation of the elements follows the pattern given below:

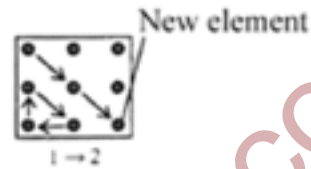


Then,  $5 \rightarrow 6$  figure follows the same pattern as  $2 \rightarrow 3$ .



156. 3

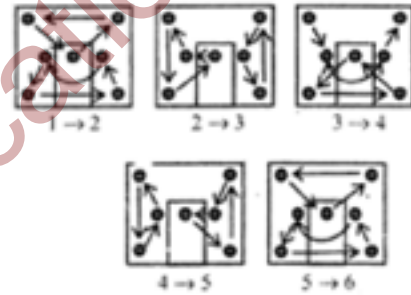
157. 5



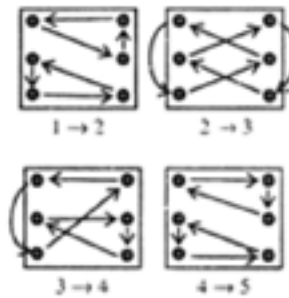
Same as  $5 \rightarrow 6$

158. 3

159. 4



160. 3



$1 \rightarrow 2$  same as  $4 \rightarrow 5$

$2 \rightarrow 3$  same as  $5 \rightarrow 6$

161. 2    162. 3    163. 5    164. 3    165. 5  
166. 5    167. 3    168. 2    169. 1    170. 2  
171. 4    172. 1    173. 4    174. 5    175. 2  
176. 4    177. 2    178. 1    179. 4    180. 3  
181. 5    182. 5    183. 4    184. 5    185. 4  
186. 2    187. 1    188. 3    189. 5    190. 4  
191. 1    192. 2    193. 3    194. 1    195. 1  
196. 2    197. 5    198. 5    199. 4    200. 3