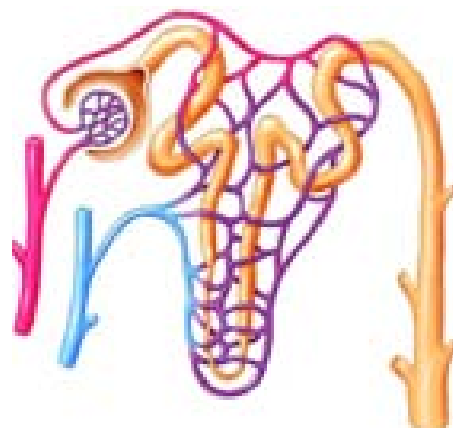


## Chapter

# 4



## Excretion - The wastage disposing system

There is no factory which can manufacture a product without generating any waste. This is true of our body which is a cellular factory too. And for other organisms as well. Wastes are generated at regular intervals from the bodies of most organisms. This raises questions like.

- *Where are the wastes produced?*
- *How are they produced?*
- *What are the substances present in them?*
- *Does the composition vary in the same organism in different situations?*

Let us understand such kind of questions.

Living beings need energy for their survival and to perform activities either building up of body material (anabolism) or its breakdown (catabolism), collectively called metabolic activities. Organisms use different substances for metabolic activities. Different products are generated as a result of these metabolic activities. Can you name different products generated by the following life processes?

**Table-1**

Life processes	Products
Photosynthesis	
Respiration	
Digestion	

- *What products would the organism be able to take up for other activities?*
- *What products which would cause harm to the body, if they are not removed?*
- *What happens if harmful products are not removed from our body every day?*

We have already learnt that different kinds of materials are produced out of various metabolic activities. Some of these may be harmful for the organism are removed from their body or packed and stored in some other forms. These are all the wastes produced in the body of an organism. We have already discussed how organisms get rid of gaseous wastes generated during photosynthesis or respiration. Other metabolic activities generate nitrogenous wastes have to be removed along with salts, excess water and several other materials. Excretion is the term coined for all the biological process involved in separation and removal of wastes or non useful products from the body. (In latin ex means out, crenere means shift.) Now let us study how excretion takes place in human being.

### **Excretion in Human Beings**

A number of reactions take place during various metabolic activities. Many useful substances and energy are produced. At the same time many other things happen such as, toxic wastes may be produced, water content may increase, ionic balance in the body may be disturbed. The waste products include carbon dioxide, water, nitrogenous compounds like ammonia, urea, uric acid, bile pigments, excess salts etc. The most poisonous of all waste products of metabolism is Ammonia.

Where are these waste material produced? How does the body manage them. Is there a way to detect their presence in our body?

Now let us observe the test reports of Blood and Urine of a person given in table-2 and find out the components present in both Blood and Urine. (For 24 hours urine test urine collected for 24 hours for that 100-150 ml sample will be tested.)

- *What are the substances present in blood?*
- *What are the substances present in urine?*
- *What are the substances present both in blood and urine?*
- *Which substances are present above the normal limits both in the blood and urine?*
- *What do you think a reading about normal limits indicates?*

**Table-2: DEPARTMENT OF BIOCHEMISTRY**  
**REPORT ON PLASMA/SERUM (BLOOD) ANALYSIS**

TEST/METHOD	RESULT	UNITS	RANGE
GLUCOSE FASTING	82	mg/dl	60-100 (GOD POD)
SODIUM	137	mmoles/L	135-145
POTASSIUM	4.10	mmoles/L	3.5-5.0
CHLORIDES	101	mmoles/L	95-106
UREA	29	mg/dl	15-40
CREATININE	2.8.	mg/dl	0.6-1.5
URICACID	7.50	mg/dl	3.0-5.0
TOTAL CHOLESTEROL	221	mg/dl	150-200
TRIGLYCERIDES	167	mg/dl	60-200
CALCIUM	9.40	mg/dl	8.0-10.5
PHOSPHORUS	4.50	mg/dl	3-4.5
BILURUBIN(TOTAL)	0.70	mg/dl	0.1-0.8
TOTAL PROTEINS	7.20	g/dl	6.0-7.5
ALBUMIN	4.60	g/dl	3.0-5.0

**Table-3: DEPARTMENT OF BIOCHEMISTRY**  
**REPORT ON URINE ANALYSIS**

TEST/METHOD	RESULT	UNITS	RANGE
24 hrs. Protein	90	mg/day	<100 mg
24 hrs Creatinine	2.7	mg/day	1-2
24 hrs. Calcium	305	mg/day	Up to 200
24hrs. phosphorous	0.8	mg/day	upto 1g
24hrs. uric Acid	800	mg/day	upto 600

**ELECTROLYTES :**

Sodium	140	mmol/L	125-250
potassium	50	mmol/L	25-100
Osmolality (calculated)	180	mosm/L	100-600
Glucose	65	mg/dl	50-80
Chlorides	128	mmol/L	120-130
Urea	35	gm/day	20-30

m moles / L means millimoles per litre, mg/dl means milligram per deci litre.

- *What are the materials needed to removed from our body?*
- *From where do these materials removed?*
- *What are the organs that seperate excretory materials?*
- *How do you think the body must be remove waste substances?*

Studying the structure and function of our excretory system will help us to understand this better.

## Excretory System in Human being

In human beings excretion mainly occurs through a urinary or excretory system consisting of a pair of kidneys, a pair of ureters, urinary bladder and urethra, as shown in the fig-4. Now let us observe external and internal features of a kidney in goat / sheep, which is similar to Human kidney in function.



### Lab Activity

**Aim:** Studying the external and internal features of a kidney

**Materials required:** Freshly collected specimen of sheep/goat's kidney from the butcher or 3D Model of a kidney, sharp blade/scalpel, tray and a jug of water.

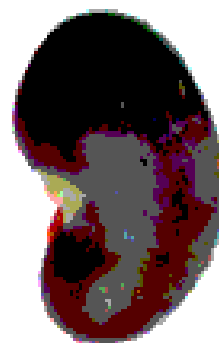
**Procedure for observation:** Before coming to the class wash the kidney thoroughly so that, blood is completely drained from it. Put the kidney in the tray and observe it carefully. Note your observations in the observation book. With the help of sharp blade take a longitudinal section here you are advised to do this activity under the guidance of your teacher and observe the internal structure.

Draw what you have observed and compare it with fig-1,2.

- *What is the shape of kidneys?*
- *What is the colour of kidney?*
- *Do you find any attachments on upper portion of kidney?*
- *Is the Internal structures similar to fig-2*
- *What is the colour of the outer part in L.S of kidney?*
- *In L.S of kidney where do you find dark colour portion?*
- *How many tubes are coming out from kidney fissure?*

Don't forget to wash your hands with antibacterial lotion after completing dissection.

Now let us know the structure of human excretory system and its functions.



*fig-1: Kidney of goat*



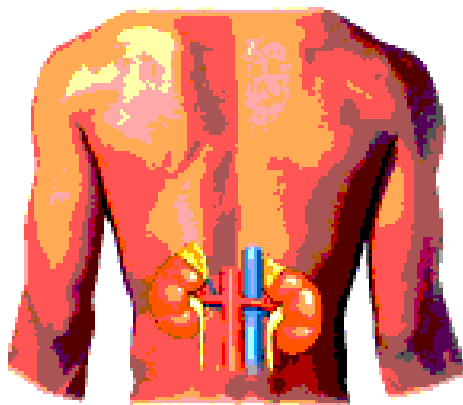
*fig-2: LS of Kidney of goat*

## Kidneys

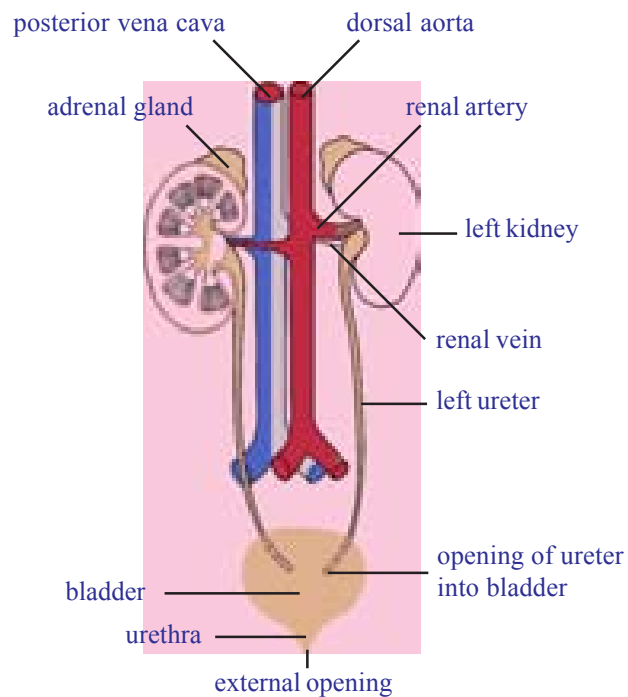
In Human being there are a pair of bean shaped, reddish brown structures in the abdominal cavity attached to dorsal body wall (fig-3) one on either side of the back bone. The right kidney is placed slightly lower than the left kidney. Think why it is so?

The size of the kidney is 10 cm in length, 5-6 cm in breadth, and 4 cm in thickness. Each kidney is convex on the outer side and concave on the inner side. The position of the right kidney is lower than the left kidney due to the presence of liver above.

Let us recall the last question in your lab activity. The inner side of each kidney has a fissure or hilus for the entry of a **renal artery**, exit of a **renal vein** and an **ureter**. Renal artery brings oxygenated blood loaded with waste products and renal vein carries deoxygenated blood. The waste products generated in various organs of the body are filtered and removed by the kidneys.



*fig-3: Location of kidneys*



*fig-4: Excretory system*

### Internal structure of the kidney:

Let us observe L.S of the kidney to know more about internal structure. It shows two distinct regions. Dark coloured outer zone called the cortex and pale inner zone called medulla. Each kidney is made up of approximately more than one million (1.3 to 1.8 million) microscopic and thin tubular functional units called nephrons or uriniferous tubules.

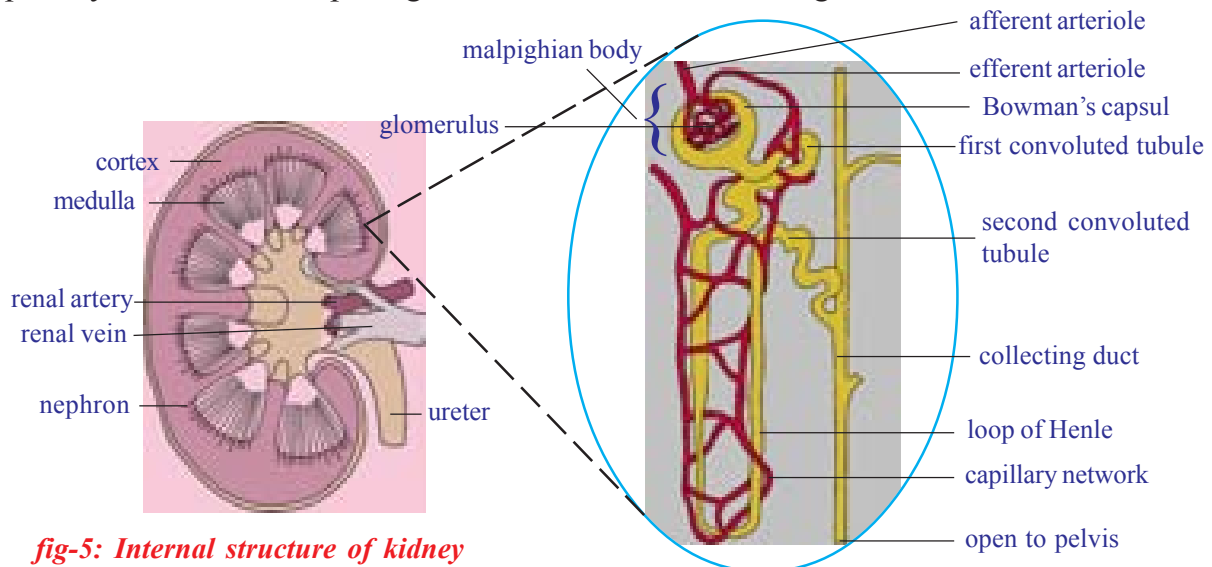
## Structure of nephron

Each nephron has basically two parts. One is malpighian body and other is renal tubule.

**Malpighian body:** It consists of a blind cup shaped broader end of nephron called Bowman's capsule and bunch of fine blood capillaries called glomerulus. The Bowman's capsule and glomerulus together called malpighian capsule or renal capsule. Glomerulus develops from afferent arteriole. It gives rise to an efferent arteriole.

- *Think why the diameter of the efferent arteriole is less than that of afferent arteriole?*

Because of the narrower out let (efferent arteriole) pressure exerts in the glomerulus. It functions as a filtration unit. Bowman's capsule which accommodates one glomerulus, is lined by a single layer of squamous epithelial cells called podocyte cells. There are fine pores between podocyte cells to allow passage of materials filtered out of glomerulus.



**fig-5: Internal structure of kidney**

**fig-6: Structure of a nephron**

**Renal tubule:** It has three parts. First or proximal convoluted tubule (PCT), loop of Henle, which is U shaped, second or distal convoluted tubule (DCT).

Distal convoluted tubules open into a collecting tube. Collecting tube form pyramids and calyces which open into the pelvis. Pelvis leads into the ureter. All the parts of the renal tubule are covered by a network of peritubular (around tube) capillaries formed from efferent arteriole. The peritubular capillaries join to form renal venule, which joins the other venules to form finally the renal vein.

- *Why the nephron is considered to be the structural and functional unit of the kidney?*

## Mechanisms of urine formation

Formation of urine involves four stages *i. Glomerular filtration, ii. Tubular reabsorption, iii. Tubular secretion, iv. Concentration of urine*

### i) Glomerular filtration

Blood flows from renal artery to glomerulus through afferent arteriole. Observe the fig-7 of glomerular filtration in nephron and try to answer the following questions.

- Which arteriole has more diameter, afferent or efferent?
- What are the substances that are filtered into the glomerular capsule?

### ii) Tubular Re-absorption

Filtrate from glomerular is also called primary urine which almost equal to blood in chemical composition except the presence of blood cells. It passes into proximal convoluted tubule. Useful substances in primary urine are reabsorbed into peritubular net work.

- If you drink more water will you pass more urine?
- What are the substances reabsorbed into peritubular net work from proximal convoluted tubule (PCT)?

### iii) Tubular secretion

After reabsorption in PCT region, the urine travels through the loop of Henle into DCT. Here some other wastes like extra salts ions of  $K^+$   $Na^+$   $Cl^-$  and  $H^+$  secrets from peritubular capillaries in to DCT. It occurs mostly in the distal convoluted tubule, which is also surrounded by peritubular capillaries. This maintains a proper concentration and pH of the urine. Smaller amount of tubular secretion also takes place in the area of proximal convoluted tubule. Observe tubular secretion in fig-7.

- What are the substances that secretes into DCT?



### Do you know?

After the age of 40 years the number of functioning nephrons usually decreases by about 10% in every 10 years.

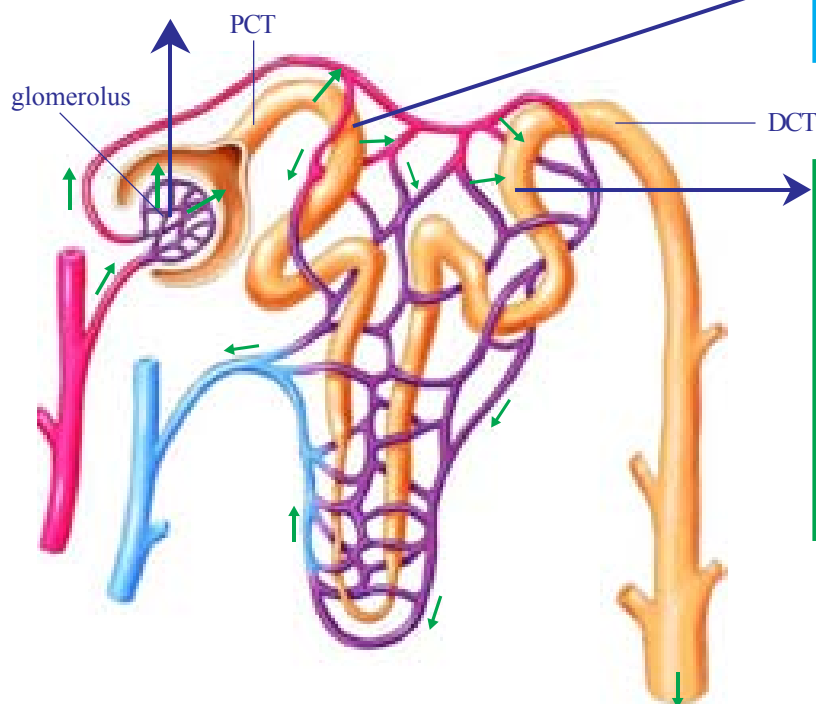
### iv) Concentration of urine

Seventy five % of water content of nephric filtrate is reabsorbed in the region of proximal convoluted tubule. 10% of water passes out of filtrate through osmosis in the area of loop of Henle. Further concentration of urine takes place in the area of collecting tubes in the presence of



**i) Glomerular filtration:** Blood flows inside the glomerulus under the influence of pressure due to the narrowness of efferent arteriole. As a result it undergoes pressure filtration or ultra filtration. Waste molecules, nutrient molecules and water are filtered out and enter the Bowman's capsule.

**ii) Tubular reabsorption:** The peritubular capillaries around PCT reabsorb all the useful components of primary urine such as glucose, amino acids, vitamin C, Potassium, Calcium, Sodium, Chlorides and 75% of Water.



**iii) Tubular secretion:** It is the active secretion of waste products by blood capillaries into the urinary tubule. It ensures removal of all the waste products from blood, viz., urea, uric acid, creatinine, salt ions like  $K^+$ ,  $Na^+$  and  $H^+$  ions. This maintains proper concentration and pH of urine.

**fig-7: Mechanism of urine formation**

hormone called vasopressin. The hormone is secreted only when concentrated urine is to be passed out. Think why is it not secreted when a person drinks a lot of water? Absence of vasopressin hormone produces dilute urine. Hormone action maintains osmotic concentration of body fluids. Deficiency of vasopressin causes excessive, repeated, dilute urination called diabetes insipidus.

- *Why more urine is produced in winter?*
- *What happens if reabsorption of water does not take place?*

Now let us discuss remaining parts of excretory system.

## 2. Ureters

There are a pair of whitish, narrow distensible and muscular tubes of 30cm length. Each ureter arises from hilus of the kidney. It moves downward and obliquely opens into the urinary bladder. Ureter carries urine from the kidney to the urinary bladder. The movement of urine in the ureter is through peristalsis.



### 3. Urinary bladder

It is a median, pear shaped and distensible sac that occurs in the pelvic part of the abdomen. It stores urine brought by two ureters. The storage capacity of urinary bladder is 300 - 800ml.

### 4. Urethra

It is a tube that takes urine from urinary bladder to outside. The opening of urinary bladder into urethra is guarded by a ring of muscles or sphincter. Urethra is 4 cm long in females and about 20cm long in males. Its opening is separate in females but is in common with the reproductive tract in males (urino-genital duct).

### Micturition

The urine is temporarily stored in the bladder. There are two sets of circular sphincter muscles in the bladder. When the bladder is filling up both these muscles are constricted, so the exit is closed. However as the pressure of the urine increases the walls of the bladder are stretched and this triggers off an automatic reflex action which causes the upper sphincter to relax. But the lower sphincter is under the control of brain. So urine can still be retained until this muscle is relaxed too. Control of urination is not possessed by very young children but is gradually learned.

Urge for micturition occurs when urinary bladder is filled with 300 - 400 ml of urine. The stretched bladder stimulates nerve endings to develop the reflex. However, urine can be retained in the urinary bladder till it gets filled up to the maximum capacity of 700 - 800ml. At this time the urge becomes painful and leads to voluntary micturition. Total amount of urine excreted per day is about 1.6-1.8 litres. It's quantity increases with larger intake of fluids like water, fruit juices and decreases with lesser intake.



#### Think and discuss

- Do cells need excretion?
- Why we advised to take sufficient water?
- Why do some children pass urine during sleep at night until 15 or 16 years of age?

### Composition of urine

It is a transparent fluid produced by urinary system. Urine has amber color due to presence of urochrome. Composition of normal urine varies considerably depending on several factors for instance taking a protein

rich diet will result in more formation of urea in the urine. This is because the proteins get de-aminated in the liver with subsequent formation urea. Even sugar can appear in a normal person after a heavy intake. If other conditions are constant, a large intake of liquids or water - rich food increases the volume of water in the blood, hence more urine is excreted.

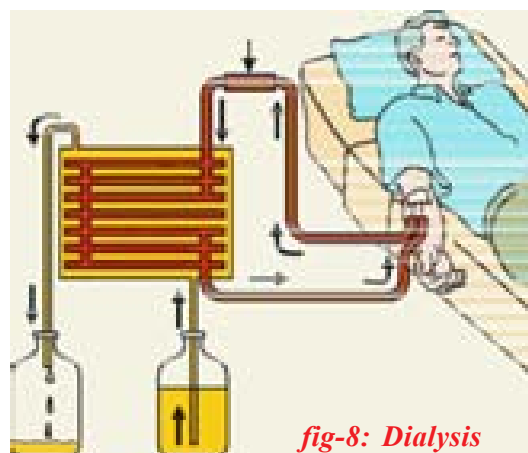
Urine contains 96% of water 2.5% of organic substances (urea, uric acid, creatine, creatinine, water soluble vitamins, hormones, and oxalates etc) and 1.5% of inorganic solutes (sodium, chloride, phosphate, sulphate, magnesium, calcium, iodine). It is acidic in the beginning but becomes alkaline on standing due to decomposition of urea to form ammonia.

- *What happens if both kidneys fail completely?*

Complete and irreversible kidney failure is called end stage renal disease (ESRD). If kidneys stop working completely, our body is filled with extra water and waste products. This condition is called uremia. Our hands or feet may swell. You feel tired and weak because your body needs clean blood to function properly. Is there any solution to this problem? Let us know about artificial kidney.

### **Dialysis (Artificial kidney)**

Kidneys are vital organs for survival. Several factors like infections, injury, very high blood pressure, very high blood sugar or restricted blood flow to kidneys. This leads to accumulation of poisonous wastes in the body and leads to death. Dialysis machine is used to filter the blood of a person when both kidneys are damaged. The process is called 'haemodialysis'. In this process blood is taken out from the main artery, mixed with an anticoagulant, such as heparin, and then pumped into the apparatus called dialyzer. In this apparatus blood flows through channels or tubes. These tubes are embedded in the dialyzing fluid. The membrane separates the blood flowing inside the tube and dialyzing fluid (dialysis), which has the same composition as that of plasma, except the nitrogenous wastes.



As nitrogenous wastes are absent in dialyzing fluids, these substances from the blood move out freely, thereby cleaning the blood of its wastes. This process is called dialysis. This is similar to function of the kidney but is different as there is no reabsorption involved. The cleaned blood is pumped back to the body through a vein after adding anti-heparin. Each

dialysis session lasts for 3 to 6 hours. This method has been using for thousands of uremic / kidney failure patients all over the world.

- *Is there any long term solution for kidney failure patients?*

### **?** Do you know?

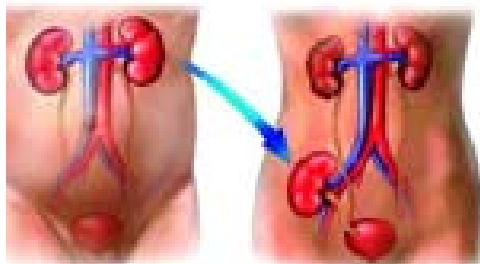
The first kidney transplantation was performed between identical twins in 1954 by Dr. Charles Hufnagel was a surgeon at Washington, USA . In India first kidney transplantation was done on 1<sup>st</sup> December 1971 at the Christian Medical college, Vellore, Tamilnadu.



*Dr. Charles Hufnagel*

### **Kidney transplantation**

The best long term solution for kidney failure (acute renal failure) is Kidney transplantation. A functioning kidney is used in transplantation from a donor preferably a close relative. The kidney that is received by a recipient must be a good match to his body, to minimize the chances of rejection of transplanted kidney by the immune system of the recipient. Modern clinical procedures have increased the success rate of such complicated technique.



*fig-9: Kidney transplantation*

- *Where the transplanted kidney fixed in the body of a kidney failure patient?*
- *What about the failure kidneys?*
- *Can donar survive her life with single kidney without any complications?*

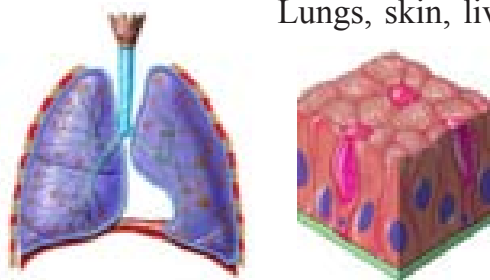
Now a days the process of organ donation helps a lot kidney failure patients. Organs are collected from brain dead patients. Then transplanted to the receipient. Know more about organ donation see in annexure.

### **Other pathways of excretion (accessory excretory organs)**

You have learnt about kidney, chief excretory organ of our body.

- *What are the other excretory organs of human body?*

Lungs, skin, liver have their own specific functions but carry out excretion as a secondary function.



*fig-10: Lung, Skin*

**Lungs:** In respiratory process lungs remove carbon dioxide and water.

**Skin:** It consists of large number of sweat glands richly supplied with blood capillaries, from which they extract sweat and some metabolic wastes.

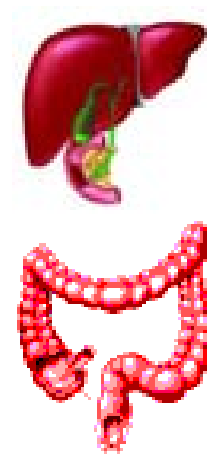
Since the skin sends out plenty of water and small amount of salts, it serves as an excretory organ. Sebaceous glands in skin eliminate sebum which contains waxes, sterols, hydrocarbons and fatty acids.

- *Collect information on sebum and prepare a news bulletin, display it on bulletin board?*
- *People in cold countries get very less/no sweat. What changes occur in their skin and in other excretory organs?*

**Liver:** It produces bile pigments (bilirubin, biliverdin and urochrome) which are metabolic wastes of haemoglobin of dead R.B.Cs. Urochrome is eliminated through urine. Biliverdin and bilirubin are excreted through bile along with cholesterol and derivatives of steroid hormones, extra drug, vitamins and alkaline salts. Liver is also involved in urea formation.

**Intestine:** Excess salts of calcium magnesium and iron are excreted by epithelial cells of colon (large intestine) for elimination along with the faeces.

Small amount of nitrogenous wastes are also eliminated through saliva and tears.



*fig-11: Liver, intestine*

### Excretion in other organisms

Different organisms use varied strategies in excretion. Specific excretory organs are absent in unicellular organisms. These organisms remove waste products by simple diffusion from the body surface into the surrounding water. Fresh water organisms like *Amoeba*, *Paramecium* possess osmoregulatory organelle called contractile vacuole. It collects water and waste from the body, swells up, reaches the surface and bursts to release its content to outside. The main excretion takes place through body surface (osmosis).

**Table-3**

Name of the phylum organism	Excretory system
Protozoa	Simple diffusion from the body surface into the surrounding water
Porifera and coelenterates	Water bathes almost all their cells
Platyhelminthes and Nematoda	Flame cells
Annelids	Nephridia
Arthropoda	Green glands, Malpighian tubules
Mollusca	Meta nephridia
Echinodermata	Water vascular system
Reptiles, Birds and Mammals	Kidneys

Multicellular organisms possess different excretory organs for removal of waste materials from the body. Structural and functional complexity of excretory organs increases from sponges to humans. Sponges and coelenterates do not have specific excretory organs as water bathes almost all their cells. Excretory structures appear for the first time in Flatworms (Platyhelminthes) are known as flame cells.

Now let us see how this vital process takes place in plants

### Excretion and release of substance in plants

Do plants excrete like animals?

We are amazed to answer such type of questions. You are aware that a variety of end products are formed during metabolism and these nitrogenous wastes are important. Plants does not have specific organs to excrete these wastes. Plants break down waste substances at much slower rate than in animals. Hence accumulation of waste is also much slower. Green plants in darkness and plants that do not possess chlorophyll produce carbon dioxide and water as respiratory waste products. Oxygen itself can be considered as a waste product generated during photosynthesis, that exits out side through stomata of leaves and lenticels of stem.

- *How plants manage or send out waste products from its body?*

Plants can get rid of excess water by a process like transpiration and guttation. Waste products may be stored in leaves, bark, and fruits. When these dead leaves, bark, and ripe fruits fall off from the tree then waste products in them are get rid off. Waste gets stored in the fruits in the form of solid bodies called Raphides. However several compounds are synthesized by the plants for their own use especially for defense. Many plants synthesize chemicals and store them in roots, leaves, seeds, etc., for protection against herbivores. Most of the chemicals are unpleasant to taste. Hence, herbivores usually do not prefer to eat such plants. Some of the chemicals are toxic and may even kill the animal that eats them.



#### Think and discuss

- Why weeds and wild plants are not affected by insects and pests?

Some of the plants secrete chemicals when injured. These chemicals seal the wound and help the plant to recover from an injury. Some of the plants release attractants for other organisms which will help the plants for pollination, seed dispersal or even in their nutrition. For example, plants

having root nodules secrete chemicals to attract rhizobia into the surroundings of the roots and form a symbiotic relationship with the rhizobium. These compounds are called secondary metabolites.

- *Why plants shed their leaves and bark periodically?*

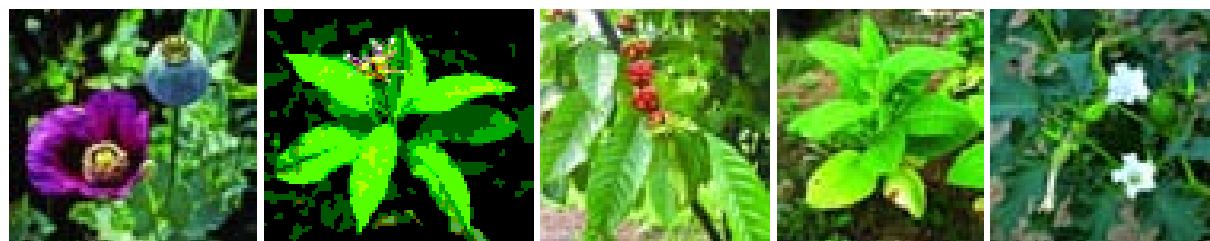
The biochemical substances produced in plants are of two types, primary metabolites and secondary metabolites. The materials like carbohydrates, fats and proteins are primary metabolites. The materials which do not require for normal growth and development are secondary metabolites. e.g.: Alkaloids, Tannins, Resins, Gums, and Latex etc. Though plants produce these chemical for their own use. Man found the usage of these chemicals for own benefits. They are generally coloured and fragrant.

### Alkaloids:

These are nitrogenous by- products and poisonous. These are stored in different parts of the plants. Common alkaloids in plants and their uses are given below.

**Table-4**

ALKOLOID	PLANT	PART	USES
Quinine	Cinchona officinalis (Cinchona)	Bark	Antimalarial drug
Nicotine	Nicotiana tobacum (Tobacco)	Leaves	Insecticide
Morphine, Cocaine	Papaver somniferum (Opium)	Fruit	Pain killer
Reserpine	Rauwolfia serpentina (Snake root)	Root	Medicine for Snake bite
Caffeine	Coffea Arabica (Coffee plant)	Seed	Central nervous system Stimulant
Nimbin	Azadirachta indica(neem)	Seeds, Barks, Leaves.	Antiseptic
Scopolamine	Datura stramonium	Fruit, flower	Sedative
Pyrethroids	Chrysanthemum	Flower	Insecticides



*Papaver*

*Rauwolfia*

*Coffea Arabica*

*Tobacco*

*Datura*

*fig-12: Plants which produce Alkaloids*

- *Name the alkaloids which are harmful to us?*



**Tannins:** Tannins are carbon compounds. These are stored in different parts of the plant and are deep brown in colour. Tannins are used in tanning of leather and in medicines e.g. Cassia, Acacia.

**Resin:** Occur mostly in Gymnosperms in specialized passages called resin passages. These are used in varnishes- e.g. Pinus.



*fig-13(a): Cassia*



*fig-13(b): Acacia*



*fig-13(c): Pinus*

**Gums:** Plants like Neem, Acacia ooges out a sticky substance called gum when branches are cut. The gum swells by absorbing water and helps in the healing of damaged parts of a plant. Gums are economically valuable and used as adhesives and binding agents in the preparation of the medicines, food, etc.

**Latex:** Latex is a sticky, milky white substance secreted by plants. Latex is stored in latex cells or latex vessels. From the latex of *Hevea brasiliensis* (Rubber plant) rubber is prepared. Latex from *Jatropha* is the source of bio-diesel. Do you know which part of jatropa used in production of bio diesel.



*fig-14(a): Neem*



*fig-14(b): Jatropa*



*fig-14(c): Rubber plant*



### Do you know?

Chewing gum is a type of gum for chewing made dates back 5000 years. Modern chewing gum originally made of chicle, natural latex from plant. Whenever pollen grains enter in our body they cause allergy due to the presence of nitrogenous substances. These allergens cause skin allergy and asthma. Ex: Parthenium.



- *Do roots secrete?*

‘Brugaman’ a botanist proved from his experiments that the roots not only absorb fluid from soil, but returns a portion of their peculiar secretions back into it. We can see such instances in plants like apple where a single apple crop for 4 or 5 years continuously in the same soil, that fail to produce fruits. It will not give proper yield even if you use lot of fertilizers.

- *Do you think is there any relation between reduction in yielding and root secretions?*
- *Why do we get peculiar smell when you shift the potted plants?*

### Excretion Vs Secretion

Excretion and secretion are the same in nature. Since both are involved in passage or movement of materials. Both processes move and eliminate unwanted components from the body. Excretion is the removal of materials from a living being, while secretion is movement of material from one point to other point. So secretion is active while excretion is passive in nature. Humans excrete materials such as tears, urine, Carbon dioxide, and sweat while secretion on other hand, includes enzymes, hormones, and saliva. In plants too we find excretion through roots into its surroundings and falling off leaves and bark. Secretions occur in the plant body in form of latex, resins, gums etc.



#### Key words

*Creatinine, tubular fluid, peritubular, podocyte, hyper-osmotic interstitial fluids, glomerulus, PCT, DCT, afferent arteriole, efferent arteriole, calyces, micturation, urochrome, dialyser, heamodialysis, anticoagulant, alkaloid, biodiesel.*



#### What we have learnt

- Due to metabolism several harmful excretory products are formed and process of removing toxic waste from the body is called excretion.
- The human excretory system comprises kidneys, ureters, urinary bladder and urethra.
- Each kidney composed of a large number of uriniferous tubules or nephrons, which are structural and functional units of kidney.
- A nephron comprises glomerulus, bowman’s capsule, proximal convoluted tubule (PCT), Henle’s loop, Distal convoluted tubule (DCT) and collecting tubule.
- Formation of urine involves four stages. Glomerular filtration, tubular reabsorption, tubular secretion, and concentration of urine.

- Kidneys remove nitrogenous waste from body, maintains water balance (osmoregulation), salt content, pH, and blood pressure in human body.
- Dialysis machine is an artificial kidney which filters the blood to remove the metabolic wastes outside the body.
- Kidney transplantation is a permanent solution to renal failure patients.
- Different animals have different excretory organs e.g. amoeba-contractile vacuole, platyhelminthes-flame cells, annelida-nephridia, arthropoda-malpighian tubule, reptiles, birds and mammals-kidney.
- There are no special organs for excretion in plants. Plants store different waste materials in leaves, bark, roots, seeds which fall off from the plants.
- Plant metabolites are two types i) primary metabolites eg: proteins carbohydrates and fats. ii) secondary metabolites eg: alkaloids, tannins, latex and resins. These are economically important to us.
- Excretion is the removal of material from living beings where as secretion is movement of materials from one point to other.



### Improve your learning

1. What is meant by excretion?(AS1)
2. How are waste products excreted in amoeba?(AS1)
3. Name different excretory organs in human body and excretory material generated by them?(AS1)
4. Deepak said that 'Nephrons are functional units of kidneys' how will you support him?(AS1)
5. How plants manage the waste materials?(AS1)
6. Why do some people need to use a dialysis machine? Explain the principle involved in.(AS1)
7. What is meant by osmoregulation? How is it maintained in human body?(AS1)
8. Do you find any relationship between circulatory system and excretory system? What are they?(AS1)
9. Give reasons(AS1)
  - A. Always vasopressin is not secreted.
  - B. When urine is discharged, in beginning it is acidic in nature later it become alkaline.
  - C. Diameter of afferent arteriole is bigger than efferent arteriole.
  - D. Urine is slightly thicker in summer than in winter?
10. Write differences(AS1)
 

A. Functions of PCT and DCT	B. Kidney and artificial kidney
C. Excretion and secretion	D. Primary metabolites and secondary metabolites
11. There is a pair of bean-shaped organs P in the human body towards the back, just above the waist. A waste product Q formed by the decomposition of unused proteins in liver is brought into organ P through blood by an artery R. The numerous tiny filters S present in organ P clean the dirty blood goes into circulation through a vein T. The waste substance Q other waste salts and excess water form a yellowish liquid U which goes from organ P into a bag like structure V through two tubes W. This liquid is then thrown out of the body through a tube X.(AS1)
  - (a) What is (i) organ P and (ii) waste substance Q.
  - (b) Name (i) artery R and (ii) vein T
  - (c) What are tiny filters S known as?
  - (d) Name (i) liquid U (ii) structure V (iii) tubes W (iv) tube X.

12. The organ A of a person has been damaged completely due to a poisonous waste material B has started accumulation in his blood, making it dirty. In order to save this person's life, the blood from an artery in the person's arm is made to flow into long tubes made of substance E which are kept in coiled form in a tank containing solution F. This solution contains three materials G, H and similar proportions to those in normal blood. As the person's blood passes through long tubes of substance E, most of the wastes present in it go into solution. The clean blood is then put back into a vein in the person for circulation.(AS1)
  - (a) What is organ A?
  - (b) Name the wastes substance B.
  - (c) What are (i) E, and (ii) F?
  - (d) What are G, H and I?
  - (e) What is the process described above known as?
13. Imagine what happens if waste materials are not sent out of the body from time to time?(AS2)
14. To keep your kidneys healthy for long period what questions will you ask a nephrologist/urologist?(AS2)
15. What are the gum yielding trees in your surroundings? What procedure you should follow to collect gum from trees?(AS3)
16. Collect the information about uses of different kinds alkaloids, take help of Library? (AS4)
17. Draw a neat labeled diagram of L.S of kidney?(AS5)
18. Describe the structure of renal tubule with neatly labeled diagram.(AS5)
19. Draw a block diagram showing the path way of excretory system in human being.(AS5)
20. If you want to explain the process of filtration in kidney what diagram you need to draw.(AS5)
21. List out the things that makes you amazing in excretory system of human being.(AS6)
22. You read about 'Brain dead' in this chapter. What discussions would you like to have why you think so?(AS6)
23. We people have very less awareness about organ donation, to motivate people write slogans about organ donation?(AS7)
24. After learning this chapter what habits you would like to change or follow for proper functioning of kidneys?(AS7)

### Fill in the blanks

1. Earthworm excretes its waste material through \_\_\_\_\_.
2. The dark coloured outer zone of kidney is called \_\_\_\_\_.
3. The process of control of water balance and ion concentration within organism is called \_\_\_\_\_.
4. Reabsorption of useful product takes place in \_\_\_\_\_ part of nephron.
5. Gums and resins are the \_\_\_\_\_ products of the plants.
6. Bowman's capsule and tubule taken together make a \_\_\_\_\_.
7. The alkaloid used for malaria treatment is \_\_\_\_\_.
8. The principle involved in dialysis is \_\_\_\_\_.

9. Rubber is produced from \_\_\_\_\_ of *Hevea braziliensis*.  
 10. \_\_\_\_\_ invented dialysis machine.

### Choose the correct answer

- The excretory unit in the human excretory system is called ( )  
 (A) Neuron (b)nephron (c)nephridia (d)flame cell
- The excretory organ in cockroach ( )  
 (a) malphigian tubules (b) raphids (c) ureters (d) nephridia
- Which of the following is the correct path taken by urine in our body? ( )  
 (a) kidney ureters bladder urethra bladder (b) Kidney ureters bladder urethra  
 (c) Kidney ureters bladder urethra (d) Kidney bladder ureters urethra
- Malphigian tubes are excretory organs in ( )  
 (a) earth worm (b) house fly (c) flat worm (d) hen
- Major component of urine is ( )  
 (a) urea (b) sodium (c) water (d) creatine
- Special excretory organs are absent in ( )  
 (a) birds (b) amoeba (c) sponges (d) a and b
- Which of the following hormone has direct impact on urination? ( )  
 (a) adrenal (b) vasopressin (c) creatine (d) estrogen
- Amber colour to urine due to ( )  
 (a) urochrome (b) bilerubine (c) bileverdine (d) chlorides
- Sequence of urine formation in nephron is ( )  
 (a) Glomerular filtration, Tubular reabsorption, Tubular secretion  
 (b) Tubular reabsorption, Tubular secretion, Glomerular filtration,  
 (c) Tubular secretion, Glomerular filtration, Tubular reabsorption  
 (d) Tubular reabsorption, concentration of urine, Tubular secretion
- Part of the nephron that exists in outer zone of kidney. ( )  
 a) Loop of the henle b) PCT c) DCT d) Bowman's capsule
- After having lunch or dinner one can feel to pass urine, because of a ( )  
 a) stomach pressures on bladder b) solids become liquids  
 c) water content in food material d) spincter relaxation



## Annexure

### Organ donation - A gift for life

So many patients are waiting for suitable organ due to failure of vital organs. In Hyderabad where there are kidney transplantation facilities minimum 25 patients per hospital are waiting for kidney donors. Daily 10 - 100 people met with accident in our State. Out of them some people get brain dead. If we collect organs from brain dead patients in time, we can save minimum 5 peoples' life. But lack of awareness on organ donation those who are willing to donate organs and those who need organs do not get proper information even facilities are there. Medical personnels from government and private hospitals are not informing about brain dead Patients. If they inform in appropriate time it will be very useful to patients those who are waiting for organ donation. In Hyderabad, organ Transplantation facility is available only in two government hospitals (NIMS and Osmonia) and in more than 10 corporate hospitals. Other organs like cornea transplant organs like kidney, liver, heart, lungs, pancreas, skin, bone, intestines and eye (cornea) can transplanted from brain dead patients. The process of transplantation of organs from brain dead patients to another is called cadaver transplantation. If any person is willing to donate organs or in needy get organs. They must register their names in transplantation facility hospitals.

Collect information about voluntary organisation for organ donation and make a report on them.

There is very less awareness among people about organ donation. Society needs much awareness in organ donation, so that we can save many lives who are in need of different organs from donars for their survival. Instead of living in their memories, let us give them a chance to live in others for one more life.

### We can live even after death

#### Five organs of 18 year old youth donated

Dc correspondent, Hyderabad,  
20 June 2013

Five organs of 18 year old H.S. YASWANTH KUMAR were donated by his father H V Shiva kumar to the organ donation wing of jeevandan scheme on Thursday. Yaswanth had met an accident on June 15 while he was travelling in a shared Autorikshaw from Jagadgirigutta. He was rushed to Nizam Institute of Medical Sciences (NIMS). The Nuero surgeons at NIMS declared him brain dead. Jeevandan counsellors obtained the consent of Mr. Shiva kumar, who agreed to donate Yaswanth's kidneys, two heart valves, liver. These organs were retrieved and sent to various Hospitals for Transplantaion. Dr. Swarnalatha in-charge of Jeevandan scheme, said in a statement. Think how great Yaswanth's parents are?

