

Test Form No.
टेस्ट फॉर्म संख्या
677 NJ 4

GA-2014

SW - 1085086

Time Allowed : 2 Hours (For V.H. Candidates : 2 hrs. 40 min.)

Maximum Marks : 200

निर्धारित समय : 2 घण्टे (दृष्टिबाधित उम्मीदवारों के लिए : 2 घण्टे 40 मिनट)

अधिकतम अंक : 200

Read the following instructions carefully before you begin to answer the questions. This Booklet contains questions in English as well as in Hindi.

प्रश्नों के उत्तर देने से पहले नीचे लिखे अनुदेशों को ध्यान से पढ़ लें। इस पुस्तिका में प्रश्न अंग्रेजी तथा हिन्दी दोनों में दिये गये हैं।

INSTRUCTIONS TO CANDIDATES

- This Booklet contains 200 questions in all comprising the following three parts :
Part - I: General Intelligence and Reasoning (50 Questions)
Part - II: General Awareness (50 Questions)
Part - III: English Language and Comprehension (100 Questions)
- In questions set bilingually in English and Hindi, in case of discrepancy, the English version will prevail.
- All questions are compulsory and carry equal marks.
- The paper carries negative marking. 0.25 marks will be deducted for each wrong answer.
- Before you start to answer the questions you must check up this Booklet and ensure that it contains all the pages (1-24) and see that no page is missing or repeated. If you find any defect in this Booklet, you must get it replaced immediately.
- You will be supplied the Answer-Sheet separately by the Invigilator. You must complete and code the details of Name, Roll Number, Ticket Number and Test Form Number on Side-I of the Answer-Sheet carefully. You must also put your signature and Left-Hand thumb impression on the Answer-Sheet at the prescribed place before you actually start answering the questions. These instructions must be fully complied with, failing which, your Answer-Sheet will not be evaluated and you will be awarded 'ZERO' mark. (for VH candidates these details will be filled in by the scribe. However, all V.H. candidates must put their Left-Hand thumb impression at the space provided in the Answer-Sheet. In addition, those VH candidates who can sign should also put their signatures in addition to thumb impression.)
- Answers must be shown by completely blackening the corresponding ovals on Side-II of the Answer-Sheet against the relevant question number by Black/Blue Ball-Point Pen only. Answers which are not shown by Black/Blue Ball-Point Pen will not be awarded any mark.
- A machine will read the coded information in the OMR Answer-Sheet. In case the information is incomplete or different from the information given in the application form, the candidate will be awarded 'ZERO' mark.
- The Answer-Sheet must be handed over to the Invigilator before you leave the Examination Hall.
- Failure to comply with any of the above instructions will render a candidate liable to such action/penalty as may be deemed fit.
- The manner in which the different questions are to be answered has been explained at the back of this Booklet (Page No. 24), which you should read carefully before actually answering the questions.
- Answer the questions as quickly and as carefully as you can. Some questions may be difficult and others easy. Do not spend too much time on any question.
- In lieu of Question Nos. 44 to 50 relating to figural portions, alternate questions have been provided to be attempted by VH candidates only.
- No rough work is to be done on the Answer-Sheet. Space for rough work has been provided below the questions in Part I of this Booklet.
- "Mobile phones and wireless communication devices are completely banned in the examination halls/rooms. Candidates are advised not to keep mobile phones/any other wireless communication devices with them even switching it off, in their own interest. Failing to comply with this provision will be considered as using unfair means in the examination and action will be taken against them including cancellation of their candidature. Such candidates are also liable for debarment upto a period of five years and/or Criminal Prosecution."

उम्मीदवारों के लिए अनुदेश

- इस पुस्तिका में कुल 200 प्रश्न हैं, जिनमें निम्नलिखित तीन भाग शामिल हैं :
भाग-I : सामान्य बुद्धिमत्ता एवं तर्कशक्ति (50 प्रश्न)
भाग-II : सामान्य जानकारी (50 प्रश्न)
भाग-III : अंग्रेजी भाषा एवं परिज्ञान (100 प्रश्न)
- अंग्रेजी और हिन्दी में तैयार किए गए द्विभाषी प्रश्नों में कोई विसंगति होने की स्थिति में अंग्रेजी विवरण मान्य होगा।
- सभी प्रश्न अनिवार्य हैं तथा सबके बराबर अंक हैं।
- प्रश्न-पत्र में नकारात्मक अंकन होगा। हर गलत उत्तर के लिए 0.25 अंक काटा जाएगा।
- प्रश्नों के उत्तर देने से पहले आप इस पुस्तिका की जाँच करके देख लें कि इसमें पूरे पृष्ठ (1-24) हैं तथा कोई पृष्ठ कम या दुबारा तो नहीं आ गया है। यदि आप इस पुस्तिका में कोई त्रुटि पाएँ, तो तत्काल इसके बदले दूसरी पुस्तिका ले लें।
- निरीक्षक द्वारा आपको उत्तर-पत्रिका अलग से दी जाएगी। उत्तर-पत्रिका के Side-I में नियमावली के अनुसार ध्यानपूर्वक अपना नाम, रोल नम्बर, टिकट नम्बर और टेस्ट फॉर्म संख्या अवश्य लिखें। प्रश्नों के उत्तर वास्तव में शुरू करने से पहले उत्तर-पत्रिका पर निर्धारित स्थान में आप अपने हस्ताक्षर एवं बाएँ हाथ के अंगूठे का निशान भी अवश्य लगाएँ। उपर्युक्त अनुदेशों का पूरी तरह अनुपालन किया जाए, अन्यथा आपकी उत्तर-पत्रिका को जाँचा नहीं जाएगा और 'शून्य' अंक दिया जाएगा। (दृष्टिबाधित उम्मीदवारों के लिए यह विवरण लिपिक द्वारा भरा जाए। परन्तु सभी दृष्टिबाधित उम्मीदवार उत्तर-पत्रिका में निर्धारित स्थान पर अपने बाएँ हाथ के अंगूठे का निशान अवश्य लगाएँ। इसके अतिरिक्त, जो दृष्टिबाधित उम्मीदवार हस्ताक्षर कर सकते हैं, वे अंगूठे के निशान के अलावा अपने हस्ताक्षर भी कर दें।)
- उत्तर-पत्रिका में सभी उत्तर Side-II में प्रश्न संख्या के सामने दिए गए सम्बन्धित अण्डाकार खानों को केवल काले/नीले बॉल-पॉइंट पेन से पूरी तरह काला करके दिखाएँ। जो अण्डाकार खाने काले/नीले बॉल-पॉइंट पेन से नहीं भरे जाएँगे, उनके लिए कोई अंक नहीं दिया जाएगा।
- ओ.एम.आर. उत्तर-पत्रिका में भरी गई कूट सूचना को एक मशीन पढ़ेगी। यदि सूचना अपूर्ण है अथवा आवेदन प्रपत्र में दी गई सूचना से भिन्न है, तो ऐसे उम्मीदवार को 'शून्य' अंक दिया जाएगा।
- परीक्षा भवन छोड़ने से पहले उम्मीदवार को उत्तर-पत्रिका निरीक्षक के हवाले कर देनी चाहिए।
- ऊपर के अनुदेशों में से किसी एक का भी पालन न करने पर उम्मीदवार पर विवेकानुसार कार्यवाही की जा सकती है या दण्ड दिया जा सकता है।
- विभिन्न प्रश्नों के उत्तर देने की विधि इस पुस्तिका के पीछे (पृष्ठ संख्या 24) में छपे हुए निर्देशों में दे दी गई है; इसे आप प्रश्नों के उत्तर देने से पहले ध्यानपूर्वक पढ़ लें।
- प्रश्नों के उत्तर जितनी जल्दी हो सके तथा ध्यानपूर्वक दें। कुछ प्रश्न आसान तथा कुछ कठिन हैं। किसी एक प्रश्न पर बहुत अधिक समय न लगाएँ।
- आकृति से सम्बन्धित प्रश्न संख्या 44 से 50 के बदले में केवल दृष्टिबाधित उम्मीदवारों द्वारा हल किए जाने के लिए वैकल्पिक प्रश्न दिए गए हैं।
- कोई रफ़ कार्य उत्तर-पत्रिका पर नहीं करना है। रफ़ कार्य के लिए स्थान इसी पुस्तिका के भाग I के प्रश्नों के नीचे दिया गया है।
- "परीक्षा हॉलों/ कमरों में मोबाइल फोन तथा बेतार संचार साधन पूरी तरह निषिद्ध हैं। उम्मीदवारों को उनके अपने हित में सलाह दी जाती है कि मोबाइल फोन / किसी अन्य बेतार संचार साधन को स्विच ऑफ़ करके भी अपने पास न रखें। इस प्रावधान का अनुपालन न करने को परीक्षा में अनुचित उपायों का प्रयोग माना जाएगा और उनके विरुद्ध कार्रवाई की जाएगी, उनकी अभ्यर्थिता रद्द कर देने सहित। ऐसे उम्मीदवारों को पाँच वर्ष के लिए प्रतिबंधित भी किया जा सकता है और/ या उन पर आपराधिक अभियोजन चलाया जा सकता है।"

इस पुस्तिका की सील तब तक न खोलें जब तक कहा न जाए।

SSC Stenographers (Grade 'C' and 'D') Examination 2014

Held on: 14.09.2014 (Morning Session)

PART - I

GENERAL INTELLIGENCE & REASONING

Directions : In questions no. 1 to 6, select the related letter/word/number from the given alternatives.

- Bee : Hive :: Dog : ?
(A) Kennel (B) Coop
(C) Stable (D) Nest
- Star : Constellation :: Soldier : ?
(A) War (B) Bravery
(C) School (D) Regiment
- ABCD : ZYXW :: EFGH : ?
(A) XYZW (B) TSRQ
(C) VUTS (D) PONM
- ELJH : MTRP :: UBZX : ?
(A) CJHF (B) CIGE
(C) CBYA (D) DJIG
- 8 : 81 :: 64 : ?
(A) 125 (B) 250 (C) 625 (D) 525
- BDEG : MOPR :: ? : oqrt
(A) DFGI (B) dfgi (C) dFgi (D) Dfgi

Directions : In questions no. 7 to 12, find the odd word/letters/number pair from the given alternatives.

- (A) 63 (B) 108 (C) 56 (D) 45
- (A) Guitar (B) Drums
(C) Violin (D) Mandolin
- (A) 125 (B) 343 (C) 729 (D) 1131
- (A) DEB (B) RTP
(C) HIF (D) NOL
- (A) QSTU (B) IKLM
(C) GHJK (D) BDEF
- (A) Topaz (B) Ruby
(C) Pearl (D) Diamond
- Which word comes third in the dictionary ?
seize, season, secret, seed
(A) seize (B) season
(C) secret (D) seed
- Which word comes last in the dictionary ?
bonanza, beautiful, balance, bottle
(A) bonanza (B) beautiful
(C) balance (D) bottle

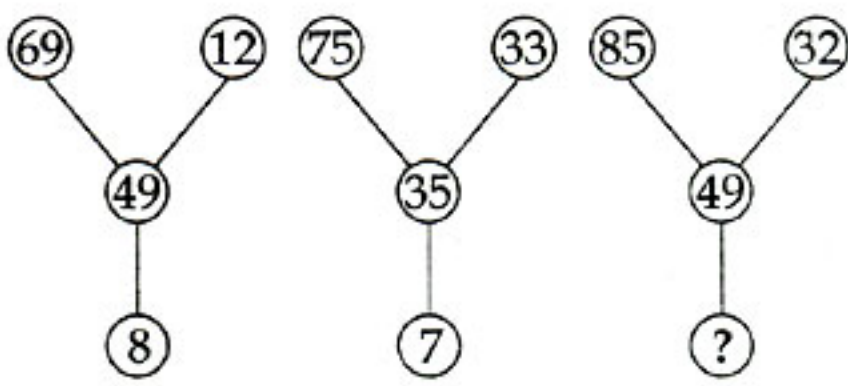
Directions : In questions no. 15 to 17, a series is given with one term missing. Choose the correct alternative from the given ones that will complete the series.

- ZTO, YSN, XRM, ?
(A) WPL (B) BHM
(C) WQL (D) WTL
- AFC, BHD, CJE, ?
(A) DLF (B) DHF
(C) DLJ (D) DLH
- 6, 12, 20, 30, 42, ?
(A) 48 (B) 56 (C) 50 (D) 46
- TOOLS is written as STOOL and WORDS is written as :
(A) ROWDS (B) SWORD
(C) WORSD (D) SROWD
- Sushma scored more than Deepak. Rushil scored as much as Ansh. Samhita scored less than Vasavi. Deepak scored more than Rushil. Vasavi scored less than Ansh. Who scored the lowest ?
(A) Samhita (B) Deepak
(C) Ansh (D) Vasavi
- SELECTION is coded as 856539742 SESSION is coded as :
(A) 8688472 (B) 8588742
(C) 8588427 (D) 8397428
- Identify the wrong number in the given series.
21, 45, 72, 36, 12, 54, 27
(A) 45 (B) 36 (C) 12 (D) 27
- In a house there are eight 40 watt bulbs which are burning for 5 hrs a day and four 80 watt bulbs burning for 10 hrs a day. If electricity costs ₹ 2 per kilowatt per hour, what is the monthly bill ?
(A) ₹ 216 (B) ₹ 268
(C) ₹ 288 (D) ₹ 328

SPACE FOR ROUGH WORK

23. Which one of the given responses can be added to all the given letters to make meaningful words ?
 SL ____
 PR ____
 TR ____
 BR ____
 S ____
 (A) _een (B) _eep (C) _ick (D) _our

Directions : In questions no. 24 to 26, select the missing number from the given alternatives.

24. 
 (A) 9 (B) 3 (C) 4 (D) 5

25.

7	3	3
3	5	8
6	9	?
<hr/>		
126	135	168

 (A) 8 (B) 7 (C) 6 (D) 9

26.

7	9	4
6	8	?
8	2	8
<hr/>		
336	144	192

 (A) 5 (B) 6 (C) 7 (D) 4

27. Raju travels 8 km to the north, turns left and travels 4 kms, and then again turns right and covers another 5 kms. Then he turns to right and travels for 4 kms. How far is he from the starting point ?
 (A) 9 km (B) 13 km
 (C) 17 km (D) 21 km

28. Solve the equation using the below given values and answer in numeric values.
 $\square = 10$ $\diamond = 6$ $\triangle = 15$ $\circ = 3$ $\square = 9$
 $(\triangle + \square) \div \circ$
 (A) 6 (B) 12 (C) 8 (D) 10

29. In a row of houses, the house with a terrace is 25th from left end and 4th from the right end. How many houses are there in the row ?
 (A) 26 (B) 27 (C) 28 (D) 29

30. 6 persons are playing a card game. Suresh is facing Raghubir who is left of Ajay and to the right of Pramod, Ajay is to the left of Dhiraj. Yogendra is to be left of Pramod. If Dhiraj exchanges his seat with Yogendra and Pramod with Raghubir, who will be sitting to the left of Dhiraj ?
 (A) Yogendra (B) Raghubir
 (C) Suresh (D) Ajay

31. Kunal starts journey straight towards east by car. After going 75 km, he turns his car to the left and goes 25 km straight. Again he turns to the left, goes a distance of 40 km straight, again he turns to the left and moves a distance of 25 km. How far is he from the starting point ?
 (A) 35 km (B) 25 km
 (C) 50 km (D) 150 km

32. If 'x' stands for '+', '÷' stands for 'x', '-' stands for '+' then '+' for '-' which of the following is correct ?
 (A) $40 \times 8 \div 10 + 5 - 8 = 123$
 (B) $40 \div 8 - 10 \times 5 + 8 = 314$
 (C) $40 \div 8 - 10 \times 5 + 8 = -35$
 (D) $40 \div 8 + 10 \times 5 - 8 = 47$

In question nos. 33 and 34 one or two statements are given followed by two Conclusions I and II. You have to consider the statements to be true, even if it seems to be at variance from commonly known facts. You are to decide which of the given conclusions can definitely be drawn from the given statements. Indicate your answer.

33. **Statements :** All snakes are fishes.
 All crocodiles are snakes.
Conclusions : (I) All crocodiles are fishes.
 (II) All snakes are crocodiles.
 (A) Only conclusion (I) follows.
 (B) Only conclusion (II) follows.
 (C) Both conclusions (I) and (II) follows.
 (D) Neither conclusion (I) nor (II) follow.

SPACE FOR ROUGH WORK

34. Statements :

- (I) Maya runs faster than Swati.
 (II) Lily runs faster than Maya.
 (III) Swati runs faster than Lily.

If first two statements are true then third statement is :

- (A) True (B) False
 (C) Uncertain (D) Vague

Directions : In questions no. 35 and 36, you are given the address of a town followed by four alternatives. Of these, only one matches while the others have some mistakes. You have to choose exactly the same as the given one as your answer.

35. Ms. Aruna Devi,
 418/3 New Housing Colony,
 Rajpur Road,
 Dehradun 248 001

- (A) Ms. Aruna Devi,
 418/3 New Housing Colony,
 Rajpur Road,
 Dehradun 248 101
 (B) Miss. Aruna Devi,
 418/3 New Housing Colony,
 Rajpur Road,
 Dehradun 248 001
 (C) Ms. Aruna Devi,
 418/3 New Housing Colony,
 Rajpur Road,
 Dehradun 248 001
 (D) Ms. Aruna Devi,
 418/3 New Housing Colony,
 Raipur Road,
 Dehradun 248 001

36. Mrs. J Simpson
 Braun & Braun Co. Ltd.
 12, Kenneth Apartments
 Vasant Vihar,
 New Delhi - 110020

- (A) Mrs. J. Simpson
 Bruan & Bruan Co. Ltd.
 12, Kenneth Apartments
 Vasant Vihar,
 New Delhi - 110020
 (B) Mrs. J Simpson
 Braun & Braun Co. Ltd.
 12, Keneth Apartments
 Vasant Vihar,
 New Delhi.
 (C) Mrs. J Simpson
 Braun & Braun Co. Ltd.
 12, Kenneth Apartments
 Vasant Vihar,
 New Delhi - 110020
 (D) Mrs. J Simpson
 Braun & Braun Co. Ltd.
 12, Kenneth Apartment
 Vasant Vihar
 New Delhi - 110002

Direction : Answer the question no. 37 and 38, based on the following. Below are given some Roll Numbers of candidates registered at different centres for an examination. The first two digits from the left stand for the centre code and the next four for the serial number of the candidates registered at the centre.

061391 041631 031863 069234
 024268 046198 059721 011432
 051491 010028 020063 046523
 011432 050451 029378 040028

- 37.** In which centre does the serial number 9234 occur?
 (A) 02 (B) 06 (C) 01 (D) 05
38. How many candidates belong to centre 04?
 (A) 4 (B) 3 (C) 6 (D) 2
39. When some one directly criticises your behaviour, how will you behave?
 (A) Become upset about it.
 (B) Carefully listen to their opinion.
 (C) Think of ways to change your behaviour.
 (D) Ready to close up and stop listening.

SPACE FOR ROUGH WORK

40. When you feel tensions rising between you and your employer ?
 (A) Lash out at him your uncontrolled temper.
 (B) Keep a cool conduct.
 (C) Be afraid to disagree with your employer.
 (D) React to harsh criticism in an emotional manner.
41. You are asked to attend a social function at your friends' house.
 (A) You accept just to please your friend.
 (B) You are not willing because you dislike such gathering.
 (C) You may attend the function to maintain the relationship.
 (D) You cannot spend time for this kind of function.
42. Suppose you are a team leader and some discussion arose.
 (A) You listen to other point of view.
 (B) You consider your ideas are supreme.
 (C) You would be reluctant to accept the views of others.
 (D) You believe in over all participation.
43. Either he is educated or he is left out.
 (A) He is not left out.
 (B) He is not educated.
 (C) He is not educated and he is left out.
 (D) He is not educated and he is not left out.
44. Out of 40 students, 16 go to Kannada and 27 to English classes. If 5 students overlap, select the Venn diagram which shows :
 (1) No. of students who neither attend Kannada or English classes.
 (2) No. of students who attend only English or only Kannada classes.
 A = Kannada classes B = English classes
- | | | | | | | | |
|-----|-----|-----|-----|----|----|----|----|
| A | B | A | B | A | B | A | B |
| 6 | 5 | 11 | 5 | 11 | 5 | 11 | 5 |
| 0 | 22 | 2 | 22 | 5 | 22 | 0 | 24 |
| (A) | (B) | (C) | (D) | | | | |

45. Select the Venn diagram that correctly shows the relationship :
 Coffee : Sugar : Tea
- | | | | |
|-----|-----|-----|-----|
| | | | |
| (A) | (B) | (C) | (D) |
46. A piece of paper is folded and cut as shown below in the question figures. From the given answer figures, indicate how it will appear when opened.
Question figures
- | | | | |
|-----------------------|-----|-----|-----|
| | | | |
| Answer figures | | | |
| | | | |
| (A) | (B) | (C) | (D) |
47. Which answer figure will complete the question figure?
Question figure
- | | | | |
|-----------------------|-----|-----|-----|
| | | | |
| Answer figures | | | |
| | | | |
| (A) | (B) | (C) | (D) |
48. From the given answer figures, select the one in which the question figure is hidden/embedded.
Question figure
- | | | | |
|-----------------------|-----|-----|-----|
| | | | |
| Answer figures | | | |
| | | | |
| (A) | (B) | (C) | (D) |

SPACE FOR ROUGH WORK

49. A word is represented by only one set of numbers as given in any one of the alternatives. The sets of numbers given in the alternatives are represented by two classes of alphabets as in the 2 matrices given below. The columns and rows of Matrix I are numbered from 0 to 4 and that of Matrix II from 5 to 9. A letter from these matrices can be represented first by its row and next by column number. For e.g. A can be represented by 12, 24 etc. R can be represented by 57, 76 etc. Identify the set for the given words: 'EAST'

MATRIX-I

	0	1	2	3	4
0	A	E	S	T	H
1	T	H	A	E	S
2	E	S	T	H	A
3	H	A	E	S	T
4	S	T	H	A	E

MATRIX-II

	5	6	7	8	9
5	P	O	R	K	L
6	K	L	P	O	R
7	O	R	K	L	P
8	L	P	O	R	K
9	R	K	L	P	O

(A) 32, 31, 02, 04

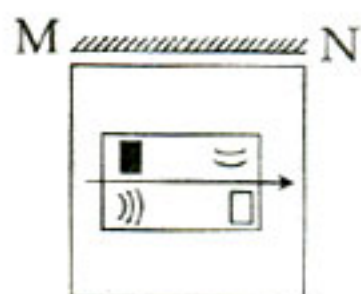
(B) 20, 43, 33, 11

(C) 13, 12, 14, 10

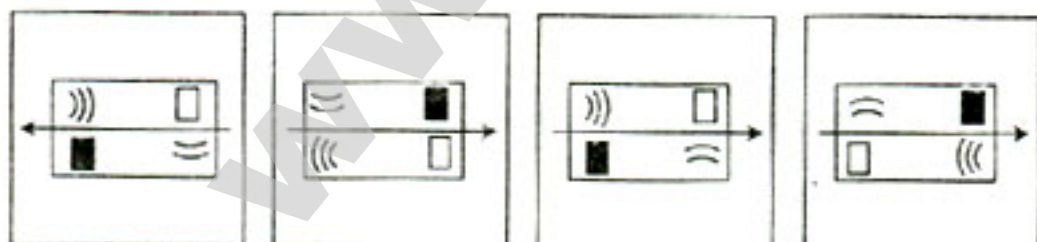
(D) 44, 32, 21, 03

50. If a mirror is placed on the line MN, then which of the answer figure is the right image of the given figure?

Question figure



Answer figures



(A)

(B)

(C)

(D)

FOR VISUALLY HANDICAPPED CANDIDATES ONLY

Directions : In questions no. 44 and 45, select the related letter/word/number from the given alternatives.

44. Plant : Botany :: ?

- (A) Liver : Cardiology
- (B) Cell : Cytology
- (C) Heart : Psychology
- (D) Fossils : Chemistry

45. 81 : 27 :: 93 : ?

- (A) 39
- (B) 63
- (C) 31
- (D) 13

46. If Ram is the son of the brother of the father of Shyam then Ram is Shyam's :

- (A) Nephew
- (B) Uncle
- (C) Cousin
- (D) None of the above

47. Find the odd number from the given alternatives.

- (A) 5, 25, 125
- (B) 4, 16, 128
- (C) 3, 9, 27
- (D) 6, 36, 216

48. Choose the correct alternative from the given ones that will complete the series.

0, 2, 6, 12, 20, 30, ?

- (A) 42
- (B) 40
- (C) 37
- (D) 35

49. Find the wrong number in the given series :

216, 343, 516, 729, 1000

- (A) 216
- (B) 729
- (C) 516
- (D) 343

50. From the given alternative words, select the word which cannot be formed using the letters of the given word :

PROFESSIONALISM

- (A) MISSION
- (B) LESSON
- (C) SESSION
- (D) SENSATION

SPACE FOR ROUGH WORK

PART - II

GENERAL AWARENESS

51. When the National Emergency is declared, the following remain suspended ?
 (A) Fundamental Duties
 (B) Fundamental Rights
 (C) Directive Principles of States Policy
 (D) Judiciary
52. Fuse wire should have :
 (A) low resistance, high melting point
 (B) low resistance, low melting point
 (C) high resistance, high melting point
 (D) high resistance, low melting point
53. Which of the following statements is false ?
 (A) The magnitude of a vector is always a scalar.
 (B) The total path length is always equal to the magnitude of the displacement vector of a particle.
 (C) The average speed of a particle is either greater or equal to the magnitude of the average velocity of the particle over the same time interval.
 (D) Three vectors not lying in a plane can never add up to give a null vector.
54. Excess of total expenditure over total receipts is known as :
 (A) Budgetary deficit (B) Revenue deficit
 (C) Fiscal deficit (D) Primary deficit
55. The study of tissues distribution in stem is performed under :
 (A) Anatomy (B) Histology
 (C) Cytology (D) Ecophysiology
56. Expand the term CD-ROM :
 (A) Compactable Data Read only Memory
 (B) Compact Data Read only Memory
 (C) Compactable Disk Read only Memory
 (D) Compact Disk Read only Memory
57. 'Revolver' was discovered by :
 (A) Faraday (B) Colt
 (C) Marconi (D) Sholtz
58. Point out from the following the women President of India :
 (A) Pratibha Patil
 (B) Sarojini Naidu
 (C) Jaya Lalitha
 (D) Vijaylakshmi Pandit
59. Rate of photosynthesis is maximum in :
 (A) Red light (B) Blue light
 (C) Green light (D) None
60. Which discovery is associated with the name of Marie Curie ?
 (A) Protino
 (B) Artificial transmutation
 (C) Radio activity
 (D) Photo electric effect
61. In which year was the Quit India movement launched ?
 (A) 1938 (B) 1948 (C) 1942 (D) 1944
62. Which of the following is a private Sector Bank ?
 (A) Vijaya Bank
 (B) IDBI Bank Ltd.
 (C) UCO Bank
 (D) Punjab National Bank
63. The solubility of iodine in water is increased if it is mixed with :
 (A) alcohol (B) chloroform
 (C) sodium hydroxide (D) potassium iodide
64. Digboi Oil Refinery is located in the state of :
 (A) Gujarat (B) Bihar
 (C) Punjab (D) Assam
65. Buddhist Scriptures are contained in 'Tri-Pitakas'. What is the meaning of 'Pitaka' ?
 (A) Box (B) Book
 (C) Baskets (D) Bank

66. Who composed the famous song "Sare Jahan Se Achha" ?
 (A) Jaidev
 (B) Mohammad Iqbal
 (C) Bankim Chandra Chatterjee
 (D) Rabindranath Tagore
67. The Longest river of Europe is :
 (A) Volga (B) Danube
 (C) Rhone (D) Rhine
68. Who acts as the Chairman of the National Development Council ?
 (A) Minister of Planning
 (B) Secretary of the Planning Commission
 (C) Minister of State for Planning
 (D) Prime Minister
69. Unemployment which occurs when workers move from one job to another job is known as :
 (A) Seasonal unemployment
 (B) Frictional unemployment
 (C) Cyclical unemployment
 (D) Technological unemployment
70. The thickest pin in a three pin plug is :
 (A) neutral pin (B) earth pin
 (C) live pin (D) terminal pin
71. Who is referred as the "Machiavelli of the East" ?
 (A) Kautilya (B) Manu
 (C) Kamandaka (D) Aryabhata
72. Noble Prize is **not** given in the field of :
 (A) Physics
 (B) Chemistry
 (C) Medicine
 (D) Civil Administration
73. Agmark is :
 (A) A co-operative for egg production
 (B) A regulated agricultural market
 (C) An agricultural marketing society
 (D) A quality guarantee stamp for commodities like eggs, ghee, honey etc.
74. Which one of the following is directly elected in India ?
 (A) President of India
 (B) Vice President of India
 (C) Member of Legislative Assembly
 (D) Member of Rajya Sabha
75. White goods are :
 (A) Basic raw materials
 (B) Cosmetic articles
 (C) Goods imported from the western countries
 (D) Durable consumption goods
76. If the President wishes to resign, he should submit his/her resignation in writing addressed to :
 (A) The Speaker of Lok Sabha
 (B) Chief Justice of India
 (C) The Prime Minister of India
 (D) None of the above
77. "Give me blood, I will give you freedom". These words are attributed to :
 (A) Bhagat Singh
 (B) Veer Savarkar
 (C) Khudiram Bose
 (D) Subhash Chandra Bose
78. Which part of potato is edible ?
 (A) Leaf (B) Stem
 (C) Fruit (D) Flower
79. Kaiga thermal power plant is in :
 (A) Tamil Nadu (B) Karnataka
 (C) Andhra Pradesh (D) Kerala
80. Who established the Brahma Samaj ?
 (A) Dayananda Sarasvati
 (B) Ranade
 (C) Swami Vivekananda
 (D) Raja Ram Mohan Rai
81. Wood is a common name of :
 (A) Cambium
 (B) Primary Phloem
 (C) Secondary Xylem
 (D) Secondary Phloem

82. Which one amongst the following has conferred the honorary degree of D.Litt. on U.N. Secretary General, Ban-Ki-Moon ?
 (A) Lal Bahadur Shastri Sanskrit University
 (B) G.G.S. Indraprastha University
 (C) Jamia Millia Islamia University
 (D) I.I.T. Delhi
83. Formic acid can easily be identified by its :
 (A) sweet smell (B) bad smell
 (C) pungent smell (D) repelling smell
84. Acid rain is caused due to pollution of atmosphere by :
 (A) Oxides of carbon and nitrogen
 (B) Oxides of nitrogen and sulphur
 (C) Oxides of nitrogen and phosphorous
 (D) None of these
85. The Suez canal connects :
 (A) Mediterranean Sea and Red Sea
 (B) Mediterranean Sea and Black Sea
 (C) Red Sea and Arabian Sea
 (D) Red Sea and Black Sea
86. The lift of an aeroplane is based on :
 (A) Toricellis theorem
 (B) Bernoulli's principle
 (C) Law of gravitation
 (D) Coulomb's law
87. When was the first Battle of Panipat fought ?
 (A) 1526 A.D. (B) 1556 A.D.
 (C) 1761 A.D. (D) 1857 A.D.
88. Biggest Island in the world is :
 (A) Greenland (B) Lakshadweep
 (C) Nicobar (D) Japan
89. Which of the following state does not share its border with Pakistan :
 (A) Jammu and Kashmir (B) Rajasthan
 (C) Gujarat (D) Madhya Pradesh
90. In personal computers the CPU and other devices are mounted on a single board called :
 (A) Mother board (B) Circuit board
 (C) Bread board (D) Connection board
91. Which of the following Rivers of India does not originate from the Western Ghats ?
 (A) Mahanadi (B) Cauveri
 (C) Bhadra (D) Krishna
92. Cocaine is :
 (A) Nerve depressant
 (B) Nerve initiator
 (C) Nerve stimulant
 (D) Nerve impulse initiator
93. In soil, nitrites are converted into nitrates by :
 (A) Nitrosomonas (B) Pseudomonas
 (C) Nitrobacter (D) Azotobacter
94. Who wrote 'A Haunted House' ?
 (A) Bret Harte (B) James Joyce
 (C) Thomas Hardy (D) Virginia Woolf
95. Golden Temple is situated in :
 (A) New Delhi (B) Agra
 (C) Amritsar (D) Mumbai
96. Gold is made hard by alloying with :
 (A) Iron (B) Silver
 (C) Aluminium (D) Copper
97. The most peculiar feature shown by all living organism is :
 (A) Excretion
 (B) Respiration
 (C) Cellular structure
 (D) Autotrophic nature
98. Transport of oxygen in human body takes place in :
 (A) Body fluids (B) Blood
 (C) Body cavity (D) Alimentary canal
99. Which state of the Country is not the producer of Cotton ?
 (A) Maharashtra (B) Gujarat
 (C) Madhya Pradesh (D) Bihar
100. The world famous 'Khajuraho' Temple is in :
 (A) Gujarat (B) Karnataka
 (C) Orissa (D) Madhya Pradesh

PART - III

ENGLISH LANGUAGE AND COMPREHENSION

Directions : In Questions No. 101 to 110, some parts of the sentences have errors and some are correct. Find out which part of a sentence has an error and blacken the oval [●] corresponding to the appropriate letter (A), (B), (C). If a sentence is free from error, blacken the oval corresponding to (D) in the Answer Sheet.

101. According to my opinion/ she is the best/
(A) (B)
candidate for the job/ No error
(C) (D)
102. By and large/ people are judged by/
(A) (B)
how much they earn/ No error
(C) (D)
103. He is working/ on his project/
(A) (B)
when his computer crashed/ No error
(C) (D)
104. The advertisement/ attracted all the/ passer - bys/
(A) (B) (C)
No error
(D)
105. If the bus hadn't/ broken down/
(A) (B)
we will be at home now/ No error
(C) (D)
106. Except for your help/ I would have failed/
(A) (B)
to complete this project/ No error
(C) (D)
107. I am/ fond off/ sweets/ No error
(A) (B) (C) (D)
108. The clerks/ in this office/ work hardly/ No error
(A) (B) (C) (D)
109. Mrs. Rao and her family/ left/
(A) (B)
this place a month ago/ No error
(C) (D)
110. Most of the patients/
(A)
who were diagnosed before 1996/
(B)
as having AIDS has already died/ No error
(C) (D)

Directions : In Questions No. 111 to 115, sentences are given with blanks to be filled in with an appropriate word(s). Four alternatives are suggested for each question. Choose the correct alternative out of the four and indicate it by blackening the appropriate oval [●] in the Answer Sheet.

111. Smoking in public has been _____ by law.
(A) disallowed (B) forbidden
(C) prohibited (D) prevented
112. Throughout the years, Rita has _____ a style of her own.
(A) devolve (B) resolve
(C) evolved (D) dissolve
113. You will have to account for all the _____ incurred during your tenure.
(A) looses (B) lost (C) losses (D) lose
114. Do not be _____ of other's progress.
(A) fascinate (B) jealous
(C) proud (D) possess
115. His act was not _____ by anyone.
(A) approve (B) approved
(C) approval (D) approving

Directions : In Questions No. 116 to 120 out of the four alternatives, choose the one which best expresses the meaning of the given word and mark it in the Answer Sheet

116. Baffle :
(A) Sorry (B) Reveal
(C) Confuse (D) Deceive
117. Banish :
(A) Expel (B) Polish
(C) Force (D) Trick
118. Sedentary :
(A) Fixed (B) Still
(C) Inactive (D) Unmoving
119. Transient :
(A) Irregular (B) Temporary
(C) Ephemeral (D) Unstable
120. Segregate :
(A) Disunite (B) Separate
(C) Disconnect (D) Seclude

Directions : In Questions No. 121 to 125, choose the word opposite in meaning to the given word and mark it in the Answer Sheet.

121. Rejoice :
(A) Dislike (B) Refuse
(C) Deceive (D) Lament

122. Fit:
 (A) Unhealthy (B) Harmful
 (C) Delicate (D) Undesirable

123. Predominant:
 (A) Superior (B) Extreme
 (C) Ordinary (D) Insignificant

124. Distinctive:
 (A) Recognizable (B) Vague
 (C) Similar (D) Unique

125. Desecrated:
 (A) Defile (B) Pollute
 (C) Respect (D) Impious

Directions : In questions No. 126 to 130, four alternatives are given for the Idiom/Phrase underlined in the sentence. Choose the alternative which best expresses the meaning of the Idiom/Phrase and mark it in the Answer Sheet.

126. John gets the right answer before anyone else. He's really quick on the trigger.

- (A) quick to respond (B) making mistakes
 (C) good at handling guns (D) a fast runner

127. To smell a rat.

- (A) To discover a new trend.
 (B) To suspect something wrong.
 (C) Smell of a rat.
 (D) To hope even when there is no reason for it.

128. The two brothers are at daggers drawn.

- (A) on good terms
 (B) hostile to each other
 (C) indifferent to each other
 (D) deal in daggers

129. He charged into the class.

- (A) came slowly (B) came rushing in
 (C) took charge of the class (D) charged the class

130. If you want to join army, you need to be as fit as a fiddle.

- (A) brave (B) lean
 (C) skillful (D) healthy

Directions : In Questions No. 131 to 135, the 1st and the last sentences of the passage are numbered 1 and 6. The rest of the passage is split into four parts and named P, Q, R and S. These four parts are not given in their proper order. Read the sentence and find out which of the four combinations is correct. Then find the correct answer and indicate it by blackening the appropriate Oval [●] in the Answer Sheet.

131. 1. The minister advanced towards the podium
 P. Two armed youths had entered the hall through a side door
 Q. People began running for cover
 R. Suddenly, a loud cry was heard
 S. They began firing randomly at the crowd
 6. One of the guards who had been shot at, slumped to the ground.
 (A) QSPR (B) PRQS
 (C) RPSQ (D) SRPQ

132. 1. 'Flash mob' is originally a disparaging term for especially incorrigible Australian female convicts.
 P. For years these were mostly sweet, goofy events.
 Q. A New York journalist came up with a cross between performing art and satire.
 R. This phrase got another, unrelated life in 2003.
 S. In which 100 or more people would suddenly converge in a public place
 6. The "mobs" would briefly sing or dance, then disperse
 (A) RQSP (B) PQRS
 (C) QRSP (D) PRQS

133. 1. People
 P. do not think
 Q. who live in cities and towns
 R. any connection
 S. that they have
 6. with the forest
 (A) QPSR (B) PQSR
 (C) PSRQ (D) QPRS

134. 1. Lying in bed would be
 P. an altogether perfect
 Q. if only one had a coloured pencil
 R. and supreme experience
 S. long enough
 6. to draw on the ceiling
 (A) SPRQ (B) SPQR
 (C) PRSQ (D) PRQS

135. 1. India is a land of villages.
 P. The poor are extremely poor, living in wretched conditions.
 Q. In fact, about three-fourth of our people live in rural areas.
 R. Unfortunately, the state of things there is as bad as possible
 S. So there can be no improvement of the country unless the villages are improved first
 6. So they drag on a miserable existence, more dead than alive.
- (A) P R S Q (B) Q S P R
 (C) S P Q R (D) R S P Q

Directions : In Questions No. 136 to 145 a sentence has been given in Active/Passive Voice. Out of the four which one expresses the same sentence in Passive/Active Voice and mark your answer in the Answer Sheet.

136. Why were you punished by him ?
 (A) Why did he punish you ?
 (B) For what purpose did he punish you ?
 (C) Why have you been punished by him ?
 (D) What is the cause he punished you ?
137. The family chose a kitten as a pet.
 (A) A kitten was chosen by the family to have as a pet.
 (B) A kitten will be chosen as a pet by the family.
 (C) A kitten is chosen to have as a pet by the family.
 (D) A kitten was chosen by the family as a pet.
138. Our army has been defeated.
 (A) The enemy has been defeated by our army.
 (B) The enemy has defeated our army.
 (C) The enemy have been defeated by our army.
 (D) The enemy have defeated our army.
139. A new hospital has been built near the airport.
 (A) They build a new hospital near the airport.
 (B) They have built a new hospital near the airport.
 (C) They are building a new hospital near the airport.
 (D) They built a new hospital near the airport.
140. We are living a hard life.
 (A) We are lived by a hard life.
 (B) A hard life was being lived by us.
 (C) A hard life is being lived by us.
 (D) The hard life was lived by us.
141. The girl was singing a song.
 (A) A song had been sung by the girl.
 (B) A song has been sung by the girl.
 (C) A song was sung by the girl.
 (D) A song was being sung by the girl.

142. Maharashtrians speak Marathi.
 (A) Marathi has been spoken by Maharashtrians.
 (B) Marathi have been spoken by Maharashtrians.
 (C) Marathi is spoken by Maharashtrians.
 (D) Marathi was spoken by Maharashtrians.
143. Boys play football.
 (A) Football is being played by boys.
 (B) Football is played by boys.
 (C) Football played by boys.
 (D) Football was played by boys.
144. It is time to close down the business.
 (A) It is time that the business closes down.
 (B) It is time for the business to be closed down.
 (C) It is time for closing the business down.
 (D) It is time to be closed down the business.
145. Several trees were uprooted by the tornado.
 (A) The tornado uprooted several trees
 (B) The tornado uproots several trees
 (C) The tornado had uprooted several trees
 (D) The tornado will uproot several trees

Directions : In Questions No. 146 to 155, a part of the sentence is underlined. Below are given alternatives to the underlined part at (A), (B), (C) which may improve the sentence. Choose the correct alternative. In case no improvement is needed your answer is (D). Mark your answer in the Answer Sheet.

146. The powerful desire brought downfall to many rulers.
 (A) intense desire (B) desire for power
 (C) fatal desire (D) No improvement
147. Jack Nolan, whose novel the films are based, will appear in the second part.
 (A) Jack Nolan, on whose novel the films are based, will appear in the second part.
 (B) Jack Nolan, on whose novel the films are based on, will appear in the second part.
 (C) Jack Nolan, whose novel the films based, will appear in the second part.
 (D) No improvement
148. I am not knowing the answer, so I omitted the question.
 (A) had not knowing (B) am not known
 (C) did not know (D) No improvement
149. He has infested a good deal of money in bank stock.
 (A) invested (B) fested
 (C) debted (D) No improvement
150. He had rashes on his skin, so he went to the dermatologist.
 (A) to the specialist
 (B) to the ophthalmologist
 (C) to the paediatrics
 (D) No improvement

151. The prince has been slayed his rival.
 (A) has slew (B) will slew
 (C) has slain (D) No improvement
152. Such discrepancies can be founded in the work culture of other countries.
 (A) could have been founded
 (B) can be found
 (C) could be founded
 (D) No improvement
153. There was no point crying over spilt milk.
 (A) hot milk (B) cold milk
 (C) skimmed milk (D) No improvement
154. India's outlook on the world is composing of these various elements.
 (A) is composed of (B) is composed by
 (C) is composing with (D) No improvement
155. Despite being tried her best to persuade her husband to give up smoking, she could not attain success.
 (A) Despite trying her best
 (B) Despite of her best
 (C) Inspite of being tried her best
 (D) No improvement
- Directions :** In Questions No. 156 to 165, a sentence has been given in Direct/Indirect form. Out of the four alternatives suggested, select the one which best expresses the same sentence in Indirect/Direct form and mark your answer in the Answer Sheet.
156. He said to me, "Will you mind lending me your book today?"
 (A) He told me whether he would mind to lend him his book that day.
 (B) He asked me whether I will mind to lend him my book today.
 (C) He asked me whether I would mind lending him my book that day.
 (D) He said me whether I would mind to lend me his book yesterday.
157. Ashok said, "Subhash had already gone to the bank".
 (A) Ashok said that subhash went already to the bank.
 (B) Ashok said that subhash had been going already to the bank.
 (C) Ashok said that subhash has already went to the bank.
 (D) Ashok said that subhash had already gone to the bank.
158. She told me, "Please send my bills".
 (A) She requested me, please send her bills.
 (B) She requested me to send her bills.
 (C) She requested me that send her bills.
 (D) She requested to send my bills.
159. "Are these books for sale" ? Said the children to the bookseller.
 (A) The children asked to the bookseller if those books are for sale.
 (B) The children asked the bookseller if these books were for sale.
 (C) The children asked the bookseller whether those books were for sale.
 (D) The children asked to the bookseller whether those books were for sale.
160. "Will you carry my briefcase for me please, James" ? Said Richard.
 (A) Richard ordered James to carry my briefcase.
 (B) Richard told James please carry his briefcase.
 (C) Richard proposed to James to carry your briefcase.
 (D) Richard requested James to carry his briefcase.
161. Frank said, "Will you have lunch with Mark" ?
 (A) Frank asked me if I would have lunch with Mark.
 (B) Frank asked if I shall lunch with Mark.
 (C) Frank said whether I have taken lunch with Mark.
 (D) Frank said I could have had lunch with Mark.
162. Father said to Anil, "Avoid bad company".
 (A) Father asked Anil that bad company should be avoided.
 (B) Father suggested to Anil if he could avoid bad company.
 (C) Father advised Anil to avoid bad company.
 (D) Father advised Anil that it is bad company which had to be avoided.
163. She refused to clean her room.
 (A) "I am not going to clean my room", she said.
 (B) "She will not clean her room", she said.
 (C) "I will never be cleaning my room", she said.
 (D) "I will not clean my room today", she exclaimed.
164. She said to her daughter, "Let us go out for a walk".
 (A) She proposed to her daughter that they should go out for a walk.
 (B) She said to her daughter let us go out for a walk.
 (C) She said to her daughter that they go out for a walk.
 (D) She suggested to her daughter that they go out for a walk.
165. I said "Go home".
 (A) I told her to go home.
 (B) I told to her to go home.
 (C) I told her to went home.
 (D) I said her to go home.

Directions : In Question No. 166 to 185 in the following two passages some of the words have been left out. Read the passages carefully and choose the correct answer to each question out of the four alternative and fill in the blanks.

Passage I (Q. No. 166 - 175)

One day at school, Newton was (166) by a (167) boy who was higher up in class than he was himself. The kicking (168) Newton very (169), and he turned on the big boy and gave him a good (170). He also decided to beat him at (171) and this made him start to work (172). After that he (173) at his studies, and so (174) the big boy who kicked Newton did a (175) to the world.

166. (A) played (B) laughed
(C) kicked (D) stolen

167. (A) bigger (B) higher
(C) friendly (D) slow

168. (A) caused (B) felt
(C) happened (D) made

169. (A) happy (B) angry
(C) pleased (D) hungry

170. (A) handshake (B) beating
(C) pat (D) smile

171. (A) cooking (B) sitting
(C) needle work (D) lessons

172. (A) harder (B) slowly
(C) badly (D) quick

173. (A) failed (B) improved
(C) fell (D) climbed

174. (A) until (B) could
(C) sometimes (D) perhaps

175. (A) service (B) repair
(C) job (D) good

Passage II (Q. No. 176 - 185)

People tend to (176) possessions, sometimes without being aware of doing so. Indeed they get a (177) surprise when they find something useful. Those who never have to change house become (178) collectors of clutter. They leave (179) objects in drawers, cupboards and attics for years. They (180) believe that they may need those very things one day. But, collecting as a (181) hobby is quite different as well as advantageous. It (182) relaxation for leisure hours. One does not need to go out (183) search of entertainment. Moreover, one gets to meet (184) collectors. So, ones (185) of friends grows.

176. (A) discard (B) amass
(C) mass (D) lose

177. (A) frustrating (B) disgusting
(C) pleasant (D) stunning

178. (A) happy (B) organised
(C) indiscriminate (D) useless

179. (A) useful (B) unholy
(C) undeserving (D) unwanted

180. (A) earnestly (B) quietly
(C) silently (D) vaguely

181. (A) grave (B) serious
(C) frivolous (D) solemn

182. (A) helps (B) gives
(C) provides (D) promotes

183. (A) for (B) to (C) on (D) in

184. (A) numerous (B) various
(C) big (D) nice

185. (A) quantity (B) area
(C) influence (D) circle

Directions : In Questions No. 186 to 200, you have 3 brief passages with 5 questions following each passage. Read the passages carefully and choose the best answer to each question out of the four alternatives and mark it by blackening the appropriate oval [●] in the Answer Sheet.

Passage - I (Q.No. 186 to 190)

Jagu was the proprietor of a restaurant, and had plenty of customers, yet his house was in a slum, one of those colonies of shacks made out of rags and flattened tin cans that are called zopadpattis in Bombay. There were not enough houses or flats, the rents of even the smallest flats were too high for people like Jagu. These shacks clung to the side of a hill by the sea, to which Mr. Panwallah had taken Hari to see the advancing monsoon. On the boulevard side of the hill, the houses had been large and tall with names like 'Sunshine' and 'Seagull' in which rich people lived.

186. Where did Hari go along with Mr. Panwallah ?
(A) to watch the wide boulevard
(B) to watch the huge buildings
(C) to watch the advancing of the monsoon
(D) to watch the places where rich people lived

187. Why did Jagu live in a slum ?
(A) the rent of flats are very high
(B) he liked living among the poor
(C) he was a miser
(D) he was poor

188. What are zopadpattis ?
(A) houses and flats
(B) slum areas
(C) sea side
(D) colonies of shacks of rags and tin cans

189. Who was Jagu ?
 (A) the waiter of a restaurant
 (B) the owner of a restaurant
 (C) the customer of a restaurant
 (D) the cook of a restaurant

190. What do Sunshine and Seagull signify ?
 (A) names of rich people
 (B) names of locality
 (C) names of roads
 (D) names of houses

Passage II (Q. No. 191 - 195)

No matter how hard we try, how carefully we word what we say or write, things get misunderstood. Our motives may be the best, but motives can't be seen or touched. Only the word is there to be taken and, sometimes, misinterpreted. And if there's one thing we humans are good at, it's misunderstanding. There's a deep insecurity in each of us that makes us so sensitive to attack that we see danger where it doesn't exist. Then, in response to the mirage, we defend ourselves, attack without reason, saddle someone with motives he'd never thought of, and hurt him unjustly.

191. 'Mirage' means :
 (A) a reflection (B) a deflection
 (C) an optical illusion (D) none of the above
192. Motives may be the best but they cannot :
 (A) be understood
 (B) be seen or touched
 (C) be put to a test
 (D) all of the above
193. The author thinks that human beings are very good at :
 (A) talking with each other
 (B) writing to each other
 (C) trying to help one another
 (D) misunderstanding one another
194. In response to the mirage, we often :
 (A) hurt people unjustly
 (B) saddle someone with unrealistic motives
 (C) we attack without reason
 (D) all of the above
195. The author thinks that the harder we try :
 (A) we become more insecure
 (B) we misinterpret things
 (C) we see danger that does not really exist
 (D) things get misunderstood

Passage III (Q. No. 196 - 200)

There were of course utilitarian goods at the fair, but even as such they were not goods of work-a-day-use. If there were clothes they were mostly of silk. If there were caps, they were of embroidered velvet or fine muslin. There were chairs, tables and cupboards. The fair was the purveyor of luxuries for us, luxuries of two kinds—first, to which I have said, were luxurious by virtue of being superfluous to the living of the daily life, and, next things which were luxuries only because they were unobtainable throughout the rest of the year. We literally craved for both, and fortunately got them cheap at the fair. We made no distinction, till the nationalist movement came, between the goods made in the factories of Great Britain and those made by our handicraftsmen. We still judge goods neither by their provenance nor their method of production, but their usefulness to us—the buyers. We paid equal attention to hand made and machine made goods but personally speaking, I rather neglected one row of handicrafts which I would like to see again. It was the row of our native cabinet makers who made the chests of which I have spoken in the rich golden timber of the jack fruit tree.

196. The author regrets neglecting _____.
 (A) hand made goods
 (B) chests made by native artisans
 (C) the golden timber of the jackfruit tree
 (D) goods made in British factories
197. The types of goods available at the fair were _____.
 (A) goods of work-a-day-use
 (B) obtainable throughout the year
 (C) only utilitarian goods
 (D) utilitarian and luxury items
198. The word 'Provenance' means _____.
 (A) place of manufacture (B) place of origin
 (C) target market areas (D) proof of quality
199. As the national movement began, people started distinguishing between _____.
 (A) utilitarian and luxury items
 (B) hand made and machine made goods
 (C) goods made in British factories and domestic craftsmen
 (D) obtainable items and rare items
200. The buyer judged things by _____.
 (A) their place of origin
 (B) their method of production
 (C) their usefulness to the buyer
 (D) their cost

- o O o -