





GATE 2014: General Instructions during Examination


1. Total duration of the GATE examination is **180** minutes.
2. The clock will be set at the server. The countdown timer at the top right corner of screen will display the remaining time available for you to complete the examination. When the timer reaches zero, the examination will end by itself. You need not terminate the examination or submit your paper.
3. Any useful data required for your paper can be viewed by clicking on the **Useful Common Data** button that appears on the screen.
4. Use the scribble pad provided to you for any rough work. Submit the scribble pad at the end of the examination.
5. You are allowed to use a non-programmable type calculator, however, sharing of calculators is not allowed.
6. The Question Palette displayed on the right side of screen will show the status of each question using one of the following symbols:

 You have not visited the question yet.

 You have not answered the question.

 You have answered the question.

 You have NOT answered the question, but have marked the question for review.

 You have answered the question, but marked it for review.

The **Marked for Review** status for a question simply indicates that you would like to look at that question again. *If a question is answered, but marked for review, then the answer will be considered for evaluation unless the status is modified by the candidate.*

Navigating to a Question :

7. To answer a question, do the following:
 - a. Click on the question number in the Question Palette to go to that question directly.
 - b. Select an answer for a multiple choice type question by clicking on the bubble placed before the 4 choices, namely A, B, C and D. Use the virtual numeric keypad to enter a number as answer for a numerical type question.
 - c. Click on **Save & Next** to save your answer for the current question and then go to the next question.
 - d. Click on **Mark for Review & Next** to save your answer for the current question and also mark it for review, and then go to the next question.

Caution: Note that your answer for the current question will not be saved, if you navigate to another question directly by clicking on a question number without saving the answer to the previous question.

You can view all the questions by clicking on the **Question Paper** button. This feature is provided, so that if you want you can just see the entire question paper at a glance.

Answering a Question :

8. Procedure for answering a multiple choice (MCQ) type question:
 - a. Choose one answer from the 4 options (A,B,C,D) given below the question, click on the bubble placed before the chosen option.
 - b. To deselect your chosen answer, click on the bubble of the chosen option again or click on the **Clear Response** button.
 - c. To change your chosen answer, click on the bubble of another option.
 - d. To save your answer, you MUST click on the **Save & Next** button.
9. Procedure for answering a numerical answer type question:
 - a. To enter a number as your answer, use the virtual numerical keypad.
 - b. A fraction (e.g. -0.3 or -.3) can be entered as an answer with or without '0' before the decimal point. As many as four decimal points, e.g. 12.5435 or 0.003 or -932.6711 or 12.82 can be entered.
 - c. To clear your answer, click on the **Clear Response** button.
 - d. To save your answer, you MUST click on the **Save & Next** button
10. To mark a question for review, click on the **Mark for Review & Next** button. *If an answer is selected (for MCQ) or entered (for numerical answer type) for a question that is **Marked for Review**, that answer will be considered in the evaluation unless the status is modified by the candidate.*
11. To change your answer to a question that has already been answered, first select that question for answering and then follow the procedure for answering that type of question.
12. Note that **ONLY** Questions for which answers are *saved* or *marked for review after answering* will be considered for evaluation.

Choosing a Section :

13. Sections in this question paper are displayed on the top bar of the screen. Questions in a Section can be viewed by clicking on the name of that Section. The Section you are currently viewing will be highlighted.
14. A checkbox is displayed for every optional Section, if any, in the Question Paper. To select the optional Section for answering, click on the checkbox for that Section.
15. If the checkbox for an optional Section is not selected, the **Save & Next** button and the **Mark for Review & Next** button will NOT be enabled for that Section. You will

only be able to see questions in this Section, but you will not be able to answer questions in the Section.

16. After clicking the **Save & Next** button for the last question in a Section, you will automatically be taken to the first question of the next Section in sequence.
17. You can move the mouse cursor over the name of a Section to view the answering status for that Section.

Changing the Optional Section :

18. After answering the chosen optional Section, partially or completely, you can change the optional Section by selecting the checkbox for a new Section that you want to attempt. A warning message will appear along with a table showing the number of questions answered in each of the previously chosen optional Sections and a checkbox against each of these Sections. Click on a checkbox against a Section that you want to reset and then click on the **RESET** button. Note that **RESETTING** a Section will **DELETE** all the answers for questions in that Section. Hence, if you think that you may want to select this Section again later, you will have to note down your answers for questions in that Section. If you do not want to reset the Section and want to continue answering the previously chosen optional Section, then click on the **BACK** button.
19. If you deselect the checkbox for an optional Section in the top bar, the following warning message will appear: "Deselecting the checkbox will **DELETE** all the answers for questions in this Section. Do you want to deselect this Section?" If you want to deselect, click on the **RESET** button. If you do not want to deselect, click on the **BACK** button.
20. You can shuffle between different Sections or change the optional Sections any number of times.

GATE 2014 Examination

EC: Electronics & Communications Engineering

Duration: 180 minutes

Maximum Marks: 100

Read the following instructions carefully.

1. To login, enter your Registration Number and password provided to you. Kindly go through the various symbols used in the test and understand their meaning before you start the examination.
2. Once you login and after the start of the examination, you can view all the questions in the question paper, by clicking on the **View All Questions** button in the screen.
3. This question paper consists of **2 sections**, General Aptitude (GA) for **15 marks** and the subject specific GATE paper for **85 marks**. Both these sections are compulsory.
The GA section consists of **10** questions. Question numbers 1 to 5 are of 1-mark each, while question numbers 6 to 10 are of 2-mark each.
The subject specific GATE paper section consists of **55** questions, out of which question numbers 1 to 25 are of 1-mark each, while question numbers 26 to 55 are of 2-mark each.
4. Depending upon the GATE paper, there may be useful common data that may be required for answering the questions. If the paper has such useful data, the same can be viewed by clicking on the **Useful Common Data** button that appears at the top, right hand side of the screen.
5. The computer allotted to you at the examination center runs specialized software that permits only one answer to be selected for multiple-choice questions using a mouse and to enter a suitable number for the numerical answer type questions using the virtual keyboard and mouse.
6. Your answers shall be updated and saved on a server periodically and also at the end of the examination. The examination will **stop automatically** at the end of **180 minutes**.
7. In each paper a candidate can answer a total of 65 questions carrying 100 marks.
8. The question paper may consist of questions of **multiple choice type (MCQ)** and **numerical answer type**.
9. Multiple choice type questions will have four choices against A, B, C, D, out of which only **ONE** is the correct answer. The candidate has to choose the correct answer by clicking on the bubble (○) placed before the choice.
10. For numerical answer type questions, each question will have a numerical answer and there will not be any choices. **For these questions, the answer should be entered** by using the virtual keyboard that appears on the monitor and the mouse.
11. All questions that are not attempted will result in zero marks. However, wrong answers for multiple choice type questions (MCQ) will result in **NEGATIVE** marks. For all MCQ questions a wrong answer will result in deduction of $\frac{1}{3}$ marks for a 1-mark question and $\frac{2}{3}$ marks for a 2-mark question.
12. There is **NO NEGATIVE MARKING** for questions of **NUMERICAL ANSWER TYPE**.
13. Non-programmable type Calculator is allowed. Charts, graph sheets, and mathematical tables are **NOT** allowed in the Examination Hall. You must use the Scribble pad provided to you at the examination centre for all your rough work. The Scribble Pad has to be returned at the end of the examination.

Declaration by the candidate:

“I have read and understood all the above instructions. I have also read and understood clearly the instructions given on the admit card and shall follow the same. I also understand that in case I am found to violate any of these instructions, my candidature is liable to be cancelled. I also confirm that at the start of the examination all the computer hardware allotted to me are in proper working condition”.

Q. 1 – Q. 5 carry one mark each.

- Q.1 Which of the following options is the closest in meaning to the word underlined in the sentence below?

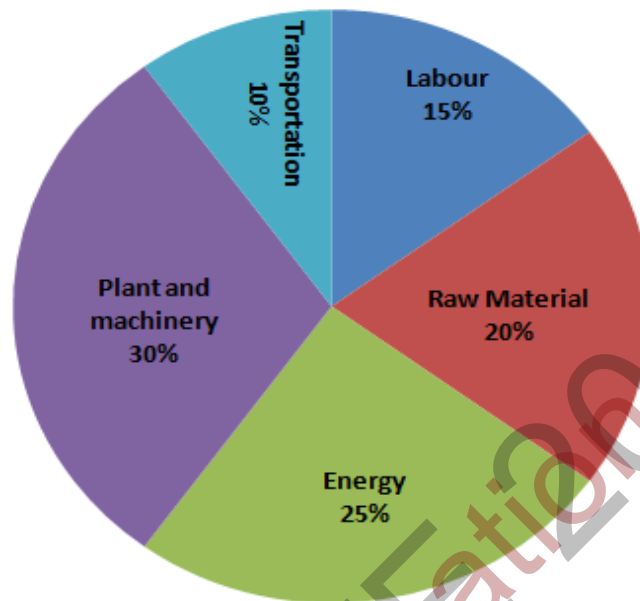
In a democracy, everybody has the freedom to disagree with the government.

- (A) dissent (B) descent (C) decent (D) decadent
- Q.2 After the discussion, Tom said to me, 'Please revert!'. He expects me to _____.
- (A) retract (B) get back to him (C) move in reverse (D) retreat
- Q.3 While receiving the award, the scientist said, "I feel vindicated". Which of the following is closest in meaning to the word 'vindicated'?
- (A) punished (B) substantiated (C) appreciated (D) chastened
- Q.4 Let $f(x, y) = x^n y^m = P$. If x is doubled and y is halved, the new value of f is
- (A) $2^{n-m}P$ (B) $2^{m-n}P$ (C) $2(n-m)P$ (D) $2(m-n)P$
- Q.5 In a sequence of 12 consecutive odd numbers, the sum of the first 5 numbers is 425. What is the sum of the last 5 numbers in the sequence?

Q. 6 – Q. 10 carry two marks each.

- Q.6 Find the next term in the sequence: 13M, 17Q, 19S, ____
- (A) 21W (B) 21V (C) 23W (D) 23V
- Q.7 If 'KCLFTSB' stands for 'best of luck' and 'SHSWDG' stands for 'good wishes', which of the following indicates 'ace the exam'?
- (A) MCHTX (B) MXHTC (C) XMHCT (D) XMHTC
- Q.8 Industrial consumption of power doubled from 2000-2001 to 2010-2011. Find the annual rate of increase in percent assuming it to be uniform over the years.
- (A) 5.6 (B) 7.2 (C) 10.0 (D) 12.2

- Q.9 A firm producing air purifiers sold 200 units in 2012. The following pie chart presents the share of raw material, labour, energy, plant & machinery, and transportation costs in the total manufacturing cost of the firm in 2012. The expenditure on labour in 2012 is Rs. 4,50,000. In 2013, the raw material expenses increased by 30% and all other expenses increased by 20%. What is the percentage increase in total cost for the company in 2013?



- Q.10 A five digit number is formed using the digits 1,3,5,7 and 9 without repeating any of them. What is the sum of all such possible five digit numbers?
- (A) 6666660 (B) 6666600 (C) 6666666 (D) 6666606

END OF THE QUESTION PAPER

Q. 1 – Q. 25 carry one mark each.

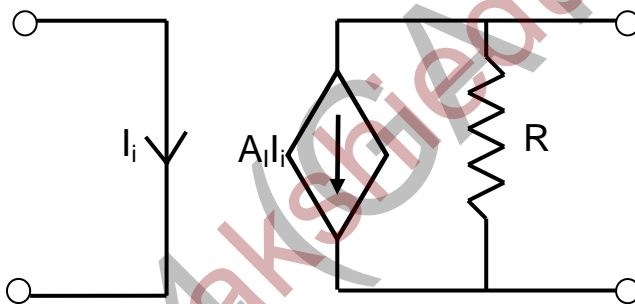
- Q.1 The series $\sum_{n=0}^{\infty} \frac{1}{n!}$ converges to
 (A) $2 \ln 2$ (B) $\sqrt{2}$ (C) 2 (D) e
- Q.2 The magnitude of the gradient for the function $f(x, y, z) = x^2 + 3y^2 + z^3$ at the point (1,1,1) is _____.
- Q.3 Let X be a zero mean unit variance Gaussian random variable. $E[|X|]$ is equal to _____

- Q.4 If a and b are constants, the most general solution of the differential equation

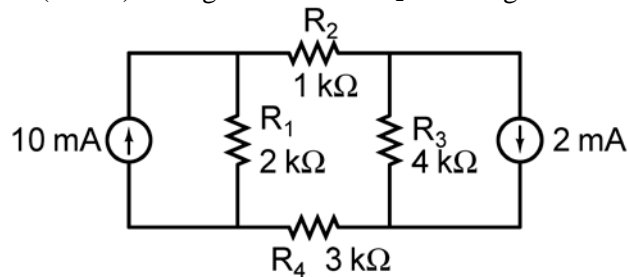
$$\frac{d^2x}{dt^2} + 2\frac{dx}{dt} + x = 0 \text{ is}$$

- (A) ae^{-t} (B) $ae^{-t} + bte^{-t}$ (C) $ae^t + bte^{-t}$ (D) ae^{-2t}
- Q.5 The directional derivative of $f(x, y) = \frac{xy}{\sqrt{2}}(x + y)$ at (1, 1) in the direction of the unit vector at an angle of $\frac{\pi}{4}$ with y-axis, is given by _____.

- Q.6 The circuit shown in the figure represents a

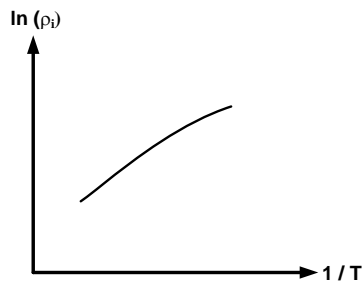


- (A) voltage controlled voltage source
 (B) voltage controlled current source
 (C) current controlled current source
 (D) current controlled voltage source
- Q.7 The magnitude of current (in mA) through the resistor R_2 in the figure shown is _____.



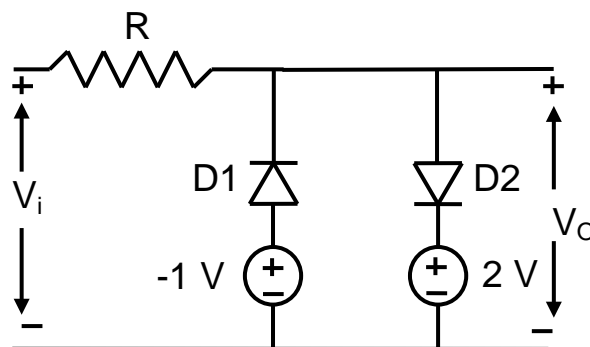
- Q.8 At $T = 300\text{ K}$, the band gap and the intrinsic carrier concentration of GaAs are 1.42 eV and 10^6 cm^{-3} , respectively. In order to generate electron hole pairs in GaAs, which one of the wavelength (λ_c) ranges of incident radiation, is most suitable? (Given that: Plank's constant is $6.62 \times 10^{-34}\text{ J-s}$, velocity of light is $3 \times 10^{10}\text{ cm/s}$ and charge of electron is $1.6 \times 10^{-19}\text{ C}$)
- (A) $0.42\ \mu\text{m} < \lambda_c < 0.87\ \mu\text{m}$ (B) $0.87\ \mu\text{m} < \lambda_c < 1.42\ \mu\text{m}$
 (C) $1.42\ \mu\text{m} < \lambda_c < 1.62\ \mu\text{m}$ (D) $1.62\ \mu\text{m} < \lambda_c < 6.62\ \mu\text{m}$

- Q.9 In the figure, $\ln(\rho_i)$ is plotted as a function of $1/T$, where ρ_i is the intrinsic resistivity of silicon, T is the temperature, and the plot is almost linear.



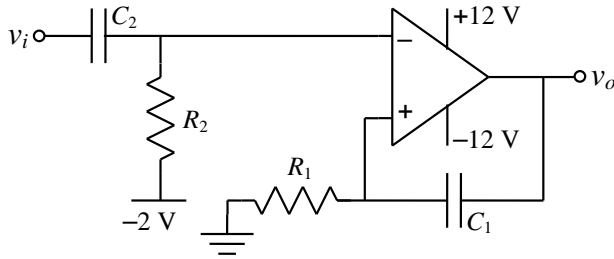
The slope of the line can be used to estimate

- (A) band gap energy of silicon (E_g)
 (B) sum of electron and hole mobility in silicon ($\mu_n + \mu_p$)
 (C) reciprocal of the sum of electron and hole mobility in silicon ($\mu_n + \mu_p$)⁻¹
 (D) intrinsic carrier concentration of silicon (n_i)
- Q.10 The cut-off wavelength (in μm) of light that can be used for intrinsic excitation of a semiconductor material of bandgap $E_g = 1.1\text{ eV}$ is _____
- Q.11 If the emitter resistance in a common-emitter voltage amplifier is not bypassed, it will
- (A) reduce both the voltage gain and the input impedance
 (B) reduce the voltage gain and increase the input impedance
 (C) increase the voltage gain and reduce the input impedance
 (D) increase both the voltage gain and the input impedance
- Q.12 Two silicon diodes, with a forward voltage drop of 0.7 V , are used in the circuit shown in the figure. The range of input voltage V_i for which the output voltage $V_o = V_i$, is



- (A) $-0.3\text{ V} < V_i < 1.3\text{ V}$
 (B) $-0.3\text{ V} < V_i < 2\text{ V}$
 (C) $-1.0\text{ V} < V_i < 2.0\text{ V}$
 (D) $-1.7\text{ V} < V_i < 2.7\text{ V}$

Q.13 The circuit shown represents

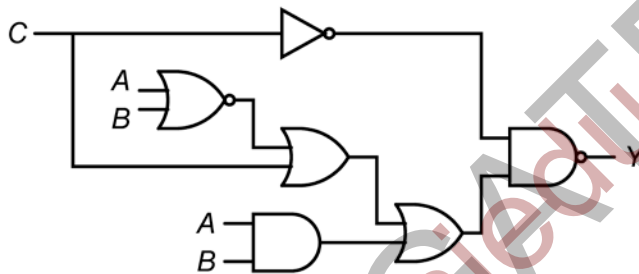


- (A) a bandpass filter
- (B) a voltage controlled oscillator
- (C) an amplitude modulator
- (D) a monostable multivibrator

Q.14 For a given sample-and-hold circuit, if the value of the hold capacitor is increased, then

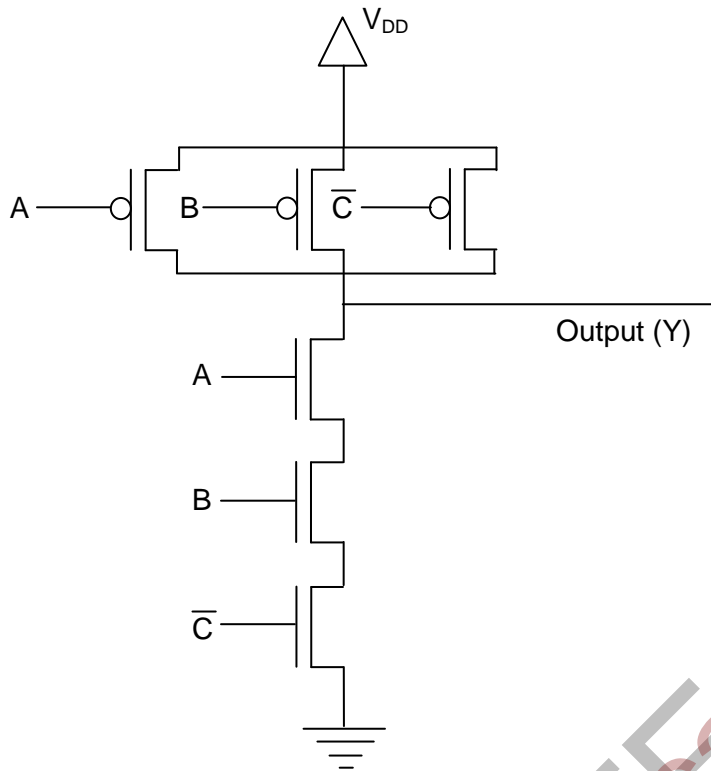
- (A) droop rate decreases and acquisition time decreases
- (B) droop rate decreases and acquisition time increases
- (C) droop rate increases and acquisition time decreases
- (D) droop rate increases and acquisition time increases

Q.15 In the circuit shown in the figure, if $C = 0$, the expression for Y is



- (A) $Y = A\bar{B} + \bar{A}B$
- (B) $Y = A + B$
- (C) $Y = \bar{A} + \bar{B}$
- (D) $Y = AB$

Q.16 The output (Y) of the circuit shown in the figure is



- (A) $\bar{A} + \bar{B} + C$
- (B) $A + \bar{B} \cdot \bar{C} + A \cdot \bar{C}$
- (C) $\bar{A} + B + \bar{C}$
- (D) $A \cdot B \cdot \bar{C}$

Q.17 A Fourier transform pair is given by

$$\left(\frac{2}{3}\right)^n u[n + 3] \stackrel{FT}{\Leftrightarrow} \frac{A e^{-j6\pi f}}{1 - \left(\frac{2}{3}\right) e^{-j2\pi f}}$$

where $u[n]$ denotes the unit step sequence. The values of A is _____.

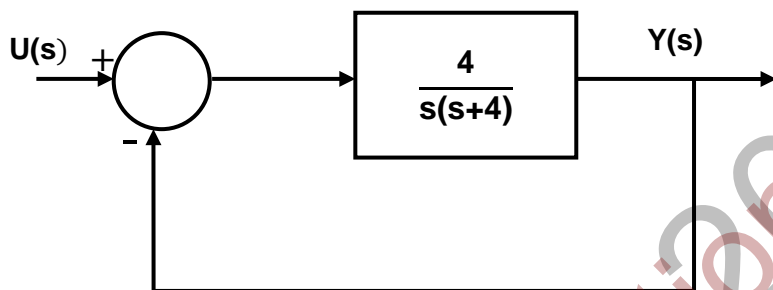
Q.18 A real-valued signal $x(t)$ limited to the frequency band $|f| \leq \frac{W}{2}$ is passed through a linear time invariant system whose frequency response is

$$H(f) = \begin{cases} e^{-j4\pi f}, & |f| \leq \frac{W}{2} \\ 0, & |f| > \frac{W}{2} \end{cases}$$

The output of the system is

- (A) $x(t + 4)$
- (B) $x(t - 4)$
- (C) $x(t + 2)$
- (D) $x(t - 2)$

- Q.19 The sequence $x[n] = 0.5^n u[n]$, where $u[n]$ is the unit step sequence, is convolved with itself to obtain $y[n]$. Then $\sum_{n=-\infty}^{+\infty} y[n]$ is _____.
- Q.20 In a Bode magnitude plot, which one of the following slopes would be exhibited at high frequencies by a 4th order all-pole system?
 (A) – 80 dB/decade (B) – 40 dB/decade (C) +40 dB/decade (D) +80 dB/decade
- Q.21 For the second order closed-loop system shown in the figure, the natural frequency (in rad/s) is



- (A) 16 (B) 4 (C) 2 (D) 1
- Q.22 If calls arrive at a telephone exchange such that the time of arrival of any call is independent of the time of arrival of earlier or future calls, the probability distribution function of the total number of calls in a fixed time interval will be
 (A) Poisson (B) Gaussian (C) Exponential (D) Gamma
- Q.23 In a double side-band (DSB) full carrier AM transmission system, if the modulation index is doubled, then the ratio of total sideband power to the carrier power increases by a factor of _____.
- Q.24 For an antenna radiating in free space, the electric field at a distance of 1 km is found to be 12 mV/m. Given that intrinsic impedance of the free space is $120\pi \Omega$, the magnitude of average power density due to this antenna at a distance of 2 km from the antenna (in nW/m^2) is _____.
- Q.25 Match column A with column B.

Column A

1. Point electromagnetic source
2. Dish antenna
3. Yagi-Uda antenna

Column B

- P. Highly directional
- Q. End fire
- R. Isotropic

- | | | | | | | | |
|-----|-------------------------|-----|-------------------------|-----|-------------------------|-----|-------------------------|
| (A) | 1 → P
2 → Q
3 → R | (B) | 1 → R
2 → P
3 → Q | (C) | 1 → Q
2 → P
3 → R | (D) | 1 → R
2 → Q
3 → P |
|-----|-------------------------|-----|-------------------------|-----|-------------------------|-----|-------------------------|

Q. 26 – Q. 55 carry two marks each.

Q.26 With initial values $y(0) = y'(0) = 1$, the solution of the differential equation

$$\frac{d^2y}{dx^2} + 4\frac{dy}{dx} + 4y = 0$$

at $x = 1$ is _____.

Q.27 Parcels from sender S to receiver R pass sequentially through two post-offices. Each post-office has a probability $\frac{1}{5}$ of losing an incoming parcel, independently of all other parcels. Given that a parcel is lost, the probability that it was lost by the second post-office is _____.

Q.28 The unilateral Laplace transform of $f(t)$ is $\frac{1}{s^2+s+1}$. Which one of the following is the unilateral Laplace transform of $g(t) = t \cdot f(t)$?

(A) $\frac{-s}{(s^2+s+1)^2}$

(B) $\frac{-(2s+1)}{(s^2+s+1)^2}$

(C) $\frac{s}{(s^2+s+1)^2}$

(D) $\frac{2s+1}{(s^2+s+1)^2}$

Q.29 For a right angled triangle, if the sum of the lengths of the hypotenuse and a side is kept constant, in order to have maximum area of the triangle, the angle between the hypotenuse and the side is

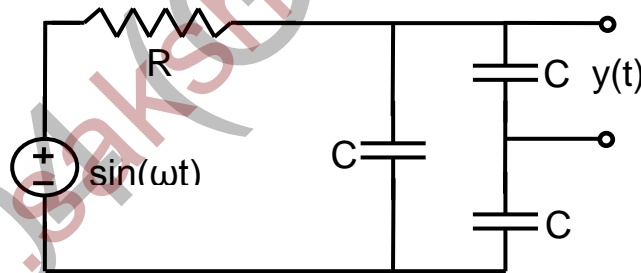
(A) 12°

(B) 36°

(C) 60°

(D) 45°

Q.30 The steady state output of the circuit shown in the figure is given by $y(t) = A(\omega) \sin(\omega t + \phi(\omega))$. If the amplitude $|A(\omega)| = 0.25$, then the frequency ω is



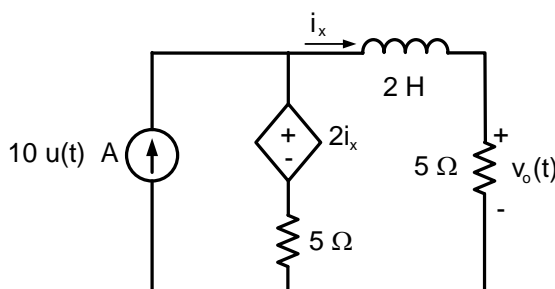
(A) $\frac{1}{\sqrt{3}RC}$

(B) $\frac{2}{\sqrt{3}RC}$

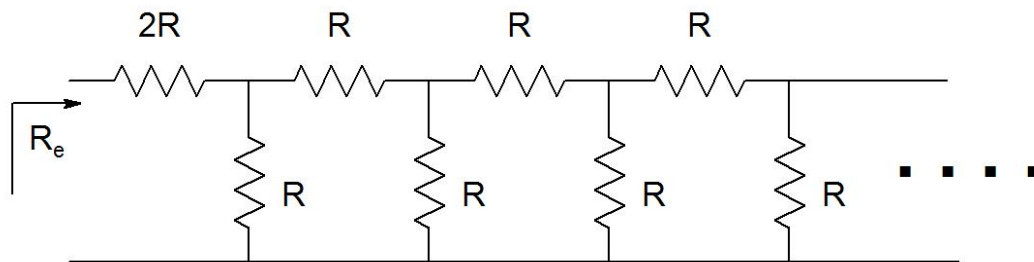
(C) $\frac{1}{RC}$

(D) $\frac{2}{RC}$

Q.31 In the circuit shown in the figure, the value of $v_0(t)$ (in Volts) for $t \rightarrow \infty$ is _____.

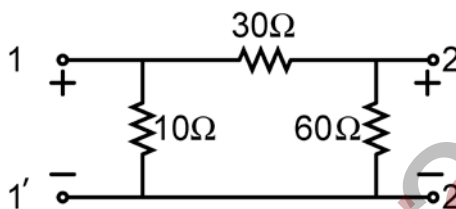


Q.32 The equivalent resistance in the infinite ladder network shown in the figure, is R_e .



The value of R_e/R is _____

Q.33 For the two-port network shown in the figure, the impedance (Z) matrix (in Ω) is

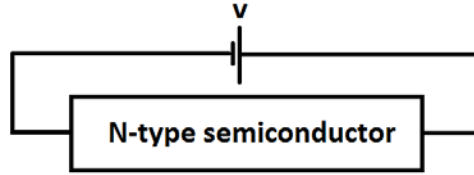


- (A) $\begin{bmatrix} 6 & 24 \\ 42 & 9 \end{bmatrix}$ (B) $\begin{bmatrix} 9 & 8 \\ 8 & 24 \end{bmatrix}$ (C) $\begin{bmatrix} 9 & 6 \\ 6 & 24 \end{bmatrix}$ (D) $\begin{bmatrix} 42 & 6 \\ 6 & 60 \end{bmatrix}$

Q.34 Consider a silicon sample doped with $N_D = 1 \times 10^{15}/\text{cm}^3$ donor atoms. Assume that the intrinsic carrier concentration $n_i = 1.5 \times 10^{10}/\text{cm}^3$. If the sample is additionally doped with $N_A = 1 \times 10^{18}/\text{cm}^3$ acceptor atoms, the approximate number of electrons/ cm^3 in the sample, at $T=300$ K, will be _____.

Q.35 Consider two BJTs biased at the same collector current with area $A_1 = 0.2 \mu\text{m} \times 0.2 \mu\text{m}$ and $A_2 = 300 \mu\text{m} \times 300 \mu\text{m}$. Assuming that all other device parameters are identical, $kT/q = 26$ mV, the intrinsic carrier concentration is $1 \times 10^{10} \text{ cm}^{-3}$, and $q = 1.6 \times 10^{-19} \text{ C}$, the difference between the base-emitter voltages (in mV) of the two BJTs (i.e., $V_{BE1} - V_{BE2}$) is _____.

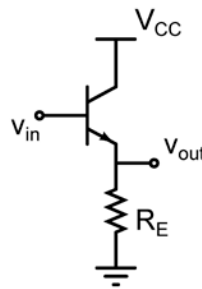
Q.36 An N-type semiconductor having uniform doping is biased as shown in the figure.



If E_C is the lowest energy level of the conduction band, E_V is the highest energy level of the valance band and E_F is the Fermi level, which one of the following represents the energy band diagram for the biased N-type semiconductor?

- (A)
- (B)
- (C)
- (D)

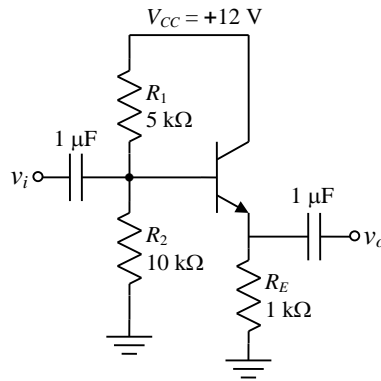
Q.37 Consider the common-collector amplifier in the figure (bias circuitry ensures that the transistor operates in forward active region, but has been omitted for simplicity). Let I_C be the collector current, V_{BE} be the base-emitter voltage and V_T be the thermal voltage. Also, g_m and r_o are the small-signal transconductance and output resistance of the transistor, respectively. Which one of the following conditions ensures a nearly constant small signal voltage gain for a wide range of values of R_E ?



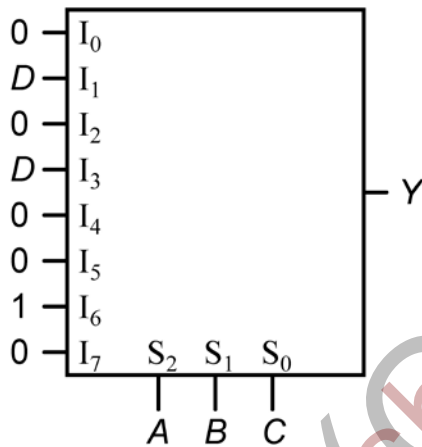
- (A) $g_m R_E \ll 1$
- (B) $I_C R_E \gg V_T$
- (C) $g_m r_o \gg 1$
- (D) $V_{BE} \gg V_T$

Q.38 A BJT in a common-base configuration is used to amplify a signal received by a 50Ω antenna. Assume $kT/q = 25 \text{ mV}$. The value of the collector bias current (in mA) required to match the input impedance of the amplifier to the impedance of the antenna is _____.

Q.39 For the common collector amplifier shown in the figure, the BJT has high β , negligible $V_{CE(sat)}$, and $V_{BE} = 0.7 \text{ V}$. The maximum undistorted peak-to-peak output voltage v_o (in Volts) is _____.

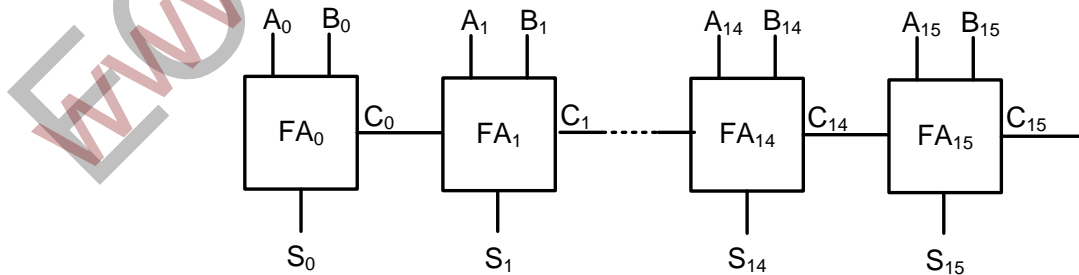


Q.40 An 8-to-1 multiplexer is used to implement a logical function Y as shown in the figure. The output Y is given by



- (A) $Y = A \bar{B} C + A \bar{C} D$ (B) $Y = \bar{A} B C + A \bar{B} D$
 (C) $Y = A B \bar{C} + \bar{A} C D$ (D) $Y = \bar{A} \bar{B} D + A \bar{B} C$

Q.41 A 16-bit ripple carry adder is realized using 16 identical full adders (FA) as shown in the figure. The carry-propagation delay of each FA is 12 ns and the sum-propagation delay of each FA is 15 ns. The worst case delay (in ns) of this 16-bit adder will be _____.



Q.42 An 8085 microprocessor executes “STA 1234H” with starting address location 1FFEh (STA copies the contents of the Accumulator to the 16-bit address location). While the instruction is fetched and executed, the sequence of values written at the address pins $A_{15} - A_8$ is

- (A) 1FH, 1FH, 20H, 12H (B) 1FH, FEH, 1FH, FFH, 12H
 (C) 1FH, 1FH, 12H, 12H (D) 1FH, 1FH, 12H, 20H, 12H

- Q.43 A stable linear time invariant (LTI) system has a transfer function $H(s) = \frac{1}{s^2 + s - 6}$. To make this system causal it needs to be cascaded with another LTI system having a transfer function $H_1(s)$. A correct choice for $H_1(s)$ among the following options is

(A) $s + 3$ (B) $s - 2$ (C) $s - 6$ (D) $s + 1$

- Q.44 A causal LTI system has zero initial conditions and impulse response $h(t)$. Its input $x(t)$ and output $y(t)$ are related through the linear constant-coefficient differential equation

$$\frac{d^2 y(t)}{dt^2} + \alpha \frac{dy(t)}{dt} + \alpha^2 y(t) = x(t).$$

Let another signal $g(t)$ be defined as

$$g(t) = \alpha^2 \int_0^t h(\tau) d\tau + \frac{dh(t)}{dt} + \alpha h(t).$$

If $G(s)$ is the Laplace transform of $g(t)$, then the number of poles of $G(s)$ is _____.

- Q.45 The N -point DFT X of a sequence $x[n]$, $0 \leq n \leq N - 1$ is given by

$$X[k] = \frac{1}{\sqrt{N}} \sum_{n=0}^{N-1} x[n] e^{-j \frac{2\pi}{N} nk}, \quad 0 \leq k \leq N - 1.$$

Denote this relation as $X = DFT(x)$. For $N = 4$, which one of the following sequences satisfies $DFT(DFT(x)) = x$?

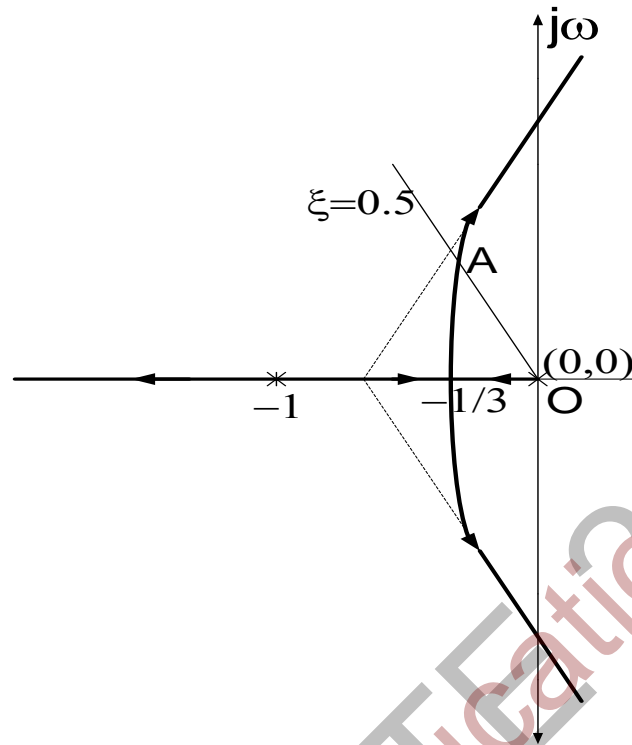
(A) $x = [1 \ 2 \ 3 \ 4]$ (B) $x = [1 \ 2 \ 3 \ 2]$
 (C) $x = [1 \ 3 \ 2 \ 2]$ (D) $x = [1 \ 2 \ 2 \ 3]$

- Q.46 The state transition matrix $\phi(t)$ of a system $\begin{bmatrix} \dot{x}_1 \\ \dot{x}_2 \end{bmatrix} = \begin{bmatrix} 0 & 1 \\ 0 & 0 \end{bmatrix} \begin{bmatrix} x_1 \\ x_2 \end{bmatrix}$ is

(A) $\begin{bmatrix} t & 1 \\ 1 & 0 \end{bmatrix}$ (B) $\begin{bmatrix} 1 & 0 \\ t & 1 \end{bmatrix}$ (C) $\begin{bmatrix} 0 & 1 \\ 1 & t \end{bmatrix}$ (D) $\begin{bmatrix} 1 & t \\ 0 & 1 \end{bmatrix}$

- Q.47 Consider a transfer function $G_p(s) = \frac{ps^2 + 3ps - 2}{s^2 + (3+p)s + (2-p)}$ with p a positive real parameter. The maximum value of p until which G_p remains stable is _____.

Q.48 The characteristic equation of a unity negative feedback system is $1 + KG(s) = 0$. The open loop transfer function $G(s)$ has one pole at 0 and two poles at -1. The root locus of the system for varying K is shown in the figure.



The constant damping ratio line, for $\xi=0.5$, intersects the root locus at point A. The distance from the origin to point A is given as 0.5. The value of K at point A is _____ .

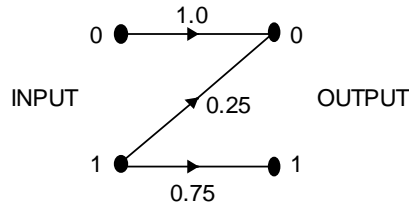
Q.49 Consider a communication scheme where the binary valued signal X satisfies $P\{X = +1\} = 0.75$ and $P\{X = -1\} = 0.25$. The received signal $Y = X + Z$, where Z is a Gaussian random variable with zero mean and variance σ^2 . The received signal Y is fed to the threshold detector. The output of the threshold detector \hat{X} is:

$$\hat{X} = \begin{cases} +1, & Y > \tau \\ -1, & Y \leq \tau. \end{cases}$$

To achieve a minimum probability of error $P\{\hat{X} \neq X\}$, the threshold τ should be

- (A) strictly positive
- (B) zero
- (C) strictly negative
- (D) strictly positive, zero, or strictly negative depending on the nonzero value of σ^2

Q.50 Consider the Z-channel given in the figure. The input is 0 or 1 with equal probability.



If the output is 0, the probability that the input is also 0 equals _____

Q.51 An M-level PSK modulation scheme is used to transmit independent binary digits over a band-pass channel with bandwidth 100 kHz. The bit rate is 200 kbps and the system characteristic is a raised-cosine spectrum with 100% excess bandwidth. The minimum value of M is _____.

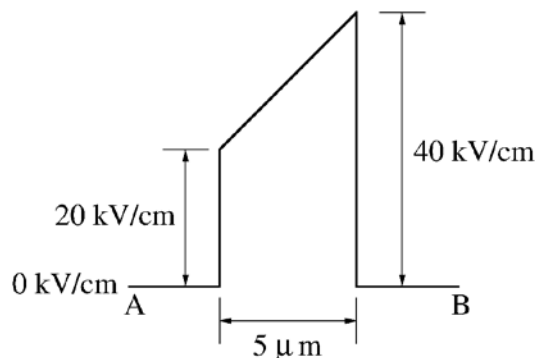
Q.52 Consider a discrete-time channel $Y = X + Z$, where the additive noise Z is signal-dependent. In particular, given the transmitted symbol $X \in \{-a, +a\}$ at any instant, the noise sample Z is chosen independently from a Gaussian distribution with mean βX and unit variance. Assume a threshold detector with zero threshold at the receiver.

When $\beta = 0$, the BER was found to be $Q(a) = 1 \times 10^{-8}$.
 ($Q(v) = \frac{1}{\sqrt{2\pi}} \int_v^\infty e^{-u^2/2} du$, and for $v > 1$, use $Q(v) \approx e^{-v^2/2}$)

When $\beta = -0.3$, the BER is closest to

- (A) 10^{-7}
- (B) 10^{-6}
- (C) 10^{-4}
- (D) 10^{-2}

Q.53 The electric field (assumed to be one-dimensional) between two points A and B is shown. Let ψ_A and ψ_B be the electrostatic potentials at A and B, respectively. The value of $\psi_B - \psi_A$ in Volts is _____.



Q.54 Given $\vec{F} = z\hat{a}_x + x\hat{a}_y + y\hat{a}_z$. If S represents the portion of the sphere $x^2 + y^2 + z^2 = 1$ for $z \geq 0$, then $\int_S \nabla \times \vec{F} \cdot \vec{ds}$ is _____.

Q.55 If $\vec{E} = -(2y^3 - 3yz^2)\hat{x} - (6xy^2 - 3xz^2)\hat{y} + (6xyz)\hat{z}$ is the electric field in a source free region, a valid expression for the electrostatic potential is

- (A) $xy^3 - yz^2$ (B) $2xy^3 - xyz^2$ (C) $y^3 + xyz^2$ (D) $2xy^3 - 3xyz^2$

END OF THE QUESTION PAPER

www.sakshieducation.com